



32 Fawdon Street, SAFETY BAY, WA 6169

In a Word: Nostalgic

Where timeless character meets generous living spaces, soaring ornate ceilings and rich timber floors, this beautifully restored and modernised residence offers the perfect blend of classic charm and contemporary comfort. Designed to create lasting memories, this home evokes a sense of nostalgia - reminiscent of carefree childhood summers, open spaces, and days spent enjoying our stunning coastline. Perhaps you've holidayed in a home like this before, where summers felt endless - now is your opportunity to make that feeling your everyday reality.

Features Include:

- Quintessential character and charm showcased throughout
- Expansive family room with adjoining dining area
- Generously sized bedrooms
- Character-inspired kitchen with stone island benchtop
- Ornate gas fireplace with decorative mantle
- Beautiful Jarrah timber floorboards

The particulars contained herein are supplied for information only and shall not be taken as a representation in any respect on the part of the vendor or its agent. Interested parties should contact the nominated person or office for full and current details.

TYPE: For Sale

INTERNET ID: 300P196923

SALE DETAILS

Offers From \$899,000

CONTACT DETAILS

**Elders Real Estate
Rockingham & Baldivis**

8/2-6 Council Ave
Rockingham, WA
08 9591 4999

Shaun Groves
0414461976

- Separate laundry and WC for added convenience
- Additional games room with potential to convert into a third bedroom
- Ducted cooling (Installed 1 1/2 years ago)

Outside Features Include:

- Substantial 817m² block
- Newly enclosed alfresco area, ideal for year-round entertaining
- Side access
- Huge powered workshop with extensive undercover hardstand
- Bore and reticulation system
- Welcoming front porch overlooking established gardens and mature trees
- Beautifully maintained outdoor spaces

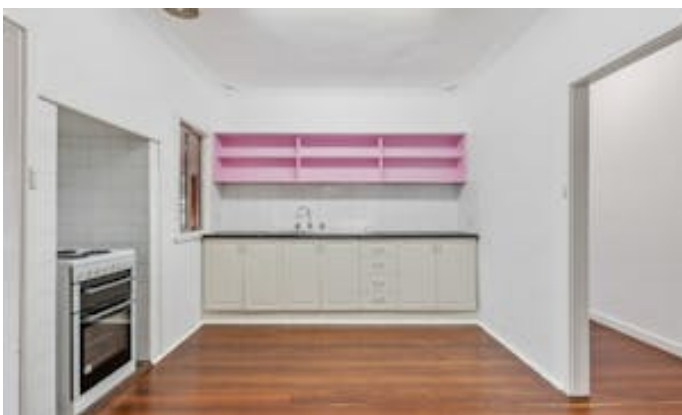
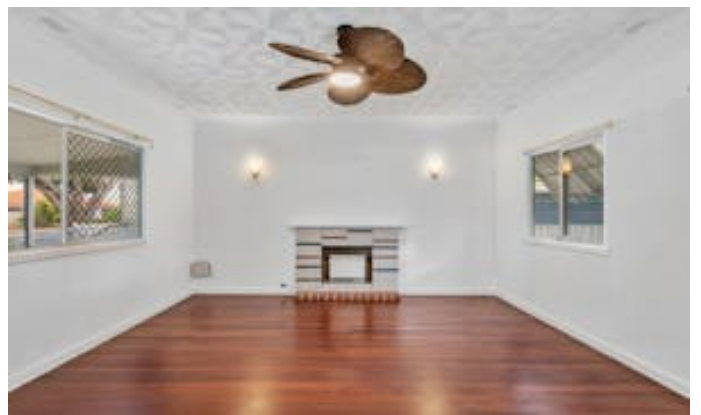
Location:

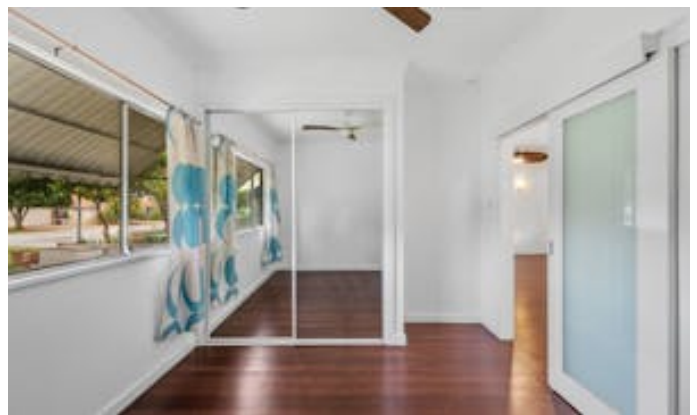
- Approx. 900m* to the beach (Google Maps)
- Approx. 1.8km* to Rockingham Centre (Google Maps)
- Approx. 2.7km* to Rockingham Foreshore (Google Maps)
- Approx. 4km* to Point Peron (Google Maps)

The information provided including photography is for general information purposes only and may be subject to change. No warranty or representation is made as to its accuracy, and interested parties should place no reliance on this information and are required to complete their own independent enquiries, inclusive of due diligence. Should you not be able to attend in person, we offer a walk through inspection via online video walk-through or can assist an independent person/s to inspect on your behalf, prior to an offer being made on the property.

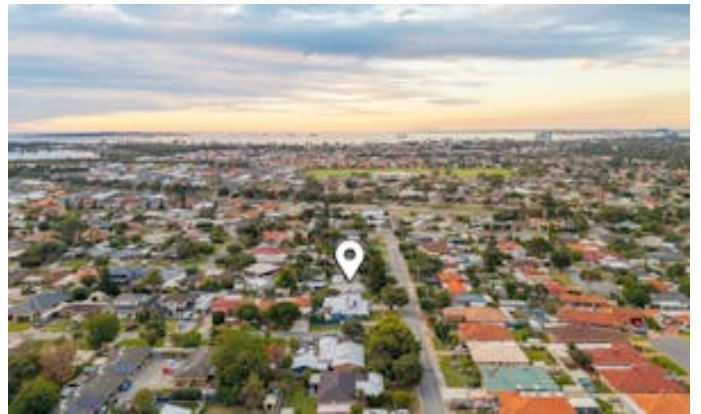
All measurements/dollar amounts are approximate only and generally marked with an * (Asterix) for reference. Boundaries marked on images are a guideline and are for visual purposes only. Buyers should complete their own due diligence, including a visual inspection before entering into an offer and should not rely on the photos or text in this advertising in making a purchasing decision.

- Land Area 817.00 square metres
- Building Area: 110.00 square metres
- Bedrooms: 2
- Bathrooms: 1
- Car Parks: 2
- Double carport











FLOOR PLAN

This floor plan including furniture, fixture measurements and dimensions are approximate and for illustrative purposes only. BoxBrownie.com gives no guarantee, warranty or representation as to the accuracy and layout. All enquiries must be directed to the agent, vendor or party representing this floor plan.

32 Fawdon Street, Safety Bay