



## 5/14 Mirle Street, NEWTOWN, QLD 4350

Spacious Apartment - Walk To Glennie & Clifford Gardens Shopping Centre

Positioned in a tree-lined street and located within the well-maintained Burlington complex, this light-filled first-floor apartment at the rear of the complex presents an outstanding opportunity for first-home buyers, investors or those seeking a low-maintenance lifestyle.

Enjoy the convenience of a short stroll to Clifford Gardens Shopping Centre and easy walking distance to the prestigious Glennie School, and not to mention that we are only minutes to the Toowoomba CBD.

Enjoy the privacy and space that this appealing residence has to offer.

Some Of The Many Property Features:

- \* Light and airy first-floor apartment
- \* Two spacious built-in bedrooms
- \* Generous open-plan kitchen, living and dining area

The particulars contained herein are supplied for information only and shall not be taken as a representation in any respect on the part of the vendor or its agent. Interested parties should contact the nominated person or office for full and current details.

**TYPE:** For Sale

**INTERNET ID:** 300P196993

**SALE DETAILS**

**Offers Above \$525,000**

**CONTACT DETAILS**

**Elders Real Estate  
Toowoomba**  
202 Hume Street  
Toowoomba, QLD  
07 4633 6500

**Sue Edwards**  
0437 377 988

- \* Large bathroom incorporating laundry facilities
- \* North-facing deck capturing natural light and breezes
- \* Single lock-up garage plus shared undercover car accommodation
- \* Expansive treed backyard â## a rare feature for apartment living
- \* Quiet and private position within the complex
- \* Short stroll to Clifford Gardens Shopping Centre
- \* Walking distance to The Glennie School
- \* Current tenancy returning \$420 per week
- \* Tenants scheduled to vacate on 19 June 2026

Additional Information:

Plan: BUP3254 â## Lot 5

Toowoomba Regional Council Rates: Approx. \$1,341.01 per half year

Water Rates: \$397.27 per half year plus consumption

Toowoomba Strata Title Management

Administration Fund Levy: \$427.76 per quarter

Sinking Fund Levy: \$294.44 per quarter

Whether you're looking to secure your first home, add to your investment portfolio, or downsize without compromise, Burlington offers an affordable entry into a highly convenient location. Opportunities such as this are increasingly hard to find, making this property one well worth your inspection.

For further information, a copy of the Disclosure Statement, or to arrange an inspection, please contact Sue Edwards on 0437 377 988.

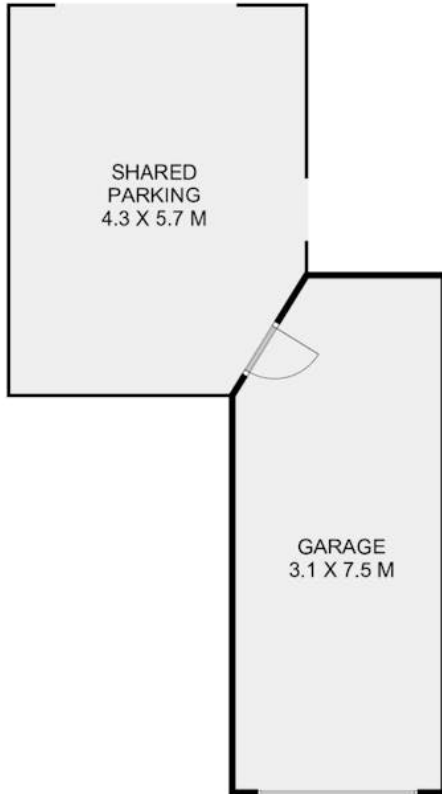
Disclaimer: Some internal photographs have been virtually enhanced for marketing purposes. Virtual enhancements may include digital staging, furniture placement, colour correction, or other cosmetic improvements.

Other features: Close to Schools, Close to Shops, Close to Transport

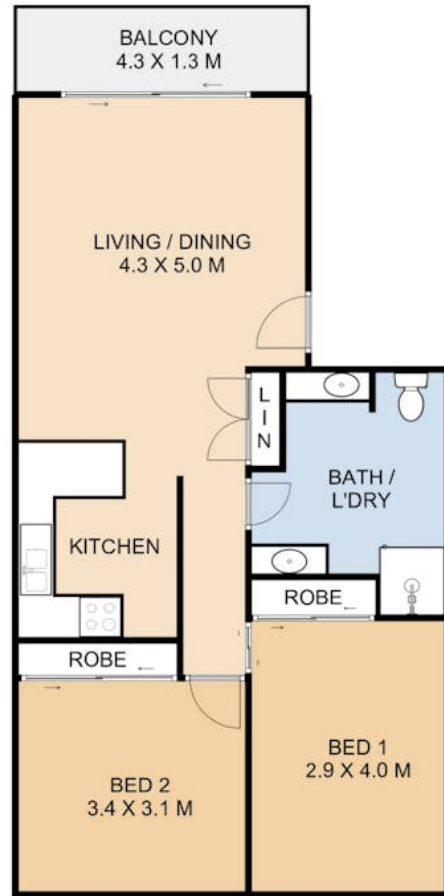
- Land Area 2,044.00 square metres
- Building Area: 122.00 square metres
- Bedrooms: 2
- Bathrooms: 1
- Single garage
- Single carport







LOWER LEVEL



UPPER LEVEL



5/14 Mirle Street, Newtown

This plan is for representational purposes only. All dimensions displayed are approximate and shouldn't be solely relied upon. Do not edit, reproduce, copy, modify, crop or in any way exploit copyright to Statik Illusions. More info : [statikillusions.com/usage-rights/](http://statikillusions.com/usage-rights/)

Internal 93m<sup>2</sup> External 29m<sup>2</sup> Total 122m<sup>2</sup>

