



14 Jacob Street, COWELL, SA 5602

Premium Lifestyle Property on 1,825sqm

Spacious House, Impressive Outdoor Entertainment, & Quality Added Infrastructure

Positioned in a quiet, low-traffic street and presented to an exceptional standard, this immaculately maintained property delivers a rare opportunity for buyers seeking space, functionality, and a complete 'move-in ready' lifestyle with zero future work required.

Key Land & Infrastructure details:

- Generous 1,825sqm residential allotment
- Fully serviced: mains power, water & common effluent
- Approx. 50,000L rainwater storage plus solar system for efficiency
- Secure fully fenced allotment with low-maintenance surrounds
- Established fruit trees & productive vegetable gardens

Residence information:

The particulars contained herein are supplied for information only and shall not be taken as a representation in any respect on the part of the vendor or its agent. Interested parties should contact the nominated person or office for full and current details.

TYPE: For Sale

INTERNET ID: 300P197051

SALE DETAILS

\$650,000

CONTACT DETAILS

CLEVE / COWELL
31 Rudall Road & 14 Main Street
CLEVE / COWELL, SA
08 8621 7100
RLA: 62833

Nick Schumann
0428 383 833

Quality-built (2010) transportable timber-frame home, meticulously maintained with modern improvements throughout.

- 4 bedrooms with Master featuring a walk-in robe & ensuite, and 2 additional bedrooms with built-in robes
- Expansive open-plan living & dining zone with updated kitchen featuring a new stove, sink, and upgraded benchtops & cabinetry
- Split system air-conditioning & ceiling fans to key areas
- Fresh internal/external presentation with quality paintwork
- Modern floating flooring and well-kept carpets
- Functional laundry with direct outdoor access

Outdoor Living Excellence includes:

A true standout, designed for year-round use and entertainment:

- Approx. 7.5m x 15m fully enclosed alfresco
- Seamless connection from kitchen & hallway
- Equipped outdoor kitchen (sink, bench, cabinetry)
- Multiple power points, lighting, fans & TV connectivity

Shedding & Vehicle Infrastructure:

Built for both lifestyle and practicality:

Main Shed (Approx. 15m x 9m x 3m)

- Excellent condition with easy large-vehicle access
- 4 sliding doors, full concrete floor
- Power including 3-phase
- Internal storage zones + mezzanine area

Garage (Approx. 7.5m x 5m x 2m)

- Situated at front for convenience
- Concrete floor, power & lighting
- Electric roller door + direct roadside access

Value Proposition

This is a rare, high-calibre offering combining space, infrastructure, and a meticulously maintained home environment. Every element has been thoughtfully improved, delivering a fully established, low-maintenance asset with immediate liveability and no capital expenditure required.

Ideal for buyers seeking:

- Premium lifestyle without compromise
- Superior shedding & outdoor functionality

- A property that presents as complete from day one

Enquire today to secure a standout property in a tightly held, peaceful location.

Contact Nick 0428 383 833

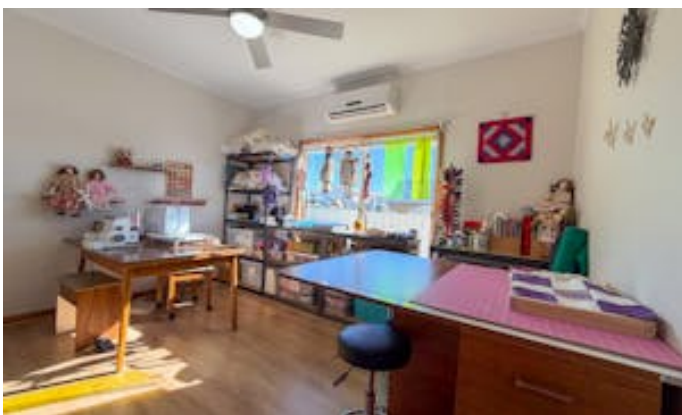
Disclaimer: all information provided has been obtained from sources we believe to be accurate, however, we cannot guarantee the information is accurate and we accept no liability for any errors or omissions (including but not limited to a property's land size, floor plans and size, building age and condition). Interested parties should make their own enquiries and obtain their own legal advice.

RLA 62833

Other features: 3 Phase Power, Close to Schools, Close to Shops, Openable Windows, Window Treatments

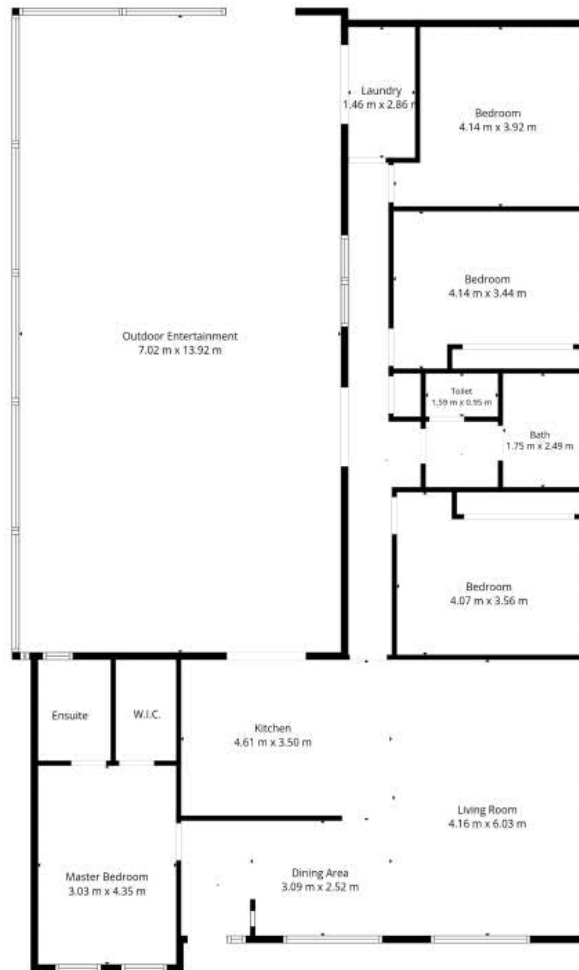
- Land Area 1,825.00 square metre
- Bedrooms: 4
- Bathrooms: 2
- Double garage
- Ensuite











TOTAL: 145 m2
1st floor: 145 m2
EXCLUDED AREAS: OUTDOOR ENTERTAINMENT: 98 m2, WALLS: 12 m2

Accurate (approximate) Measurements Are Recorded With Digital Devices.

