

10/55 The Vines Drive, NORMANVILLE, SA 5204

Nearly New, Perfect for you!

This almost-new villa-style home is ready for you to relax and enjoy.

All the hard work has been done—simply sit back and watch the kangaroos wander amongst the vines while taking in the peaceful surroundings.

Built in 2025, this attractive brick veneer home presents an exciting opportunity to secure a near-new property at exceptional value. Unfortunately, the current owners were unable to enjoy the home for long, creating a rare chance for the next owner to purchase a virtually untouched home without the wait of building.

Positioned to take full advantage of its northerly aspect, the spacious living room sits adjacent to the entrance and is sure to become a favourite retreat throughout the cooler months. Featuring elegant coffered ceilings and a large picture window, the space is bathed in beautiful winter sunshine, naturally warming the home while remaining protected from the harsher summer sun. It's thoughtful, climate-smart design perfectly suited to Australian conditions.

The remainder of the home is equally impressive. High ceilings and large windows

The particulars contained herein are supplied for information only and shall not be taken as a representation in any respect on the part of the vendor or its agent. Interested parties should contact the nominated person or office for full and current details.

TYPE: For Sale

INTERNET ID: 300P197150

SALE DETAILS

\$710,000

CONTACT DETAILS

Normanville

91 Main Road
Normanville, SA
08 8598 6100

Luke Hutt

0418 815 049

throughout create a wonderful sense of space, light, and openness. All four bedrooms feature built-in robes and individually controlled ducted heating and cooling, ensuring year-round comfort for the whole family. The stylish three-way bathroom includes heated, illuminated his-and-hers mirrors and vanities, while a separate bath and shower provide practicality and flexibility.

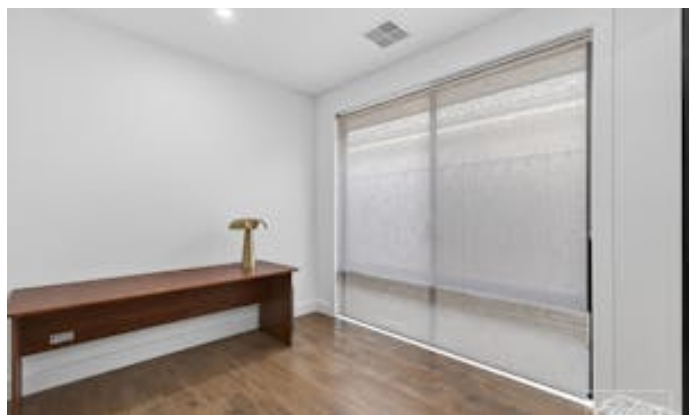
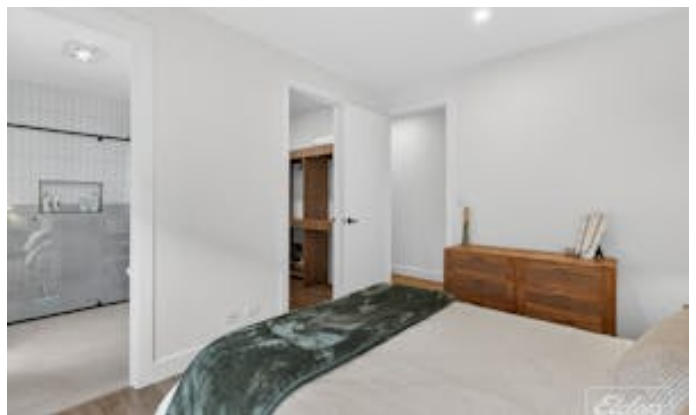
The stunning open-plan kitchen, dining, and living area is undoubtedly the heart of the home. From the contemporary black kitchen finishes to the ever-changing green backdrop beyond, every aspect has been thoughtfully designed. The dining area features a built-in hutch and large glass doors opening seamlessly to the alfresco entertaining space.

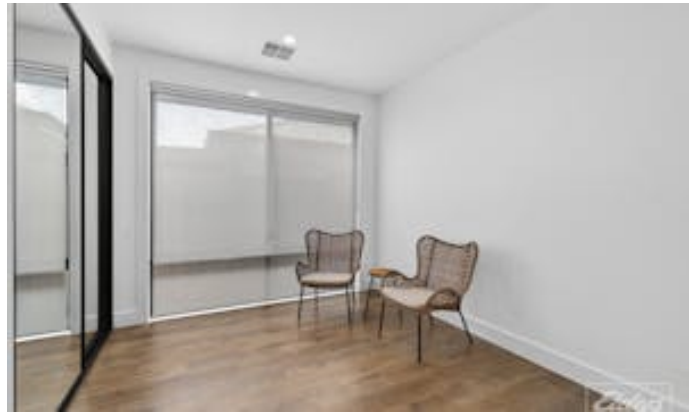
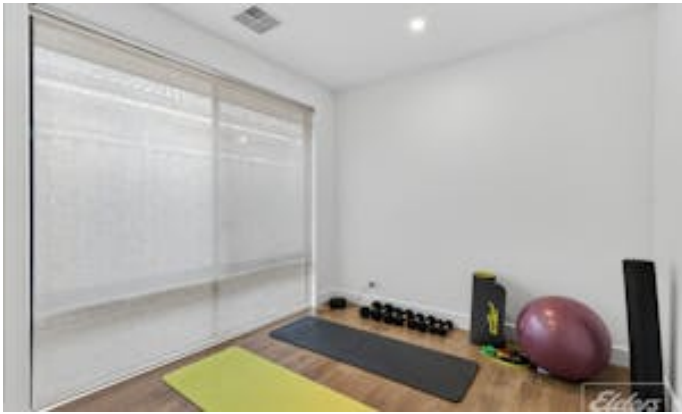
However, my favourite feature is the outlook from the lounge room. Sit back and enjoy uninterrupted views across the rolling vineyards to the dramatic cliffs of Lady Bay in the distance. Just a short walk away, this spectacular stretch of coastline provides an incredible natural backdrop and a constant reminder of the exceptional lifestyle on offer.

Disclaimer: We have in preparing this information used our best endeavors to ensure that the information contained herein is true and accurate, but accept no responsibility and disclaim all liability in respect of any errors, omissions, inaccuracies or misstatements that may occur. Prospective purchasers should make their own enquiries to verify the information contained herein. RLA62833

Other features: Area Views, Bush Retreat, Car Parking - Surface, Disabled Access, Golf Course Estate, Heating

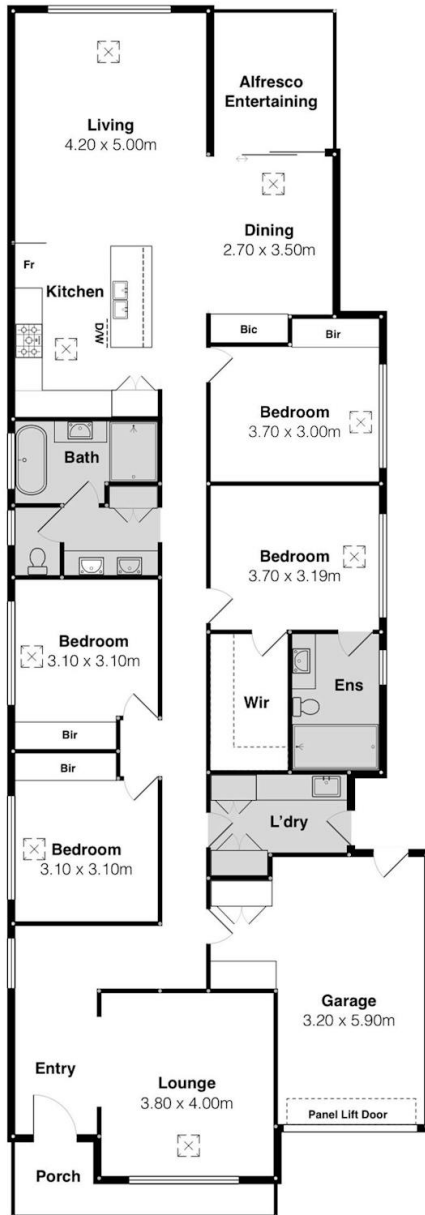
- Land Area 372.08 square metres
- Building Area: 223.11 square metres
- Bedrooms: 4
- Bathrooms: 2
- Car Parks: 1
- Single garage
- Ensuite











10/55 The Vines Dr, Normanville

Scale in metres. This drawing is for illustration purposes only. All measurements are approximate and details intended to be relied upon should be independently verified.



PRODUCED BY
SOUTH COAST STUDIOS