



## 7 Eime Drive, BLYTH, SA 5462

### Executive Family Living with Every Modern Convenience

Perfectly presented and finished to an exceptional standard, this impressive four-bedroom executive residence offers spacious family living with nothing left to do but move in and enjoy.

Designed with both comfort and functionality in mind, the home features a light-filled open plan living and dining area centred around a stunning marble island bench. The stylish kitchen is equipped with upgraded appliances, a generous butler's pantry, and ample storage, making it ideal for everyday living and entertaining alike.

Multiple living zones provide space for the whole family, including a family room, separate living area, and a formal lounge, ensuring flexibility for both relaxation and entertaining guests.

The spacious master suite boasts a sparkling ensuite, while the remaining bedrooms are serviced by a beautifully appointed main bathroom. Quality finishes and meticulous attention to detail are evident throughout the home.

Year-round comfort is assured with ducted reverse-cycle air conditioning, while energy efficiency is enhanced by a 6.6kW solar system. A substantial 22,500-litre rainwater storage system provides additional practicality and sustainability.

Outside, the double garage offers secure vehicle accommodation and convenient

**TYPE:** For Sale

**INTERNET ID:** 300P197165

**SALE DETAILS**

**\$650,000- \$690,000**

**CONTACT DETAILS**

**Elders Real Estate Clare Valley / Burra**

230 Main North Road

Clare, SA

08 8842 9300

**Rob Calaby**

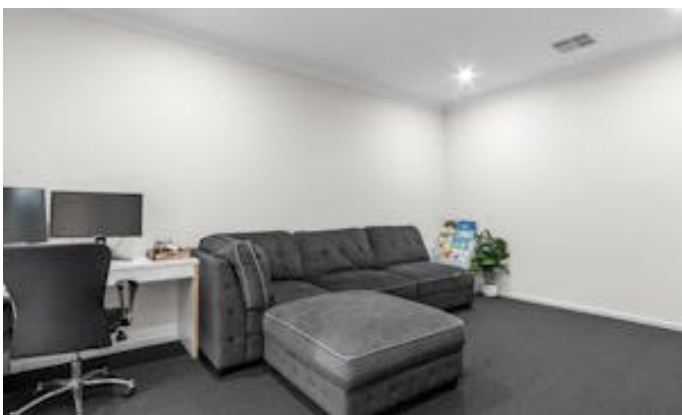
0428560301

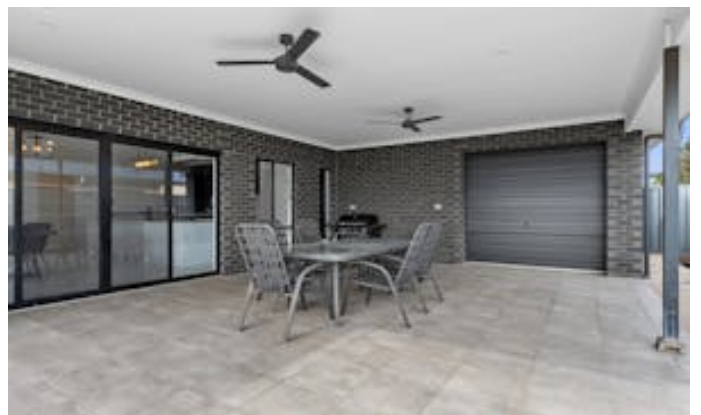
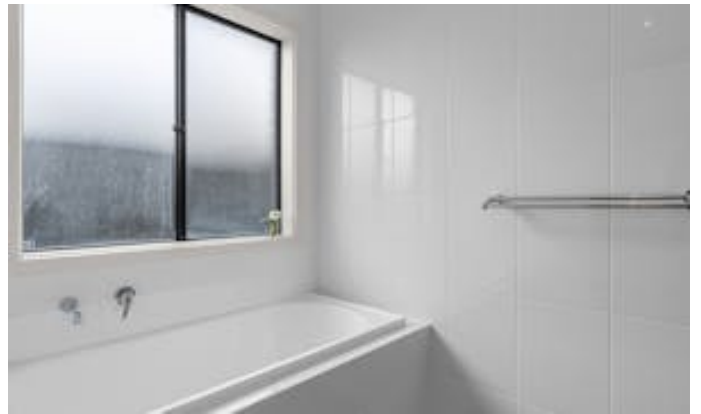
internal access. The large outdoor entertaining area adjacent to the living area is an entertainer's dream. The immaculate presentation of the property means every detail has been completed to a high standard, allowing the new owners to simply unpack and enjoy their new lifestyle.

Offering the perfect combination of space, style, and modern convenience, 7 Eime Drive, Blyth is an outstanding opportunity for families, retirees, or professionals seeking a quality home in a welcoming community.

- Land Area 779.00 square metres
- Bedrooms: 4
- Bathrooms: 2
- Car Parks: 2
- Double garage











Living:	225.49sqm
Garage/Shed:	42.80sqm
Porch/Alfresco:	52.87sqm
Total:	321.16sqm

This drawing is for illustration purposes only. All measurements are internal and approximate. Details intended to be relied upon should be independently verified.  
Produced by Open2view.com

