



16 Davis Court, ROSEBERY, NT 0832

SPACIOUS HOME WITH POOL, SOLAR & HUGE BACKYARD

Elders Top End Group is proud to present this 3 bedroom, 2 bathroom home in Rosebery with a good size in ground pool and solar panels.

Nestled in a quiet cul-de-sac in the highly sought-after suburb of Rosebery, this beautifully presented family home offers space, comfort, and outstanding outdoor living.

Property Features:

- 3 spacious bedrooms
- Open-plan living and dining area
- Air-conditioning throughout
- Solar power system and solar hot water
- Large covered verandah and multiple outdoor entertaining areas
- Inground swimming pool with shade sail

TYPE: For Rent

INTERNET ID: 300P197172

RENTAL DETAILS

Rent / Lease:

\$790 per week

CONTACT DETAILS

Darwin

70 Smith Street

DARWIN, NT

08 8946 0500

Samantha Clarke

0436 922 232

- Huge fully fenced backyard with established trees
- Large shed/workshop with side access
- Double carport plus additional space for boat, caravan, or trailer
- Available Now!!

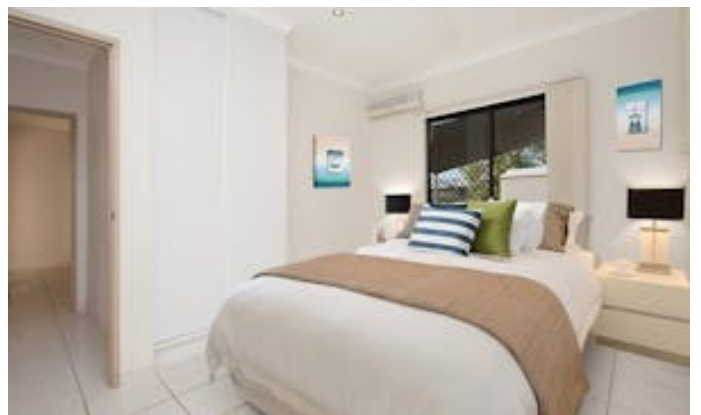
Located close to Rosebery Primary School, childcare facilities, parks, playgrounds, sporting facilities, and major shopping centres in Palmerston, this home offers the perfect balance of convenience and lifestyle.

How to apply? A link will be sent via 2Apply once the property has been inspected.

Elders does NOT accept 1FORM applications. Please leave your details to register for the next available inspection.

Other features: Close to Schools, Close to Shops, Close to Transport

- This property is: Unfurnished
- Pets: No
- Available Now
- Land Area 905.00 square metres
- Building Area: 216.00 square metres
- Bedrooms: 3
- Bathrooms: 2
- Car Parks: 2







16 DAVIS COURT, ROSEBERY

DISCLAIMER

PLANS SHOWN ARE FOR MARKETING PURPOSES ONLY, ALL DIMENTIONS ARE APPROXIMATE AND NOT TO SCALE. THEY ARE SUBJECT TO ERRORS AND INACCURACIES AND NO LIABILITY WILL BE ACCEPTED. INTERESTED PARTIES SHOULD MAKE THEIR OWN INQUIRIES.