



29a/ Steere Crescent, CAREY PARK, WA 6230

Modern Family Living with Space, Comfort & Convenience

Built in 2016 by Redink Homes, this well-presented 4-bedroom, 2-bathroom home offers the perfect combination of modern comfort, space, and low-maintenance living. Whether you're a growing family, first home buyer, downsizer, or savvy investor, this quality home presents an outstanding opportunity in a highly convenient location.

Positioned on an easy-care battleaxe 443sqm* block, this spacious home has a thoughtfully designed floorplan, providing multiple living zones to suit the needs of modern family life.

At the heart of the home is the spacious open-plan kitchen, living, and dining area, creating a welcoming hub for everyday living and entertaining. The well-appointed kitchen features ample bench space, generous storage, a huge pantry, and a practical layout designed for busy households.

Adding further versatility to the floorplan is a separate lounge room, providing the ideal second living space for movie nights, home office, or simply a quiet place to unwind.

The generous master suite offers a private retreat complete with walk-in robe and

The particulars contained herein are supplied for information only and shall not be taken as a representation in any respect on the part of the vendor or its agent. Interested parties should contact the nominated person or office for full and current details.

TYPE: For Sale

INTERNET ID: 300P197233

SALE DETAILS

All offers by 1st July

CONTACT DETAILS

Bunbury

11 Stirling Street
Bunbury, WA

Tom Kitchen

0411 947 284

ensuite, while three additional bedrooms are all well-sized and serviced by the main family bathroom.

Outside, enjoy the benefits of low-maintenance living with minimal upkeep required, allowing you more time to enjoy your weekends. The double lock-up garage provides secure parking and additional storage options.

Conveniently located close to schools, shopping centres, parks, medical facilities, and public transport, with Bunbury CBD just a short drive away, this is a home that perfectly combines lifestyle, practicality, and location.

Property Highlights:

Built in 2016 by Redink Homes

4 spacious bedrooms

2 bathrooms

Ducted A/C

Spacious open-plan kitchen, living and dining area

Separate lounge / second living room

Huge pantry and excellent storage throughout

Functional family-friendly floorplan

Double lock-up garage

Modern low-maintenance design

Easy-care 443sqm* battleaxe block

Convenient Location:

Close to schools, shops and everyday amenities

Easy access to Bunbury CBD

Nearby parks and recreational facilities

Public transport within easy reach

Close to South West Health Campus, ECU and South Regional TAFE

Offering modern family living with the flexibility of multiple living spaces, 29A Steere Crescent presents exceptional value in a highly convenient location.

Listed exclusively by Tom Kitchen - Elders Real Estate South West. For further information or to arrange a private inspection, call or SMS 0411 947 284.

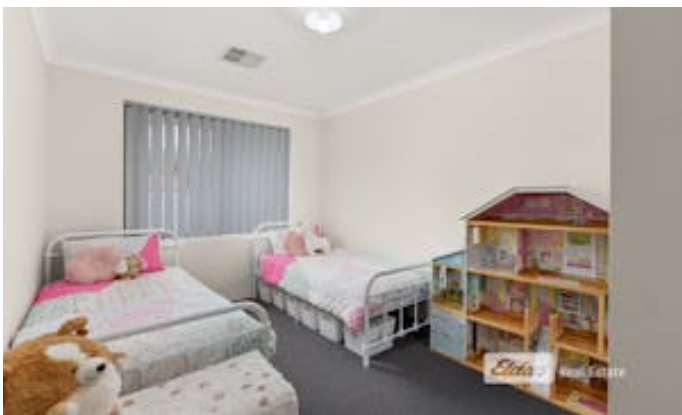
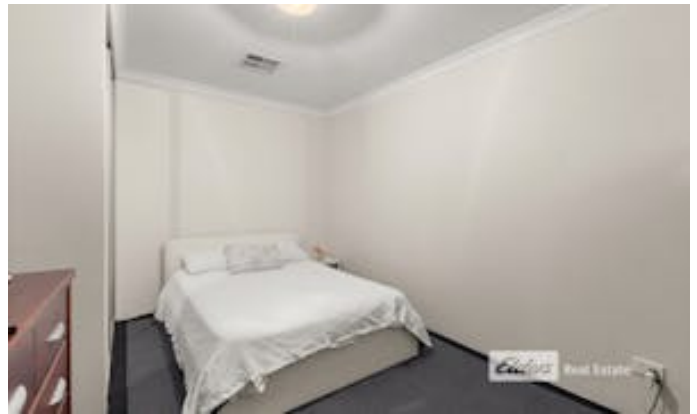
Buyers Note: All measurements, areas and dollar amounts are approximate only and provided as a guide. Boundaries shown in photographs or marketing material are indicative only. Prospective buyers should undertake their own due diligence and rely on their own inspections and enquiries before making any purchasing decision.

Other features: Close to Schools, Close to Shops, Close to Transport

The particulars contained herein are supplied for information only and shall not be taken as a representation in any respect on the part of the vendor or its agent. Interested parties should contact the nominated person or office for full and current details.

- Land Area 443.00 square metres
- Bedrooms: 4
- Bathrooms: 2
- Car Parks: 2









Disclaimer: Please note this floor plan is for marketing purposes and is to be used as a guide only. All efforts have been made to ensure its accuracy at time of publication.