



86 St George Terrace, ARMAGH, SA 5453

Country Charm, Vineyard Views & Space to Thrive on 5,616m²

Set on a generous 5,616m² allotment in a peaceful rural setting, 86 St Georges Terrace, Armagh offers the perfect blend of comfort, space and lifestyle. Surrounded by established gardens and enjoying picturesque views across neighbouring vineyards, this attractive property provides a wonderful opportunity to embrace country living without compromise.

The solidly built home features three well-proportioned bedrooms and a spacious open-plan living and dining area that forms the heart of the home. A striking raked ceiling enhances the sense of space and light, creating a warm and inviting atmosphere for everyday living and entertaining.

The modern kitchen is well equipped with ample storage and bench space, making meal preparation a pleasure while remaining connected to family and guests in the adjoining living areas. Year-round comfort is assured with split-system air conditioning, while solar power helps reduce energy costs and improve efficiency.

Outside, the property continues to impress. The expansive grounds provide plenty of room for children, pets, gardening enthusiasts or simply enjoying the tranquil surrounds. Established gardens create a private and attractive setting, complemented by sweeping

TYPE: For Sale

INTERNET ID: 300P197269

SALE DETAILS

\$700,000- \$750,000

CONTACT DETAILS

Elders Real Estate Clare Valley / Burra

230 Main North Road
Clare, SA
08 8842 9300

Rob Calaby
0428560301

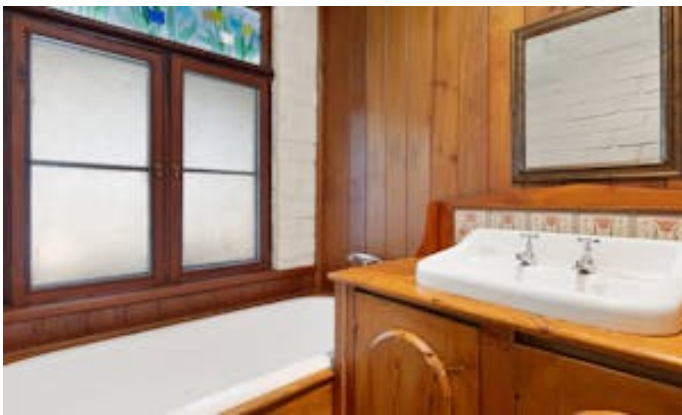
rural views.

Water security is well catered for with rainwater storage servicing the home, supported by a backup bore for maintaining the gardens and grounds. For those requiring additional storage or workspace, the substantial 9m x 6m shed with roller doors offers excellent versatility for vehicles, equipment, hobbies or a workshop.

Whether you're seeking a peaceful family home, a lifestyle property with room to move, or a country retreat surrounded by beautiful scenery, this appealing Armagh property delivers space, practicality and charm in equal measure.

- Land Area 5,616.00 square metres
- Bedrooms: 3
- Bathrooms: 1
- Car Parks: 6











Living:	130.82sqm
Verandah:	67.93sqm
Carport:	37.12sqm
Deck:	41.60sqm
Shed:	57.60sqm
Total:	335.07sqm

This drawing is for illustration purposes only. All measurements are internal and approximate. Details intended to be relied upon should be independently verified.
Produced by Open2view.com

