



## 47 Bellevue Drive, KINGSTON SE, SA 5275

### Coastal Simplicity!

Whether you're searching for your first home, a low maintenance investment, or that tidy holiday shack this is the one. 47 Bellevue Drive, Wyomi delivers comfort, practicality and relaxed coastal living in one appealing package.

Well maintained, this quaint three bedroom, one bathroom home is neat as a pin and ready to enjoy from day one. The functional layout offers comfortable living spaces, while the tidy kitchen and well-kept interiors create a welcoming atmosphere throughout.

Step outside and discover a property designed for easy living. The outdoor entertaining area provides the ideal space to gather with family and friends, while the established fruit orchard adds charm and the opportunity to enjoy homegrown produce. A shed complete with workshop space offers excellent storage and room for hobbies, projects or beach gear.

Additional features include rainwater tanks, low-maintenance grounds and a peaceful setting within the ever-popular Wyomi community.

**TYPE:** For Sale

**INTERNET ID:** 300P197441

### SALE DETAILS

**\$350,000**

### CONTACT DETAILS

**Kingston**

45 Holland Street

Kingston, SA

08 8767 4000

RLA: 62833

**Kait Copping**

0407 023 737

Offering an affordable entry into the market and a lifestyle many dream of, this property would make an ideal first home, holiday retreat or lock-and-leave coastal getaway.

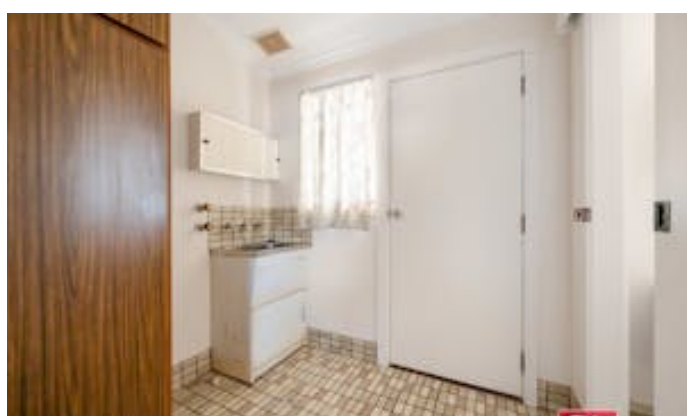
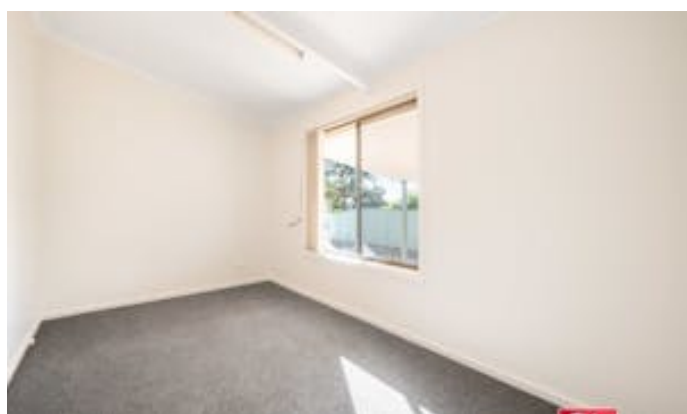
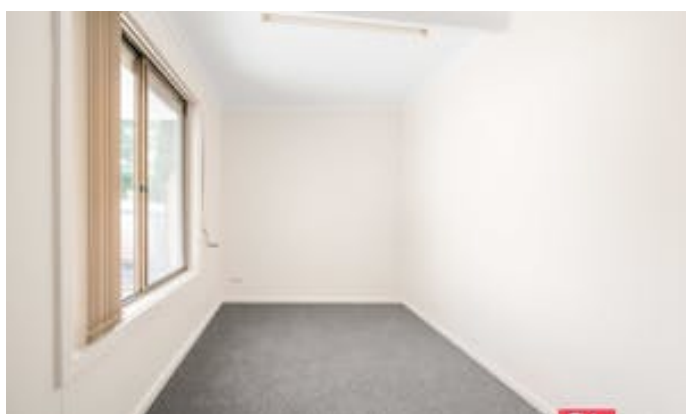
Move in, unpack and start enjoying the relaxed coastal lifestyle.

Contact Kait Copping on 0407 023 737 or [kait.copping@elders.com.au](mailto:kait.copping@elders.com.au) to find out more.

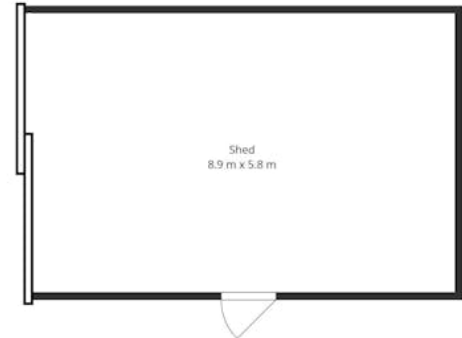
Disclaimer: We have in preparing this information used our best endeavors to ensure that the information contained herein is true and accurate, but accept no responsibility and disclaim all liability in respect of any errors, omissions, inaccuracies or misstatements that may occur. Prospective purchasers should make their own enquiries to verify the information contained herein. RLA62833

- Land Area 726.00 square metres
- Bedrooms: 3
- Bathrooms: 1
- Car Parks: 2
- Double garage









Sizes And Dimintions Are Approximate, Actual May Vary

