



9 Centenary Road, STREAKY BAY, SA 5680

Eco-Friendly Coastal Haven with Established Garden Sanctuary

Nestled in a peaceful street within the highly sought-after coastal township of Streaky Bay, 10 Centenary Road presents an exceptional opportunity to embrace a relaxed lifestyle surrounded by natural beauty and modern convenience.

Set on a beautifully established allotment, this low-maintenance transportable home is move-in ready and offers an enviable combination of comfort, practicality, and sustainable living. From the moment you arrive, you'll appreciate the welcoming atmosphere, thoughtfully designed outdoor spaces, and the abundance of greenery that creates a private garden sanctuary.

Inside, the home retains its original charm with polished pine floorboards flowing throughout the main residence. A spacious extension seamlessly incorporates the dining and kitchen area, opening onto a timber entertaining deck where you can enjoy your morning coffee while overlooking the lush, evergreen backyard. The gardens are truly a standout feature, boasting an impressive array of mature trees, shrubs, colourful ground covers, raised vegetable beds, a garden shed, and a small animal enclosure.

Accessibility has been carefully considered, with both front and rear ramp access, while the attractive brick-clad exterior ensures durability and minimal upkeep. Dual driveways on either side of the home provide excellent functionality. One side offers a secure, enclosed area housing the solar system and wood storage, while the other features a concrete driveway leading through an electronic roller door carport to a substantial 6m x

TYPE: For Sale

INTERNET ID: 300P197458

SALE DETAILS

\$440,000

CONTACT DETAILS

WUDINNA

44 Eyre Highway

WUDINNA, SA

08 8680 3300

RLA: 62833

Elaine Seal

0428 400 210

6m powered double garage. Currently configured as a workshop, the garage includes a concrete floor, lighting, power outlets, and convenient access to the rear yard.

A front verandah welcomes you into the foyer and through to the comfortable L-shaped lounge. This inviting living space features reverse-cycle air conditioning, a New Zealand Masport slow combustion heater with self-cleaning glass door, two ceiling fans, fluorescent lighting, and a cosy study nook or library corner.

The central hallway offers excellent storage with a four-door linen cupboard and leads to three well-proportioned bedrooms, all equipped with ceiling fans. The main bedroom includes reverse-cycle air conditioning, while the remaining bedrooms feature built-in robes. The bathroom and laundry areas are tiled for practicality and include a corner shower, vanity, wall mirror, heat lamps, exhaust fan, separate toilet, and ample laundry storage.

The thoughtfully designed kitchen and dining extension is finished with quality stone-look ceramic tiles and features a single sink, electric fan-forced oven and grill, easy-clean ceramic cooktop. Two glass sliding doors connect the indoor living spaces to the outdoors, with one opening to a timber ramp and the other leading directly onto the entertaining deck.

Beyond the deck lies a gardener's paradise. Wander through winding pathways surrounded by healthy trees, shrubs, flowering plants, and ground covers, all the way to the rear boundary where you'll find raised garden beds, a storage shed for mulch and hay, animal enclosure, and two substantial 22,500-litre rainwater tanks. Additional water storage is provided by two smaller poly tanks, while a separate garden shed with concrete floor sits conveniently behind the garage.

Designed to maximise comfort year-round, the home enjoys a desirable north-south aspect that captures abundant natural light and cooling cross-breezes. Combined with the home's wind-out windows, solar system, and established gardens, the property offers an environmentally conscious lifestyle with exceptional energy efficiency and a genuine connection to nature.

Whether you're seeking a peaceful retirement retreat, a sustainable lifestyle property, or simply a place to enjoy the incredible coastal community of Streaky Bay, this charming residence delivers on every level.

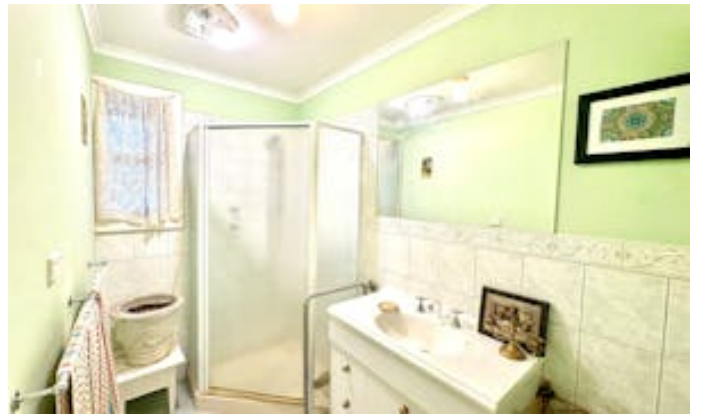
With fishing, boating, stunning beaches, and a welcoming community at your doorstep, it's easy to see why Streaky Bay is regarded as one of Australia's most desirable coastal destinations.

A walk-through video is available online. To arrange your inspection or obtain further information, contact Elaine at Elders today. Properties offering this combination of lifestyle, sustainability, and value are highly sought after and won't remain available for long.

Other features: Roller Door Access

- Land Area 1,333.00 square metre
- Building Area: 130.00 square metres
- Bedrooms: 3
- Bathrooms: 1
- Car Parks: 1
- Single garage
- Single carport









FLOOR PLAN

This floor plan including furniture, fixture measurements and dimensions are approximate and for illustrative purposes only. BoxBrownie.com gives no guarantee, warranty or representation as to the accuracy and layout. All enquiries must be directed to the agent, vendor or party representing this floor plan.

9 Centenary Road, Streaky Bay