



16/86 Woodford Street, ONE MILE, QLD 4305

Great value for an astute investor or owner occupier

This well presented two-bedroom duplex offers low-maintenance living all tucked away in a quiet complex close to schools, shops, and everyday conveniences.

Designed for comfort and practicality, the home features spacious bedrooms, and a well-appointed bathroom. Outside, you'll find a good size yard, perfect for relaxing or hosting family and friends.

Accommodation:

- * Large master bedroom with built-in robes & air conditioning.
- * Generous second bedroom with enough space for a queen-sized bed
- * Spacious open-plan living and dining areas with air conditioning
- * Single lock-up garage with a second guest parking

Features Include:

The particulars contained herein are supplied for information only and shall not be taken as a representation in any respect on the part of the vendor or its agent. Interested parties should contact the nominated person or office for full and current details.

TYPE: For Sale

INTERNET ID: 300P197532

SALE DETAILS

For Sale

CONTACT DETAILS

Ipswich

8 Downs Street
North Ipswich, QLD
07 3201 3600

Scott Reeves

0413185649

- * Outdoor entertaining area
- * Fully fenced backyard overlooking private park and BBQ area
- * Quiet location with plenty of space for the kids

Located in the heart One Mile, this property enjoys close proximity to local shops, schools, parks, and public transport, ensuring convenience is always at your doorstep.

Whether you're a first-home buyer, downsizer, or savvy investor, this property presents an outstanding opportunity to secure quality, space, and location in one exceptional package.

Other features: Area Views, Car Parking - Surface, Close to Schools, Close to Shops, Close to Transport

- Land Area 90.00 square metres
- Building Area: 90.00 square metres
- Bedrooms: 2
- Bathrooms: 1
- Car Parks: 1
- Single garage





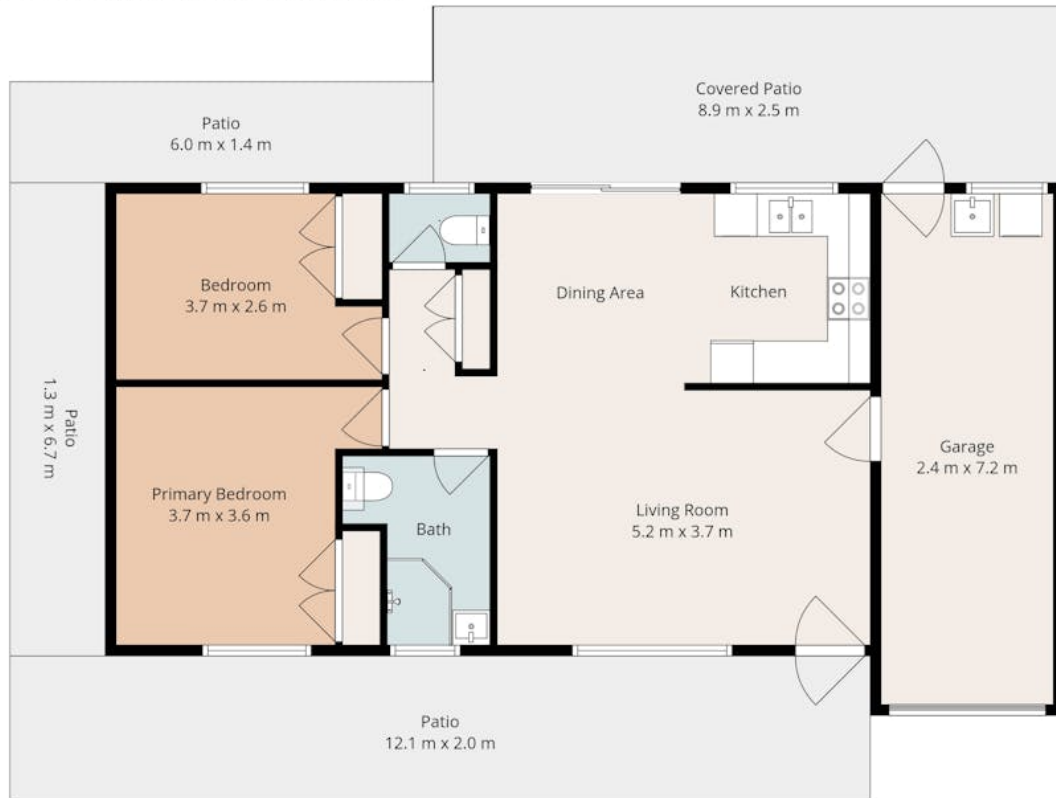
16/86 Woodford St, One Mile



2 1.5 | 2

Scott Reeves | 0413 185 649

Total approx floor area 157m² (including covered external areas)



Whilst every attempt has been made to ensure the accuracy of the floor plan contained here, measurements of doors, windows, rooms and any other items are approximate and no responsibility is taken for error, omission or mis-statement. This plan is for illustrative purposes only and should only be used as such by any prospective purchaser. The services system and appliances shown have not been tested and no guarantee as to their operability or efficiency can be given.