

13 Elizabeth Street, KINGSGROVE, NSW 2208

Spacious Family Entertainer on 695sqm with Pool & Retreat

Set on a substantial 695sqm (approx.) parcel of land with a wide 18m frontage, this home provides the complete package for a family lifestyle. Positioned high on the street in a family-friendly location, it is just a stroll from vibrant Kingsgrove Village, local schools, train station, parks and Bexley Golf Course.

Boasting superb street presence, the home features four double-sized bedrooms, built-ins, plus upper-level bedroom includes ensuite & enjoys a separate living area & kitchenette. There are two additional bathrooms and a fourth WC for added convenience. Designed for comfortable family living, it offers multiple living areas for parents and children alike, including a formal lounge, separate formal dining, TV/family room & casual dining area. The large granite kitchen is equipped with a gas cooktop and dishwasher.

Outdoors, enjoy a sunny backyard complete with a large in-ground pool and spa, plus a covered terrace ideal for entertaining. Additional features include a drive-through double garage with storage and a separate teenage or family retreat, featuring three rooms - ideal as a potential granny flat (STCA).

Other features: Close to Schools, Close to Shops, Close to Transport, Kitchenette, Spa

TYPE: Auction

INTERNET ID: 300P197546

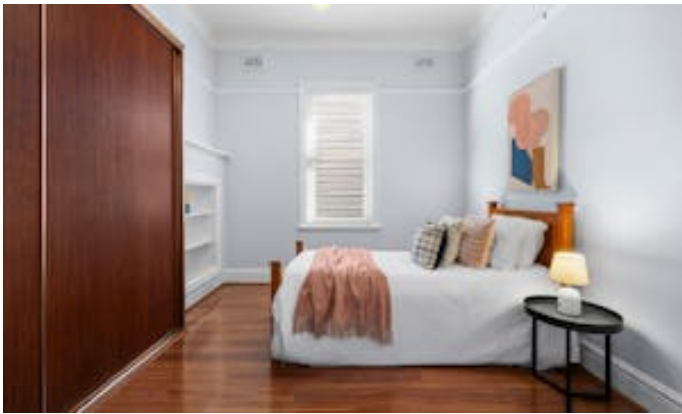
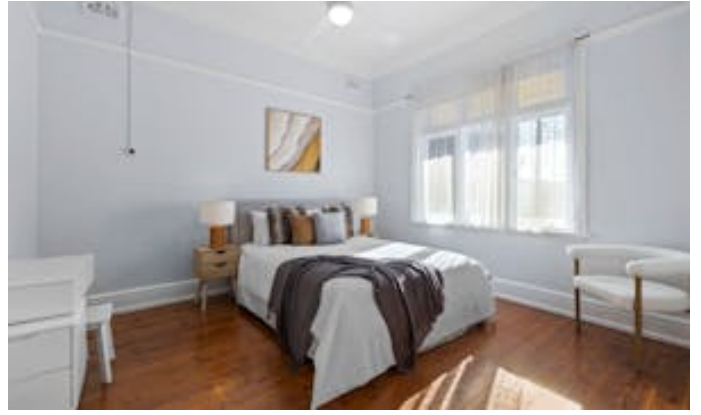
AUCTION DETAILS

12:00pm, Saturday June 27th, 2026

CONTACT DETAILS

Tony Licastro
0416237349

- Land Area 695.00 square metres
- Bedrooms: 4
- Bathrooms: 3
- Car Parks: 2
- Double garage
- Ensuite
- Floorboards









13 ELIZABETH STREET, KINGSGROVE

Disclaimer: Information in this brochure is not independently verified. The vendor and agents disclaim liability, and accuracy is not guaranteed. Prospective purchasers should exercise their judgment.