



## 11/2A Tangarra Street East, CROYDON PARK, NSW 2133

### Oversized Floorplan and Courtyard in A Convenient Location

Nestled in a gorgeous garden setting in a well-maintained security building, this house-like, east facing apartment offers spacious living in a popular location.

Complete with a full width exclusive use courtyard, lock up garage, separate storeroom and internal laundry with second WC. Set among landscaped gardens and bordering Enfield's Henley Park & Aquatic Centre, it combines space and convenience ideal for young families, professionals or downsizers.

The huge entertainer's size courtyard with timber decking steps up to a balcony and flows into the spacious living room creating a graceful haven of space. A casual dining area is adjacent to the kitchen featuring a breakfast bar, dishwasher and updated electric cooktop. Generous bedrooms include built in wardrobes and there's a study/office nook too.

The oversized layout with open plan living/dining areas and outdoor garden is perfect for entertaining. The internal area with the balcony is 117sqm, 17sqm garage, 3sqm storage cage and approx. 67sqm garden.

**TYPE:** For Sale

**INTERNET ID:** 300P197584

**SALE DETAILS**

**Forthcoming Auction**

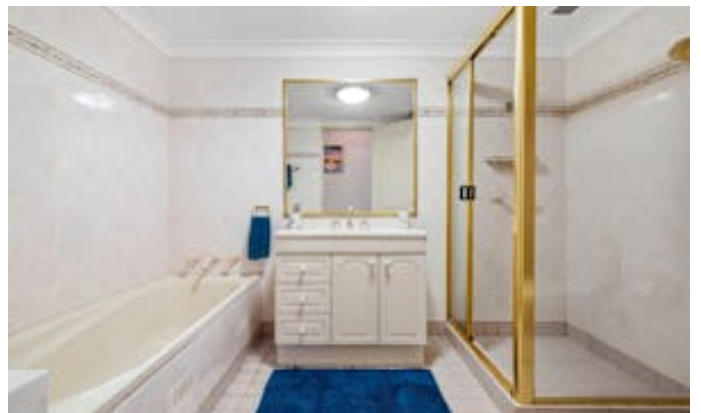
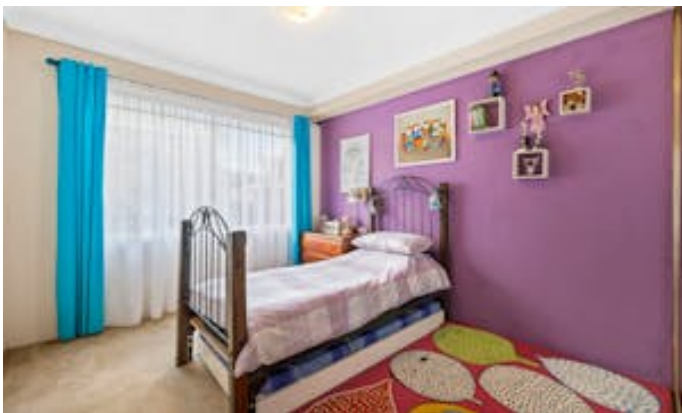
**CONTACT DETAILS**

**Simon Hadzic**  
0418 297 287

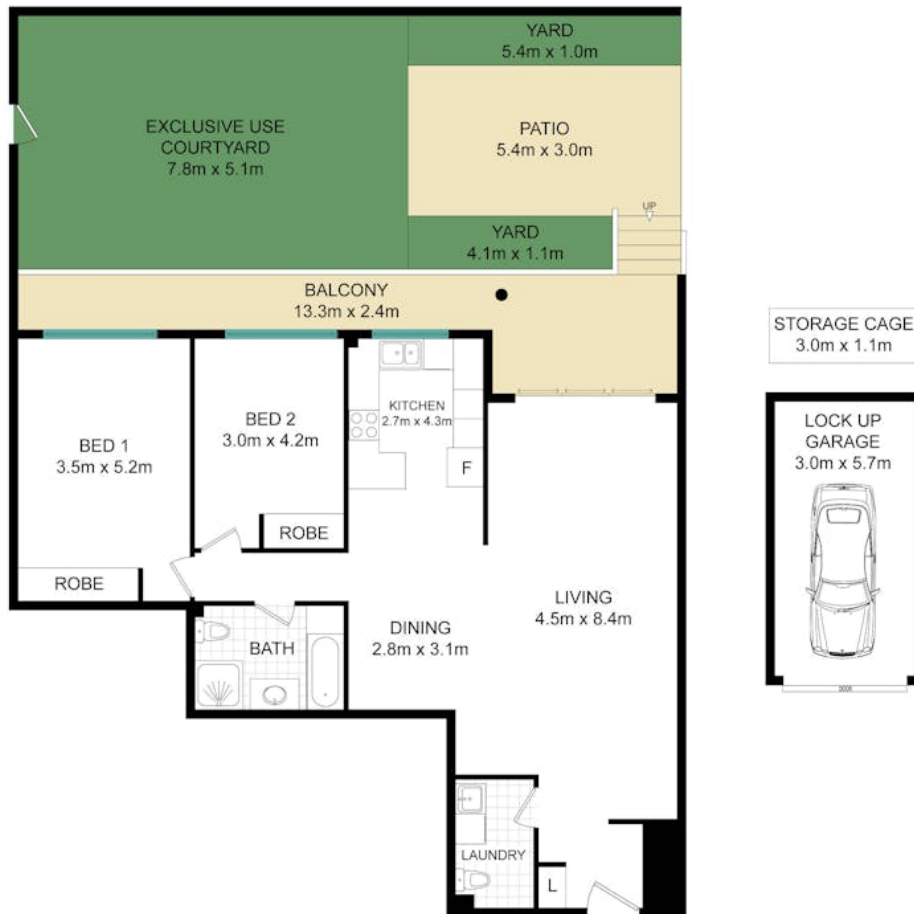
A great opportunity for buyers who want a unique apartment with the opportunity to renovate to your own style. Easy access to popular schools and buses to Strathfield and Burwood train stations.

Other features: Close to Schools, Close to Shops, Close to Transport

- Bedrooms: 2
- Bathrooms: 1
- Single garage







11/2A TANGARRA STREET EAST, CROYDON PARK

Disclaimer: Information in this brochure is not independently verified. The vendor and agents disclaim liability, and accuracy is not guaranteed. Prospective purchasers should exercise their judgment.