



14 Ackerleys Road, HAMILTON, VIC 3300

Impeccably Presented Home on an Expansive Landholding

Set on an impressive allotment of approximately 8,288m², this immaculately presented lifestyle property offers the perfect balance of space, comfort and country-style living, all within easy reach of Hamilton's amenities.

From the moment you arrive, the care and attention devoted to the property is immediately evident. Beautifully maintained both inside and out, the home presents in outstanding condition, providing a move-in-ready opportunity for families seeking room to grow, entertain and enjoy a relaxed lifestyle setting.

Designed with both comfort and style in mind, the home features a spacious open-plan living zone enhanced by floating timber flooring, a wood fire and split-system heating and cooling. Striking pitched feature ceilings create a wonderful sense of space while allowing an abundance of natural light to flow throughout. Large windows frame the surrounding gardens, and direct access to the outdoor alfresco area makes indoor-outdoor entertaining effortless.

At the heart of the home, the well-appointed kitchen showcases stone benchtops, quality stainless steel appliances and a practical layout that caters perfectly to family living and entertaining.

The generous master suite offers a private retreat, complete with a walk-in robe and a stylish ensuite featuring a double shower. Three additional bedrooms provide excellent

TYPE: For Sale

INTERNET ID: 300P197596

SALE DETAILS

\$820,000

CONTACT DETAILS

Hamilton

89 Gray Street
Hamilton, VIC
03 5551 6600

Rosi Egerton

0408 199 794

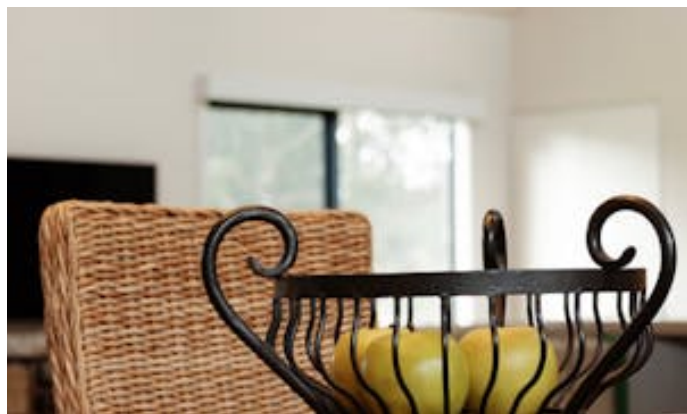
accommodation, with two benefiting from built-in robes. A central family bathroom includes a shower over the bath, while a separate toilet adds convenience for busy households.

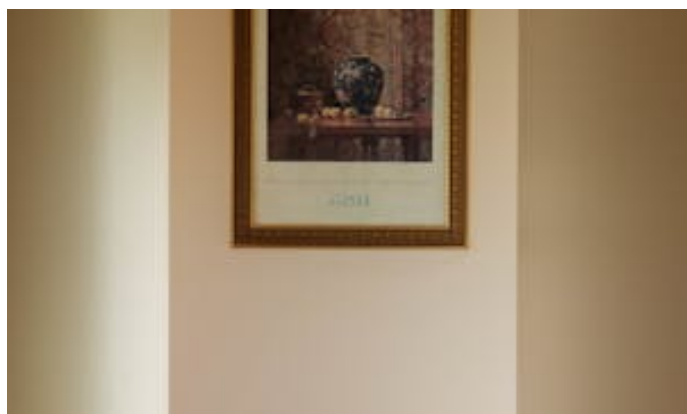
The functional laundry enjoys easy external access to the clothesline and surrounding outdoor areas, enhancing everyday practicality.

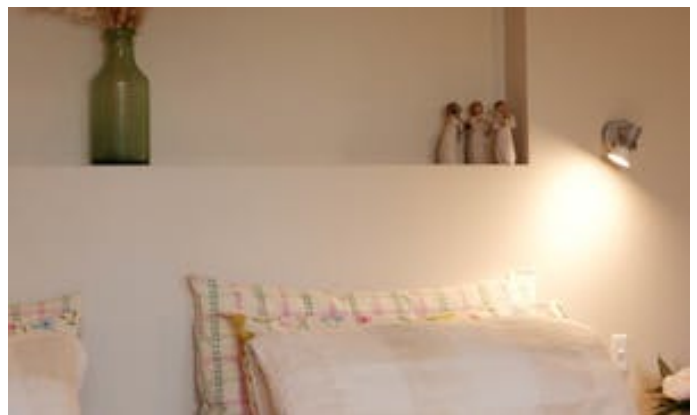
Outside, the property continues to impress with a substantial four-bay Colourbond shed complete with power and water connected, providing excellent storage, workshop space or room for vehicles and equipment. Surrounding the home are beautifully maintained, established gardens that create a picturesque and tranquil setting.

Offering the best of both worlds-peaceful country-style living with town conveniences close at hand-this exceptional property presents a rare opportunity to secure a quality family home in a sought-after edge-of-town location.

- Land Area 8,288.00 square metres
- Bedrooms: 4
- Bathrooms: 2
- Car Parks: 4
- Double carport
- Ensuite
- Floorboards











Scale in metres. Indicative only. Dimensions are approximate. All information contained herein is gathered from sources we believe to be reliable. However we cannot guarantee its accuracy and interested persons should rely on their own enquiries

14 Ackerleys Road, Hamilton