



## 108 Bradford Street, WHYALLA PLAYFORD, SA 5600

BRAND NEW & READY TO GO

Allotment size: 236m<sup>2</sup>

Council rates: \$1,683.81 per annum

Year built: 2026

Zoned: General Neighbourhood

Rental appraisal: Available upon request

Step into a fresh start with this brand-new home, thoughtfully designed with a timeless neutral colour palette that creates a warm, inviting atmosphere and provides the perfect canvas for your own style. Positioned in a convenient central location, you'll enjoy easy access to local shopping, services, schools, and everyday amenities, making day-to-day living effortless. Whether you're looking to move straight in or secure a quality investment, this newly completed home offers the perfect blend of comfort, convenience, and contemporary appeal.

Three carpeted bedrooms

**TYPE:** For Sale

**INTERNET ID:** 300P197697

**SALE DETAILS**

**\$490,000**

**CONTACT DETAILS**

**Elders Real Estate - Whyalla**

2 Patterson Street

Whyalla, SA

08 8644 4600

RLA: 62833

**Jake Pope**

0437 829 177

Master with ensuite and walk-in robe

Bedroom 2 and 3 with built-in robes

Main bathroom with adjoining powder room

Open plan living with split-system air conditioning & double glass sliding doors leading directly outside

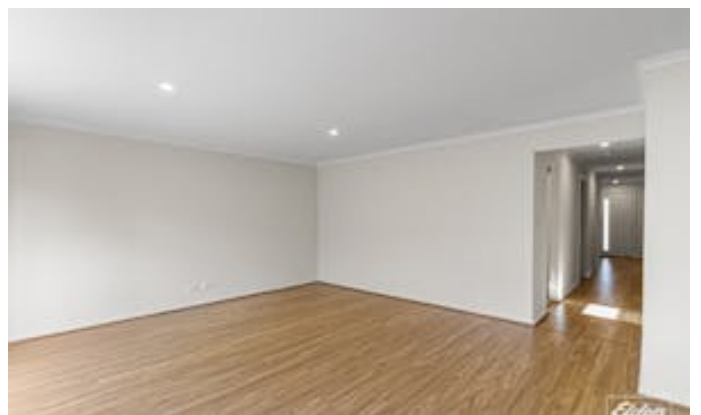
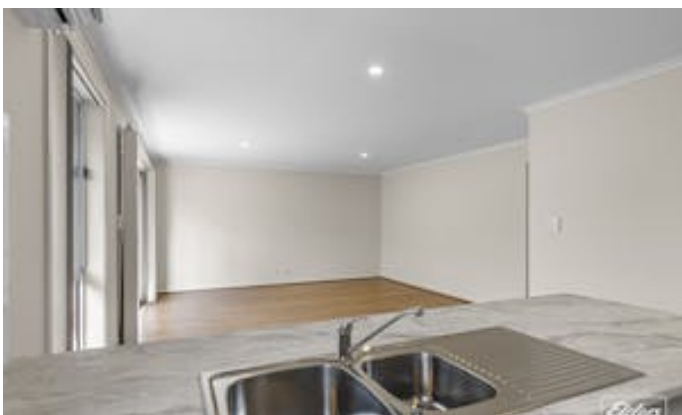
Modern kitchen with built-in storage and gas cooktop

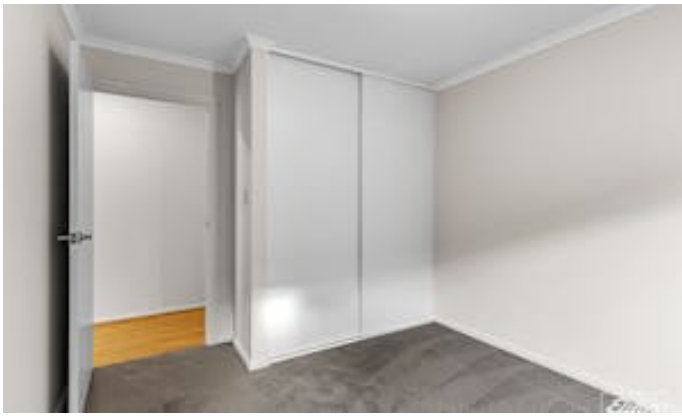
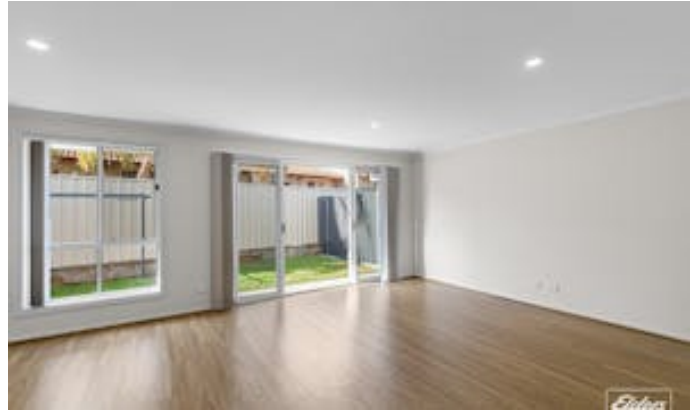
Garage with electric roller door, internal access and laundry area

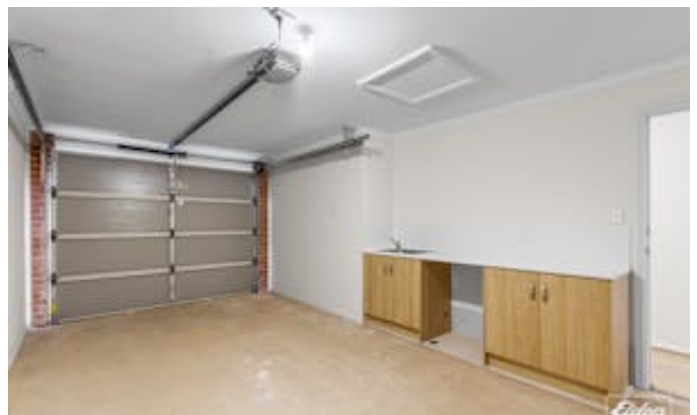
Rainwater tank & clothesline in rear yard

Disclaimer: We have in preparing this information used our best endeavours to ensure that the information contained herein is true and accurate but accept no responsibility and disclaim all liability in respect of any errors, omissions, inaccuracies, or misstatements that may occur. Prospective purchasers should make their own enquiries to verify the information contained herein. Elders Real Estate RLA62833

- Land Area 236.00 square metres
- Bedrooms: 3
- Bathrooms: 2
- Single garage

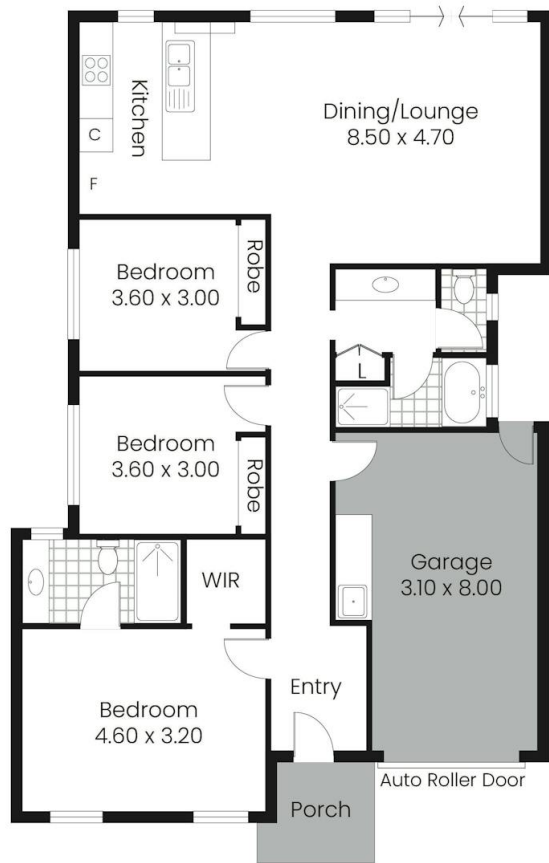








RWT



Living:	97.12sqm
Garage:	24.80sqm
Porch:	3.60sqm
Total:	125.52sqm

This drawing is for illustration purposes only. All measurements are internal and approximate. Details intended to be relied upon should be independently verified. Produced by Open2view.com

