



25 Gowrie Avenue, PUNCHBOWL, NSW 2196

Endless Potential on 638.6sqm – 10.47m frontage and 60.96m deep

Unlock the ultimate blank canvas with this rare offering, featuring an impressive 638.6sqm block in an affordable and sought-after neighbourhood. While the existing timber house has lived its life and is ready to be completely renovated or cleared, the true value lies in the substantial footprint. This expansive parcel of land offers boundless potential for a visionary buyer.

Enjoying exceptional lifestyle convenience, it's perfectly placed between Punchbowl Shopping Village and the busy hub of Bankstown's Town Centre. The bus route is practically on the doorstep and within easy access to Punchbowl train station and the upcoming Metro M1 Line. Schools and parks are nearby too.

The functional layout features three bedrooms, separate lounge room and dedicated dining area. The home includes an original kitchen and bathroom. A side driveway leads to a large, level backyard-perfect for extensions, a new build or investment potential (subject to council approval). This is an exceptional opportunity for first home buyers looking to enter the market, families planning their dream home, or investors seeking growth in a highly desirable location.

Other features: Close to Schools, Close to Shops, Close to Transport

TYPE: Auction

INTERNET ID: 300P197736

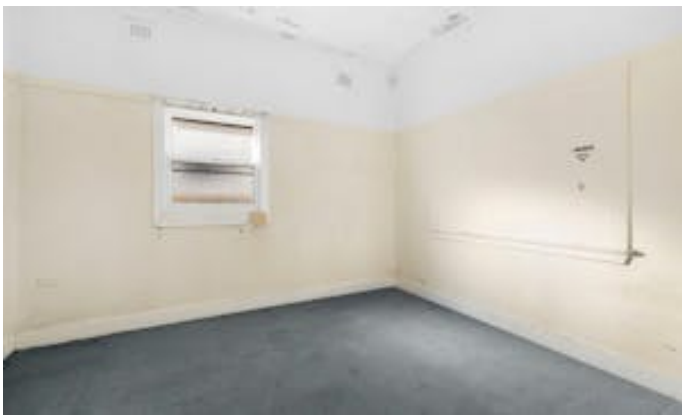
AUCTION DETAILS

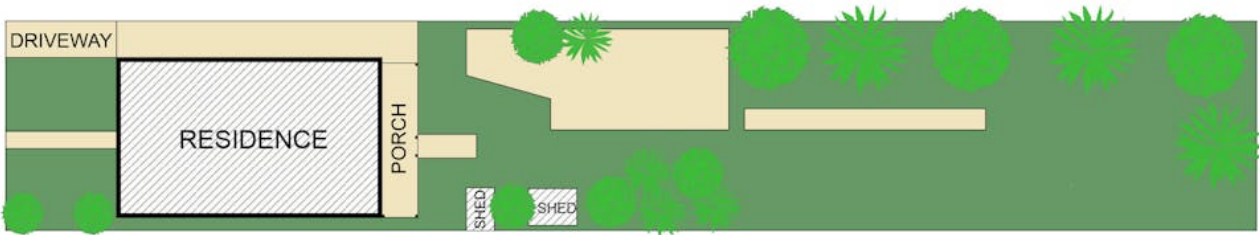
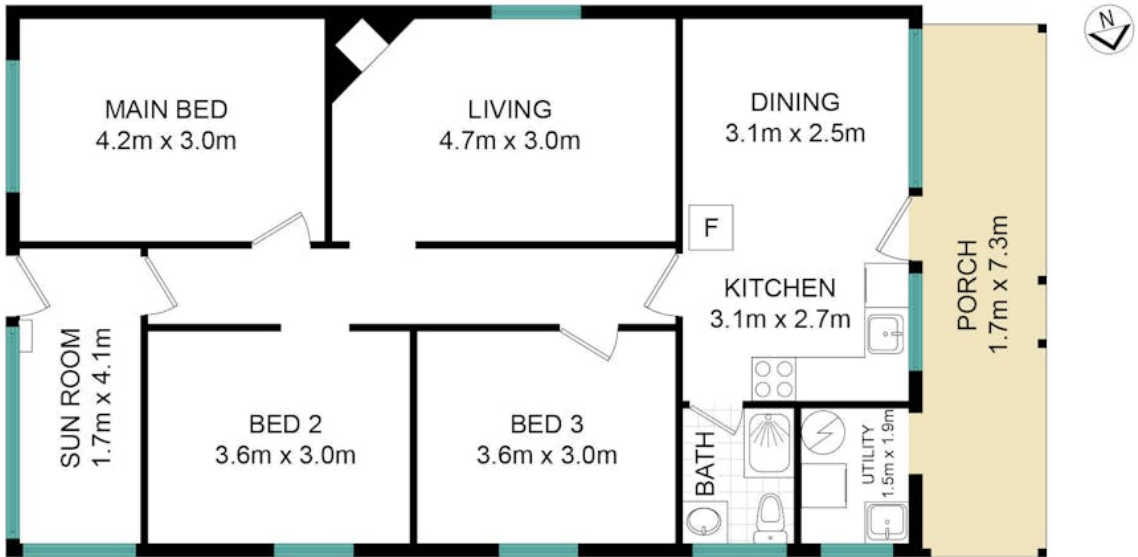
3:30am, Saturday July 11th, 2026

CONTACT DETAILS

,
Simon Hadzic
0418 297 287

- Land Area 638.00 square metres
- Bedrooms: 3
- Bathrooms: 1
- Car Parks: 2





25 GOWRIE AVENUE, PUNCHBOWL

Disclaimer: Information in this brochure is not independently verified. The vendor and agents disclaim liability, and accuracy is not guaranteed.

Prospective purchasers should exercise their judgment.