



24 Mounter Street, BOYNE ISLAND, QLD 4680

Private Acreage Retreat with Pool, Shed & Serene Bushland Backdrop

Set on an expansive 5,463m² allotment, this secluded and beautifully presented property offers the perfect balance of space, privacy, and modern comfort, all surrounded by tranquil bushland.

Accessed via a picturesque driveway and charming timber bridge, the home immediately evokes a sense of peaceful escape while remaining just minutes from local amenities.

Inside, a light-filled open-plan layout seamlessly connects the kitchen, living, and dining areas. The contemporary kitchen forms the heart of the home, featuring a generous island bench, ample storage, and a functional design perfect for both everyday living and entertaining.

Accommodation includes four well-sized bedrooms, each complete with floor-to-ceiling windows, built-in robes, and ceiling fans. The master suite is a true retreat, positioned at the front of the home and offering a spacious ensuite and walk-in robe. Large windows throughout invite natural light and frame peaceful leafy outlooks from every room.

TYPE: For Sale

INTERNET ID: 300P197798

SALE DETAILS

Offers over \$1,149,000!

CONTACT DETAILS

Jay Murray-Lowe
0497 508 122

The family bathroom is stylish and well-appointed, showcasing clean finishes and a fresh, modern feel.

A standout feature is the full-length front verandah - the ideal spot to enjoy your morning coffee or unwind in the afternoon while taking in the serene surroundings. Outdoors, a sparkling in-ground pool creates a private oasis, complemented by a huge timber deck designed for relaxed entertaining.

The expansive grounds provide ample space for children, pets, and future possibilities.

Additional features include a large three-bay shed, perfect for storage, a workshop, or secure vehicle accommodation, along with a wide-access driveway ideal for boats, caravans, and additional vehicles.

Offering a rare combination of privacy, space, and lifestyle, this exceptional acreage retreat delivers peaceful living without compromising on convenience - all within easy reach of shops, schools, and the Boyne River.

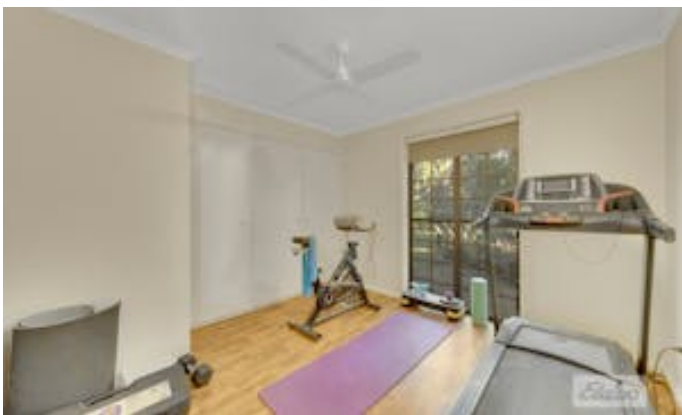
Council Rates- Approx \$4,600 Per Annum

This lifestyle property is a rare opportunity in the Gladstone market, call Jay Murray-Lowe today to discuss further!

Other features: Bush Retreat

- Land Area 5,463.00 square metres
- Bedrooms: 4
- Bathrooms: 2
- Double garage
- Single carport
- Ensuite









24 Mounter Street,
Boyne Island

Floor plan is for illustrative purposes only and is not to scale. All information provided is a guide only and should be independently verified.