



## 25a Crieff Street, ASHBURY, NSW 2193

### A Rare Opportunity to Create Something Special

This versatile property presents a rare opportunity on a generous 556.4sqm approx. parcel with an impressive 12-metre frontage.

Currently configured as two semi-attached residences-one offering two bedrooms and the other a one-bedroom layout-it provides immediate rental income or flexible living arrangements.

The true appeal lies in its future potential. With no individual conservation restrictions, there is scope to redevelop or create a brand-new home tailored to your vision (STCA). The substantial landholding offers a prime foundation in a highly sought-after Inner West setting.

Positioned in a quiet, tree-lined street close to parklands, quality schools and transport, this is an outstanding opportunity to secure a property with genuine upside and flexibility.

- Land Area 556.40 square metres
- Bedrooms: 3

**TYPE:** For Sale

**INTERNET ID:** 300P197844

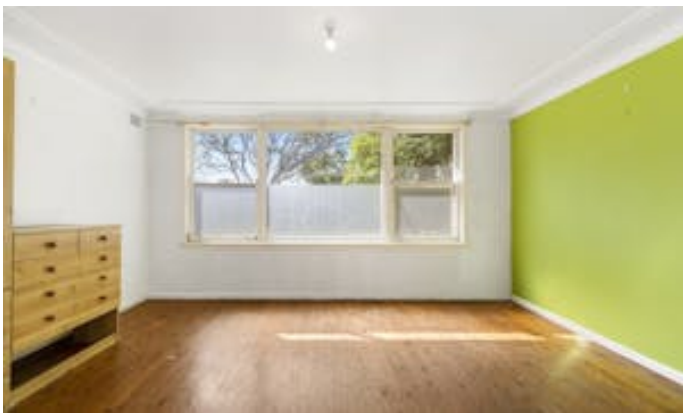
**SALE DETAILS**

**Forthcoming Auction**

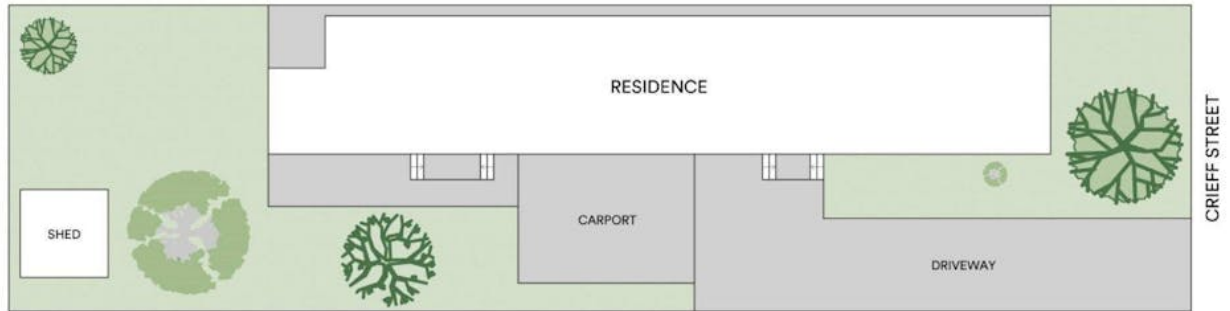
**CONTACT DETAILS**

**Raby Tam**  
0410 936 682

- Bathrooms: 2
- Car Parks: 2
- Single carport







SITE PLAN



FLOOR PLAN

## 25A Crieff Street, Ashbury

Disclaimer: Information in this brochure is not independently verified. The vendor and agents disclaim liability, and accuracy is not guaranteed. Prospective purchasers should exercise their judgment.