

16 New Landing Way, RENMARK, SA 5341

Blue Ribbon Location – Low Maintenance Living Close to the River Murray

Offered to the market for the very first time since its construction in 2015, this well-presented four-bedroom, two-bathroom residence delivers the perfect combination of comfort, convenience and low-maintenance living in one of Renmark's most sought-after blue ribbon locations.

Positioned on a manageable 519m² allotment, this home is ideally suited to busy families, downsizers seeking an easy-care lifestyle, or investors looking to secure a quality property in a highly desirable area.

Just minutes from the stunning River Murray and within easy reach of a scenic walking track leading directly into the heart of Renmark, you'll enjoy convenient access to caf  s, bakeries, restaurants, hotels, clubs and an array of charming retail shops.

Inside, the thoughtfully designed floorplan offers spacious living areas with durable tiled flooring, while all four bedrooms feature soft carpeting for added comfort. The modern kitchen is well-equipped with quality appliances, including a dishwasher, and provides ample storage and bench space for everyday living.

Three bedrooms include built-in robes, while the master suite enjoys the added benefit of a private ensuite. Year-round comfort is assured with ducted reverse cycle air conditioning complemented by ceiling fans throughout the home.

TYPE: For Sale

INTERNET ID: 300P197925

SALE DETAILS

\$780,000 - \$820,000

CONTACT DETAILS

Elders Riverland

2 East Terrace

LOXTON, SA

8588 6066

RLA: 62833

Karen Nash

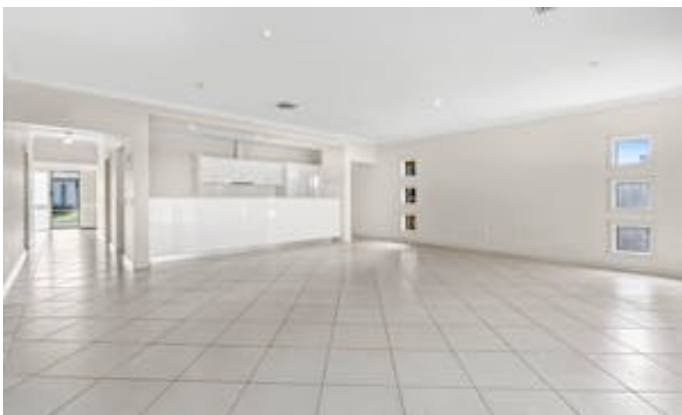
0437 236 669

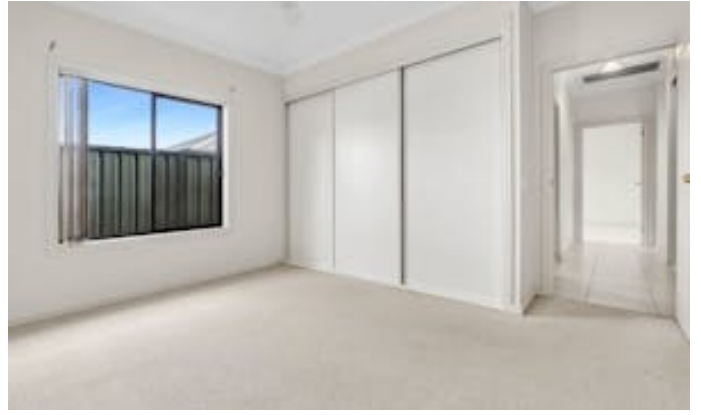
Outside, the property continues to impress with a double carport featuring automatic roller doors, a covered entertaining area perfect for hosting family and friends, low-maintenance gardens, a rainwater tank and a handy garden shed.

A fantastic opportunity to secure a quality home in a tightly held location, offering lifestyle, convenience and exceptional value.

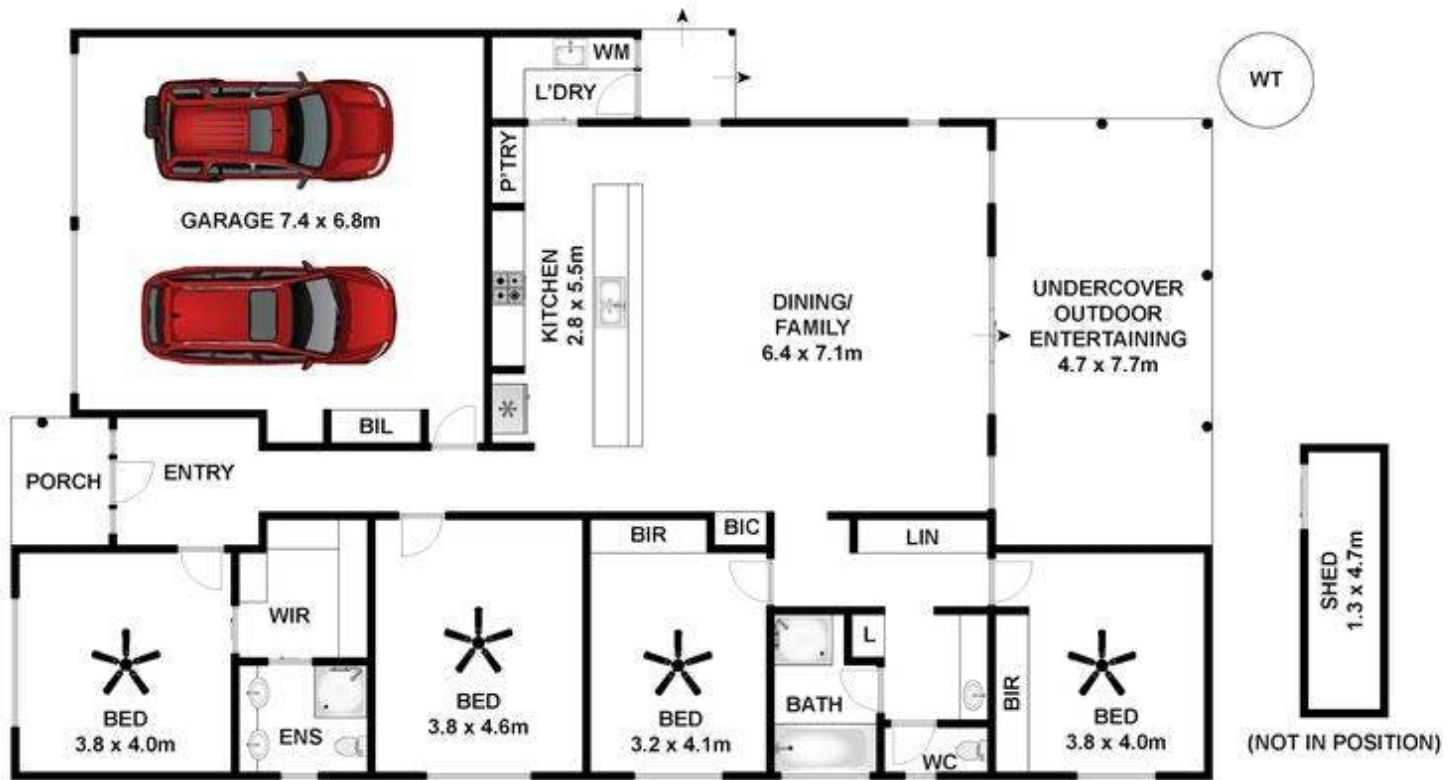
Disclaimer: In preparing this information we have used our best endeavours to ensure details contained herein are true and accurate, however we accept no responsibility and disclaim all liability in respect of any errors, omissions or inaccuracies. Prospective purchasers should make their own enquiries to verify the information contained herein.
RLA62833

- Land Area 519.00 square metres
- Bedrooms: 4
- Bathrooms: 2
- Car Parks: 2









Approx House Area 236m²

Whilst bwrn.com.au has made every attempt to ensure the accuracy of the floor plan contained here, measurements are approximate and no responsibility is taken for any error, omission, or mis-statement. This plan is for illustrative purposes only.

16 New Landing Way, Renmark

