



15 Grevillea Street, WHYALLA STUART, SA 5608

FULLY RENOVATED & MOVE-IN READY

Allotment size: 500m²

Council rates: \$1,967.46 per annum

Water supply & sewer rates: approx \$165 per quarter

Year built: 1972

Zoned: General neighbourhood

Rental appraisal: Available upon request

Positioned in a convenient and family-friendly location, 15 Grevillea Street, Whyalla Stuart offers easy access to local schools, parks, shopping facilities, and public transport, making everyday living a breeze. This beautifully renovated maisonette is completely move-in ready, showcasing modern and stylish finishes throughout with all the hard work already done for you. Ideal for investors seeking a low-maintenance addition to their portfolio, small families looking for a comfortable home, or downsizers wanting quality without compromise. Combining contemporary living with a fantastic location close to essential amenities, this is an opportunity not to be missed.

TYPE: For Sale

INTERNET ID: 300P197991

SALE DETAILS

\$359,000

CONTACT DETAILS

Elders Real Estate - Whyalla

2 Patterson Street

Whyalla, SA

08 8644 4600

RLA: 62833

Jake Pope

0437 829 177

Welcoming entry to lounge complete with split-system air conditioning for year-round comfort

Renovated modern kitchen and meals featuring an electric cooktop and dishwasher

Floating floorboards throughout the home

Three generously sized bedrooms

Master bedroom with sliding door access to a versatile sunroom, ideal as a walk-in robe, home office, or retreat

Updated tiled bathroom with a separate bath and walk-in shower

Stylish modern laundry with a separate toilet and convenient external access

Built-in hallway shelving

Roller shutters to the front windows providing added privacy, security, and energy efficiency

Landscaped, low maintenance front and rear gardens

Colorbond verandah, perfect for year-round outdoor entertaining

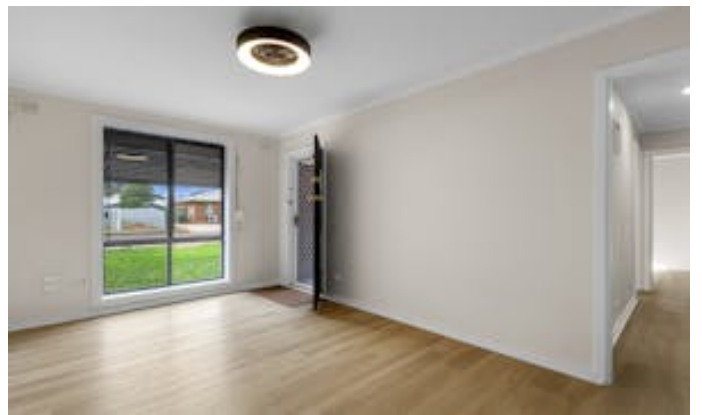
Shedding with roller door access, offering additional parking or storage options

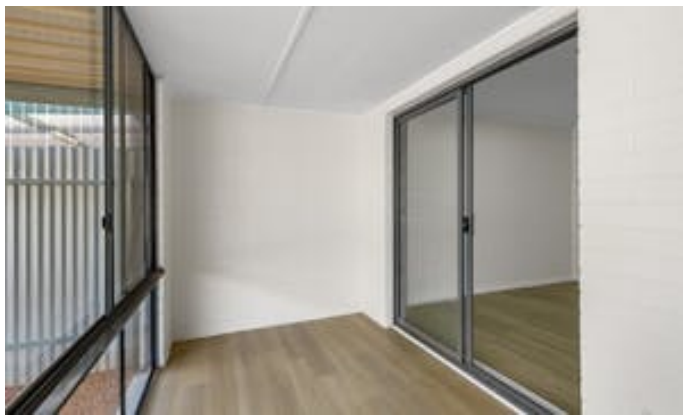
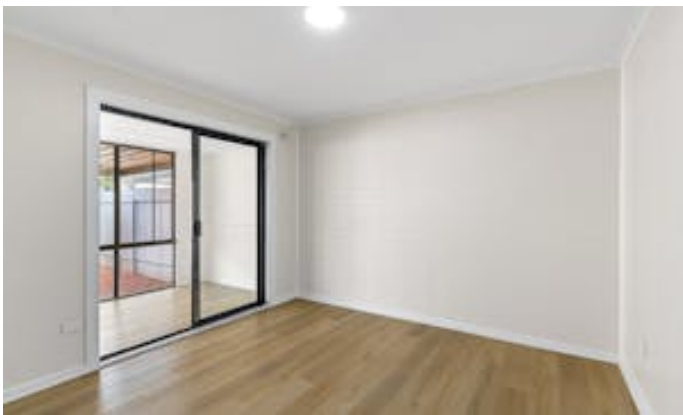
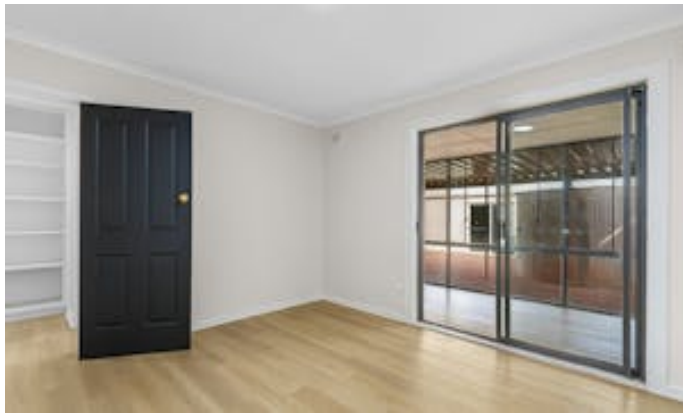
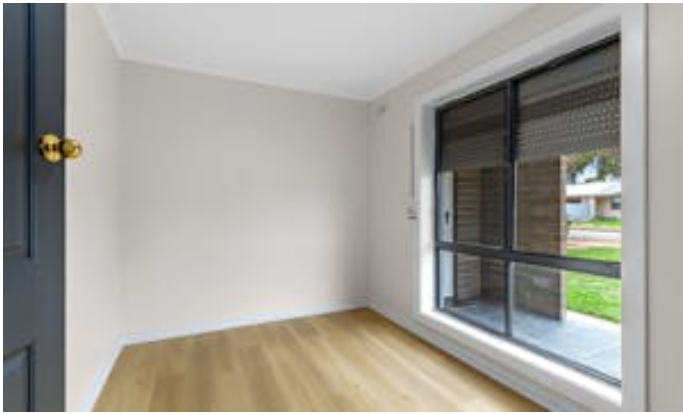
Carport with rollerdoor

Solar system to help reduce energy costs

Disclaimer: We have in preparing this information used our best endeavours to ensure that the information contained herein is true and accurate but accept no responsibility and disclaim all liability in respect of any errors, omissions, inaccuracies, or misstatements that may occur. Prospective purchasers should make their own enquiries to verify the information contained herein. Elders Real Estate RLA62833

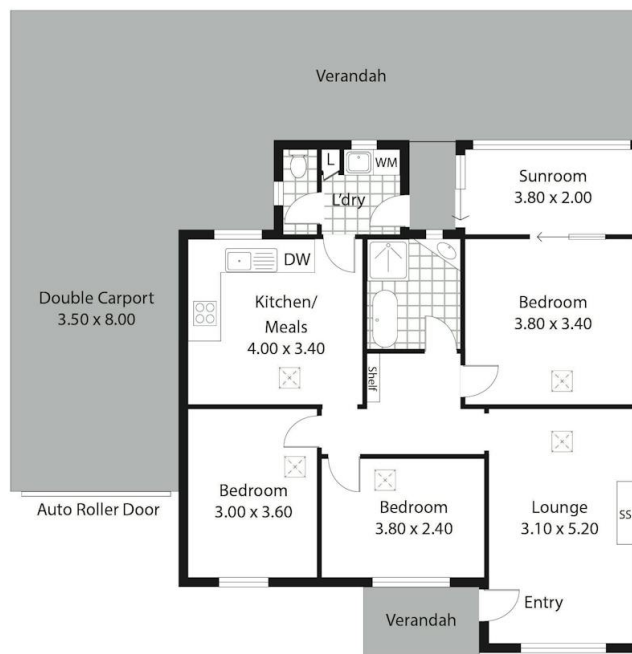
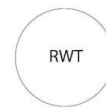
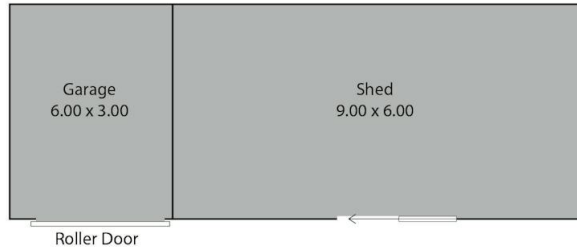
- Land Area 500.00 square metres
- Bedrooms: 3
- Bathrooms: 1
- Single garage
- 3 car carport











Living:	93.02sqm
Verandah/Carport:	73.88sqm
Shed/Garage:	72.00sqm
Total:	238.90sqm

This drawing is for illustration purposes only.
 All measurements are internal and approximate.
 Details intended to be relied upon should be independently verified.
 Produced by Open2view.com

