



5 Enfield Terrace, NORTHAM, WA 6401

Country Charm Meets Town Convenience

Step into the charm of yesteryear with this character-filled 1930s brick and iron home, perfectly positioned on a generous 854m² block in a quiet, small street just moments from the heart of town.

Offering 3 bedrooms and 1 bathroom, 5 Enfield Terrace combines comfort, warmth, and timeless appeal.

This is far from your standard 3 x 1 - with its farmhouse-style charm, solid brick construction, and inviting feel, this home offers character that is increasingly hard to find.

Inside, the country-style kitchen features crisp white cabinetry, electric cooking, and a welcoming atmosphere that feels instantly like home.

Timber floorboards through the main living areas enhance the home's warmth and character, while the bedrooms are fitted with carpets for added comfort. A split system air conditioning unit helps keep the home comfortable year-round.

TYPE: For Sale

INTERNET ID: 300P198010

SALE DETAILS

Offers Over \$489,000

CONTACT DETAILS

Elders Perth

Level 2, 195 Great Eastern
Highway
BELMONT, WA
08 9422 2444

Sharon Johnson
0418 958 651

The bathroom is neat and functional, complete with a glass corner shower and vanity unit.

Outside, the rear yard includes a decent-sized garage with convenient driveway access, providing practical storage or workspace options.

Location is another standout feature. Situated only one street back from the beautiful Avon River and within walking distance to Northam's town centre, you can enjoy the convenience of nearby amenities while still embracing a relaxed country lifestyle.

Whether you're a first home buyer looking to enter the market and take advantage of government first home buyer schemes, or an investor searching for a solid addition to your portfolio, this property deserves attention. Northam continues to experience strong rental demand and low vacancy rates, making 5 Enfield Terrace an attractive rental investment opportunity.

For FIFO buyers, the location is particularly appealing - just 78km to Midland and approximately 85km to Perth Airport. With a straightforward drive along Great Eastern Highway, getting to the airport is simple and convenient.

Character, comfort, location, and potential - 5 Enfield Terrace is ready for its next chapter with new owners to call it home.

All inquiries to exclusive selling agents Elders Real Estate

Sharon Johnson | 0418 958 651 | Sharon.Johnson@elders.com.au

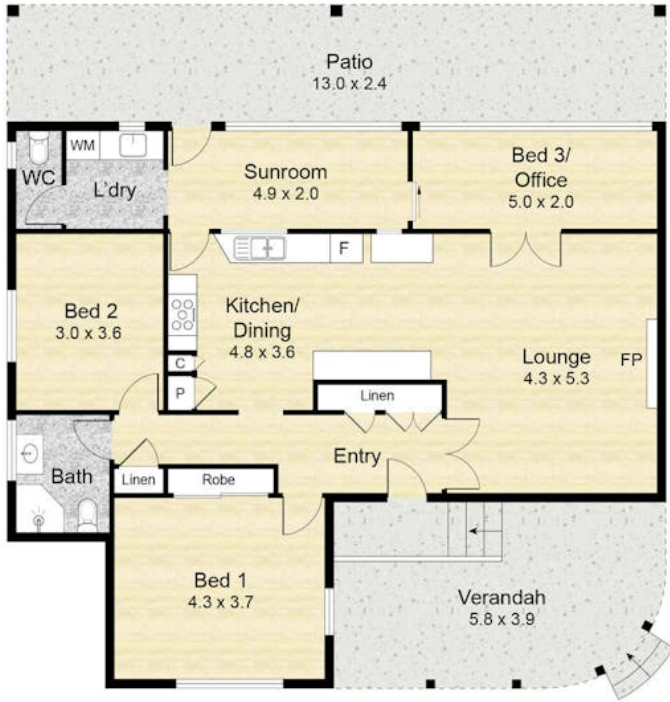
- Land Area 854.00 square metres
- Building Area: 127.00 square metres
- Bedrooms: 3
- Bathrooms: 1
- Car Parks: 1
- Single garage



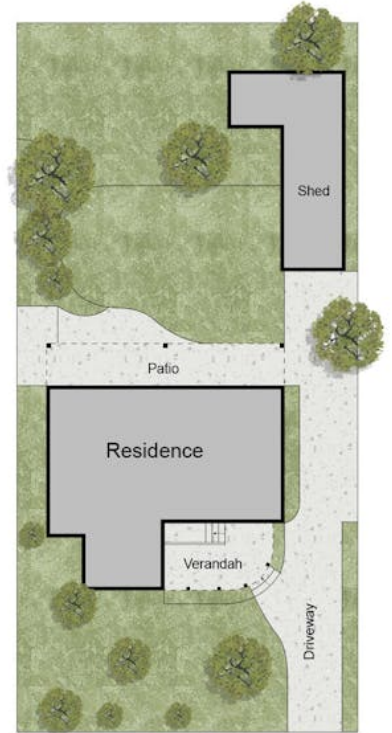
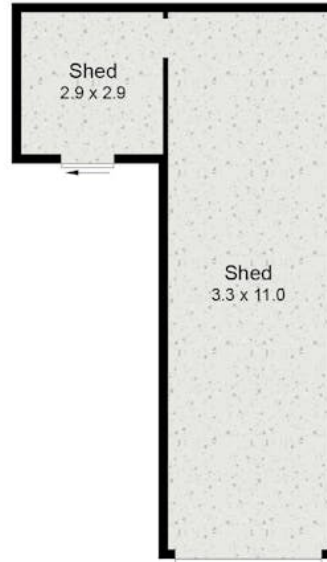








Ground Floor



Site Plan

Internal: 115.3 sqm
 External: 103.1 sqm
Total: 218.4 sqm

The site and floorplan are not to scale. Dimensions are approximate.