

## 68 Emery Avenue, WOODROFFE, NT 0830

### PERFECT FAMILY HOME ON EMERY

This immaculately presented modern family home is nestled in mature tropical gardens that create your own private sanctuary, ideally located in a popular family-friendly suburb. Just walking distance to your choice of quality schools and minutes to Palmerston Shopping Centre.

- Unfurnished
- Large open plan lounge dining area with a very large kitchen, ample amount of cupboard space with a dishwasher
- Three bedroom, two bathroom property with stunning pool the perfect place to spend long afternoons
- Fully tiled and air conditioned throughout
- Garden shed to side yard with fencing to rear/side yard
- Very secluded back yard great for kids in a great location in Palmerston
- Pets are negotiable

**TYPE:** For Rent

**INTERNET ID:** 300P198013

#### RENTAL DETAILS

**Rent / Lease:**

**\$720 per week**

#### CONTACT DETAILS

**Darwin**

70 Smith Street

DARWIN, NT

08 8946 0500

**Sharon Clough**

0409 271 969

- This property is close to the Bakewell shopping centre and schools

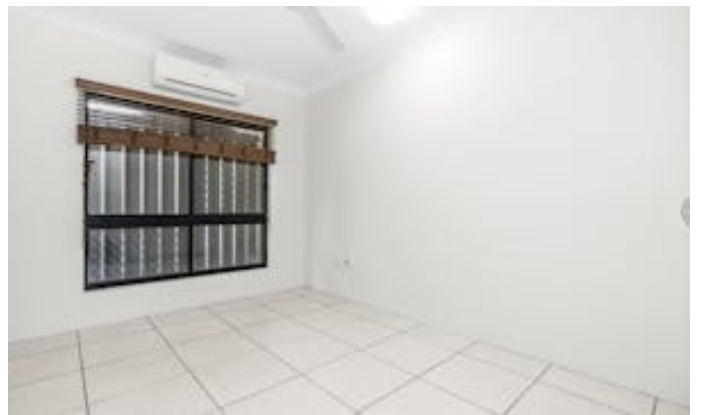
- Available Now!

How to apply? A link will be sent via 2Apply once the property has been inspected.

Elders does NOT accept 1FORM applications. Please leave your details to register for the next available inspection.

Other features: Close to Schools, Close to Shops, Close to Transport, Pool

- This property is: Unfurnished
- Pets: No
- Available Now
- Bedrooms: 3
- Bathrooms: 2
- Double carport









68 EMERY AVENUE, WOODROFFE

DISCLAIMER

PLANS SHOWN ARE FOR MARKETING PURPOSES ONLY. ALL DIMENSIONS ARE APPROXIMATE AND NOT TO SCALE. THEY ARE SUBJECT TO ERRORS AND INACCURACIES AND NO LIABILITY WILL BE ACCEPTED. INTERESTED PARTIES SHOULD MAKE THEIR OWN INQUIRES.