

## 22 Putting Rise, NORTHAM, WA 6401

### Brand New Luxury Living in Putting Rise

Be the very first to call this stunning brand new home your own. Positioned in one of Northam's most desirable estates, 22 Putting Rise offers modern comfort, stylish finishes, and a move-in ready lifestyle with all the hard work already done.

Designed for effortless family living, this beautifully finished home features 4 bedrooms, 2 bathrooms, a double garage, and multiple living zones, combining practicality with contemporary style.

At the heart of the home is a spacious open-plan kitchen, dining, and family area, thoughtfully designed for everyday living and entertaining. The gourmet chef's kitchen is sure to impress, featuring premium appliances including an oven and induction cooktop, sleek Vitrum® benchtops, a central island breakfast bar, soft-close cabinetry, and a generous walk-in pantry.

The spacious master suite provides a private retreat, complete with a large dressing room and well-appointed ensuite with separate toilet. The additional bedrooms are all generously sized and include built-in robes with sliding doors, making them ideal for growing families, guests, or a home office setup.

**TYPE:** For Sale

**INTERNET ID:** 300P198199

**SALE DETAILS**

**Offers over \$829,000**

**CONTACT DETAILS**

**Elders Perth**

Level 2, 195 Great Eastern  
Highway

BELMONT, WA

08 9422 2444

**Sharon Johnson**

0418 958 651

Adding even more flexibility is a separate activity room, perfect as a children's playroom, media room, or second lounge.

This complete home package has been finished to an exceptional standard and includes:

- Fully painted interior and exterior
- Air-conditioning for year-round comfort
- High-quality vinyl plank flooring to main living areas
- Plush carpets to all bedrooms
- Skirting boards fitted throughout
- Fitted blinds to bedrooms and living areas
- LED lighting throughout
- Advanced heat pump hot water system
- NBN readiness and multiple TV points
- 705m land size

The bathrooms and laundry have been designed with both style and function in mind, featuring hobless showers, semi-frameless shower screens, quality mixer tapware, Vitrum® benchtops, and practical cabinetry.

Outside, enjoy easy-care living with a landscaped front yard complete with irrigation, Colourbond fencing, Colourbond roofing, and concrete finishes to the garage, driveway, and alfresco/outdoor living areas.

Built by respected Western Australian builder Ross Squire Homes, with over 40 years of experience delivering quality homes, this property offers confidence, quality craftsmanship, and outstanding value.

Located in the thriving regional hub of Northam, just over an hour from Perth, you'll enjoy a peaceful lifestyle surrounded by natural beauty, with schools, parks, shopping, and the scenic Avon River all close by.

Whether you're upsizing, relocating, or simply seeking a stylish low-maintenance home, 22 Putting Rise presents an exceptional opportunity to secure a brand new residence in a growing and highly desirable location.

Move straight in and start enjoying everything this beautiful home has to offer.

All inquiries to exclusive selling agents Elders Real Estate

Sharon Johnson | 0418 958 651 | Sharon.Johnson@elders.com.au

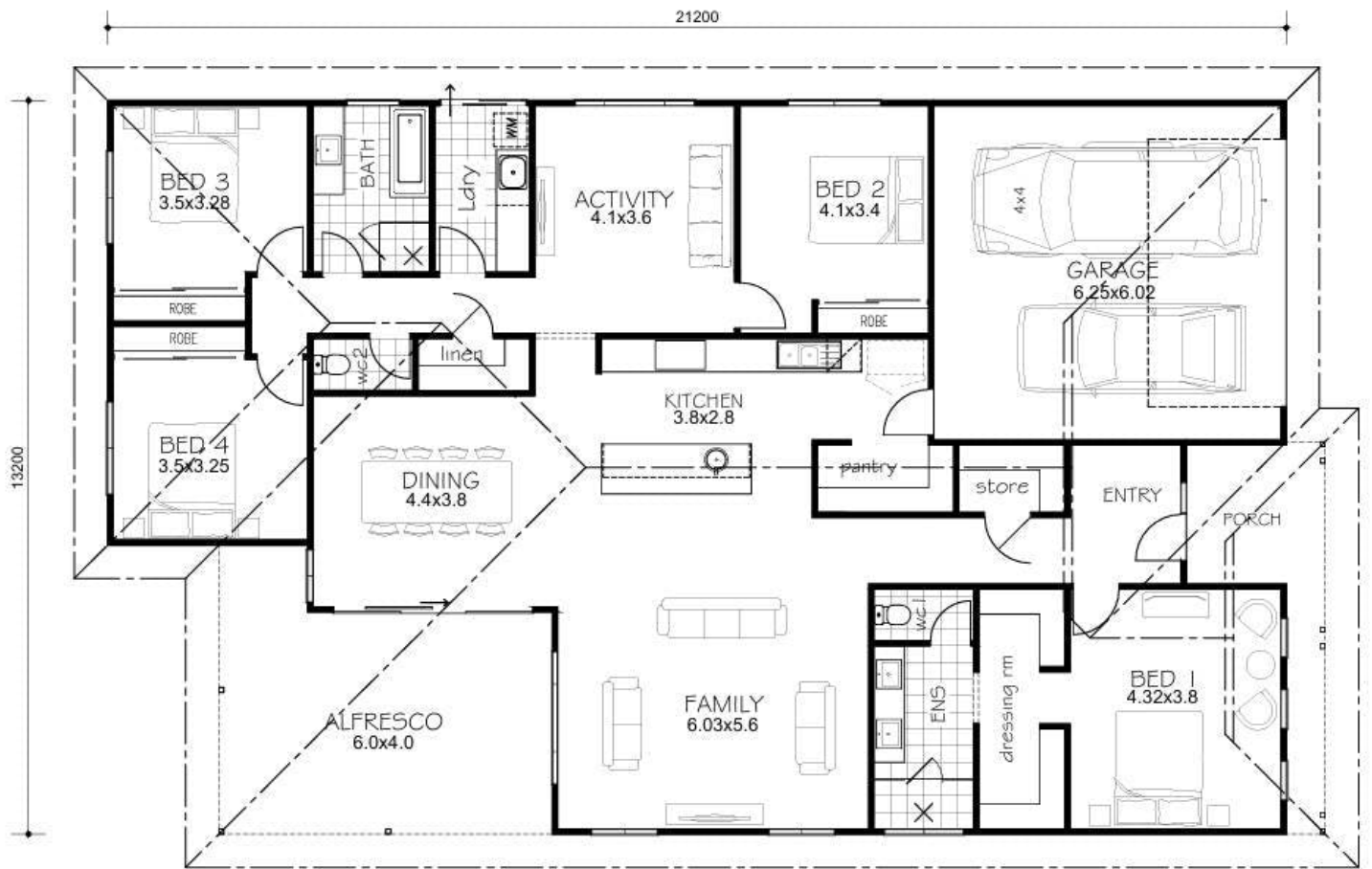
- Land Area 705.00 square metres
- Building Area: 239.00 square metres
- Bedrooms: 4
- Bathrooms: 2
- Car Parks: 1
- Single garage











HOUSE/GARAGE floor area 239 m2  
 PORCH/ALFRESCO floor area 35.36 m2

## 22 Putting Rise