



## 3019 Castra Road, NIETTA, TAS 7315

### More Than a Home... A Lifestyle

Are you dreaming of escaping the hustle and bustle and embracing a slower pace of life? Welcome to 3019 Castra Road, Nietta, where peace, privacy and nature come together in perfect harmony. Set amongst Tasmania's breathtaking hinterland, wake to the sounds of native birdlife, unwind beside the flowing creek and immerse yourself in the beauty of your own private sanctuary. Whether you're seeking a permanent tree change, a weekend escape or the ultimate lifestyle property, this is a rare opportunity to experience country living at its finest.

#### Internal Features

- Spacious open plan kitchen, living and dining area
- Kitchen with ample bench space and generous storage
- 3 comfortable bedrooms with peaceful rural outlooks
- Additional office/study room
- Central family bathroom designed for everyday practicality

**TYPE:** For Sale

**INTERNET ID:** 300P198216

#### SALE DETAILS

**Best Offers Over  
\$635,000**

#### CONTACT DETAILS

**Elders Real Estate Burnie**  
72-74 Wilson Street  
Burnie, TAS  
03 6432 2311

**Jorja O'Halloran**  
0409 039 608

Additional separate toilet

Double glazed windows in living/kitchen and bedrooms

Jotul wood heater providing warmth throughout the cooler months

Additional Panasonic reverse cycle system for convenience

New flooring and painted throughout

Large windows framing the surrounding countryside and bringing the outdoors in

Functional floor plan suited to families, couples or those seeking a relaxed lifestyle

#### External Features

Three bay 8.0mx9.0m Shed

Recently upgraded roof

Generous parcel of land offering privacy and space

Beautiful rural surrounds with picturesque views across the countryside

Plenty of room for sheds, animals or hobby farming (STCA)

Ideal for those seeking a self-sufficient or country lifestyle

Located in the peaceful community of Nietta, this property offers an idyllic country lifestyle while remaining within driving range of Ulverstone and the spectacular Cradle Coast region. With walking trails, pristine rivers, lakes and national parks nearby, every day feels like a getaway. If you've been searching for space, tranquillity and the opportunity to embrace the very best of rural Tasmania, 3019 Castra Road is one not to be missed.

**DISCLAIMER:** While Elders Real Estate Burnie has taken every care to verify the accuracy of the details in this advertisement, we cannot guarantee its correctness. Prospective buyers or tenants need to take such action as is necessary, to satisfy themselves of any pertinent matters

- Land Area 2.0234 hectares
- Building Area: 120.00 square metres
- Bedrooms: 3
- Bathrooms: 1
- Car Parks: 5

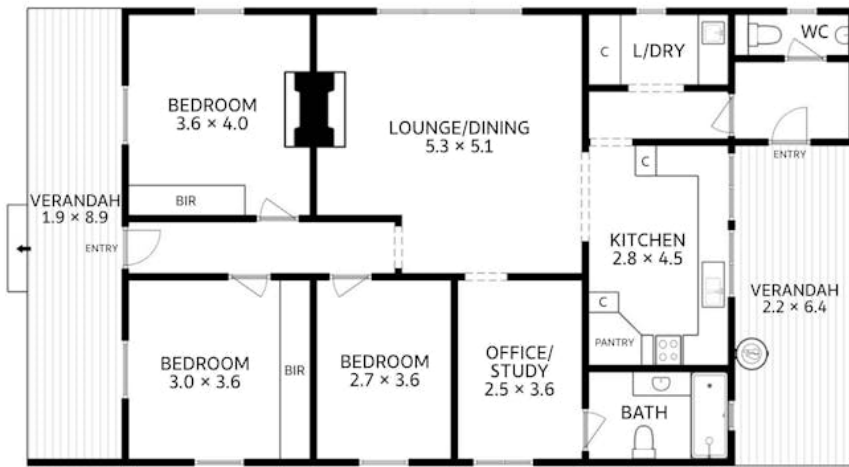




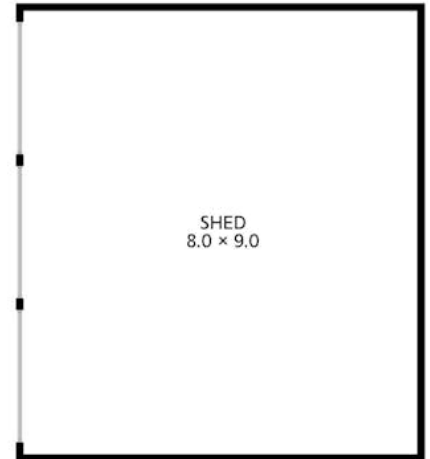




3019 Castra Road  
Nietta



Approx. Floor Area 115 sq m  
(excluding verandahs and shed)



(NOT IN EXACT LOCATION)

All measurements are internal and approximate.  
This plan is a sketch for illustration, not valuation.

