

## 101 Kings Road, PIMLICO, QLD 4812

Renovators Dream!! 101 Kings Road Pimlico - Auction 25 July 2026 - Must Be Sold

Auction 25 July 2026 Must Be Sold

Set in a prime high exposure position along one of Townsville's busiest and most strategic roads, this property presents an exceptional opportunity for renovators, builders, and commercial minded buyers. Formerly a four-bedroom low set brick home, it now offers a rare blank canvas ready for transformation.

The generous 653sqm allotment provides outstanding scope for a full renovation, rebuild, or future commercial adaptation (STCA). With the Mater Hospital, major shopping centers, schools, and key arterial routes all close by, the location delivers both convenience and long term value.

Whether you're a seasoned flipper seeking your next project or a buyer exploring the potential for office or consulting space down the track (pending council approval), this site offers serious upside in a tightly held, high visibility corridor.

Key Features:

The particulars contained herein are supplied for information only and shall not be taken as a representation in any respect on the part of the vendor or its agent. Interested parties should contact the nominated person or office for full and current details.

**TYPE:** Auction

**INTERNET ID:** 300P198297

### AUCTION DETAILS

10:00am, Saturday July 25th, 2026

### CONTACT DETAILS

,  
**Katherine Roy**  
0411 671 061

Opportunity to redesign, renovate, or redevelop to your vision

High exposure location ideal for future commercial consideration (STCA)

653sqm allotment with excellent side access

Former layout included 4 bedrooms, single carport, internal laundry

Moments from the Mater Hospital, major retail hubs, schools, and transport

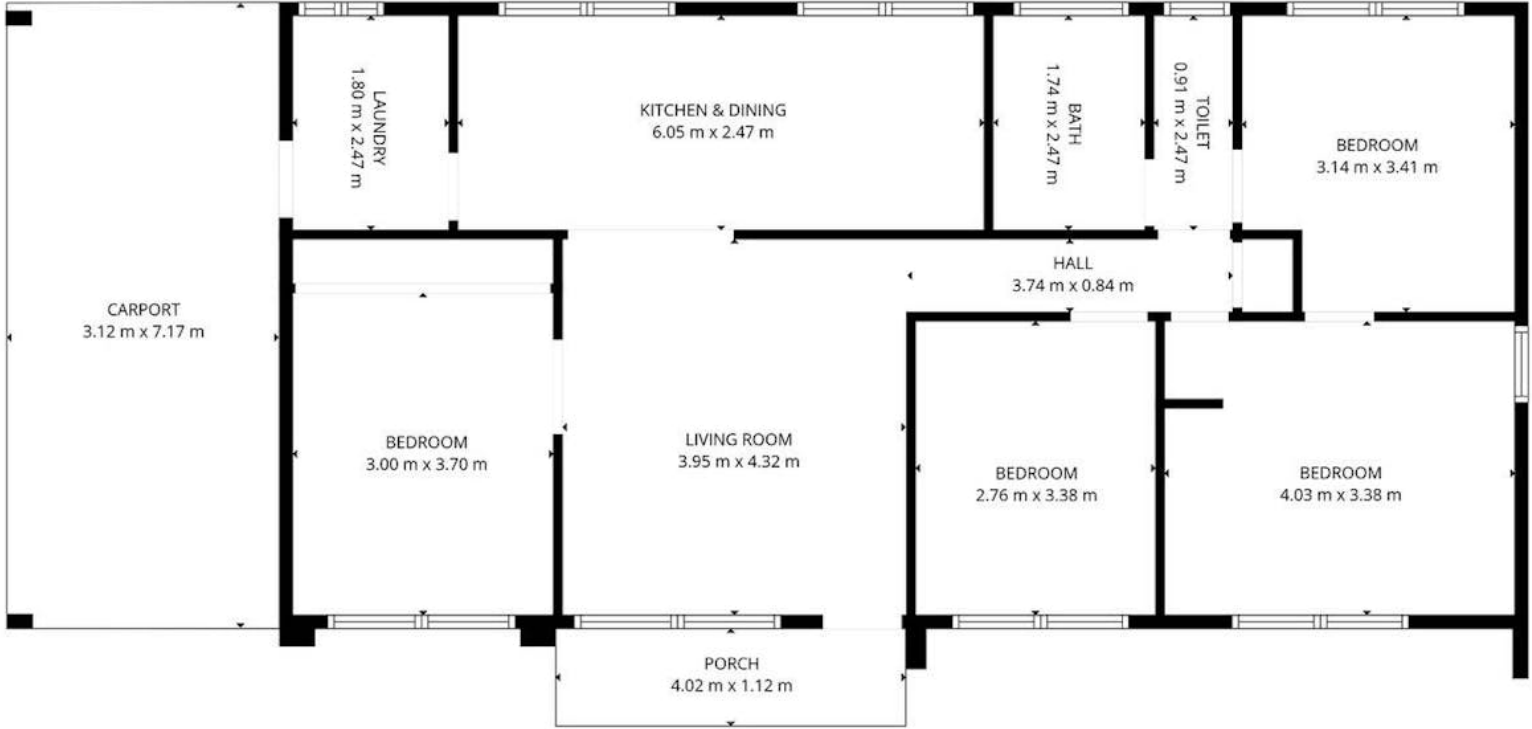
Auction 25 July 2026 - Owner committed to selling

For more information, contact Principal Sales Agent - Katherine Roy - from Elders Real Estate Townsville on 0411 671 061 or email [katherine.roy@elders.com.au](mailto:katherine.roy@elders.com.au)

Other features: Close to Schools, Close to Shops, Close to Transport

- Land Area 653.00 square metres
- Building Area: 126.00 square metres
- Bedrooms: 4
- Bathrooms: 1
- Car Parks: 1





**TOTAL: 97 m<sup>2</sup>**  
1st floor: 97 m<sup>2</sup>  
EXCLUDED AREAS: CARPORT: 23 m<sup>2</sup>, PORCH: 5 m<sup>2</sup>, WALLS: 6 m<sup>2</sup>

FLOOR PLAN CREATED BY CUBICASA APP. MEASUREMENTS DEEMED HIGHLY RELIABLE BUT NOT GUARANTEED.