

25A Harden Street, WAIKERIE, SA 5330

Ideally suited to those looking to downsize

The delightful brick veneer home was built new in 1998 and sits on a 441 m2 allotment. The home has a lockable garage under main roof and offers three generous bedrooms, the master with walk in robe and direct access to the recently refitted two-way bathroom.

Quality is the key with a spacious open plan living area which incorporates a well-appointed chef's kitchen. Sliding glass doors open on to the two separate court yards both of which are paved and make for great alfresco dining experiences.

The house has a solar system feeding into the grid, a new rainwater tank with pressure pump and mains pressure hot water system. The ducted reverse cycle air conditioning unit makes for comfortable year-round living. With a securely fenced rear yard, there is absolutely nothing to spend, be quick to enjoy town living in this idyllic location.

Disclaimer:

We have in preparing this information used our best endeavours to ensure that the information contained herein is true and accurate but accept no responsibility and disclaim all liability in respect of any errors, omissions, inaccuracies, or misstatements

The particulars contained herein are supplied for information only and shall not be taken as a representation in any respect on the part of the vendor or its agent. Interested parties should contact the nominated person or office for full and current details.

TYPE: For Sale

INTERNET ID: 300P198356

SALE DETAILS

\$529,000

CONTACT DETAILS

Elders Riverland

2 East Terrace

LOXTON, SA

8588 6066

RLA: 62833

Wayne Kleemann

0417 000 988

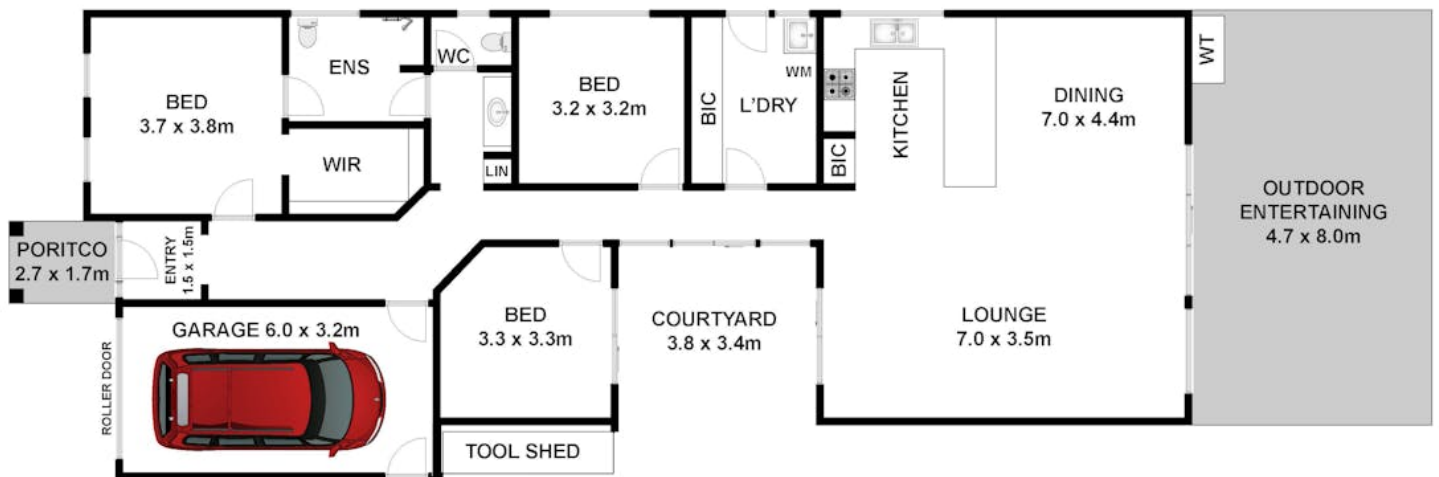
that may occur. Prospective purchasers should make their own enquiries to verify the information contained herein. Elders Real Estate RLA62833

Other features: Close to Schools

- Land Area 441.00 square metres
- Bedrooms: 3
- Bathrooms: 1
- Single garage







Approx House Area 163m²

Whilst bwrm.com.au has made every attempt to ensure the accuracy of the floor plan contained here, measurements are approximate and no responsibility is taken for any error, omission, or mis-statement. This plan is for illustrative purposes only.

5A Harden Street, Waikerie

