



7 Lakeside Court, HAMILTON, VIC 3300

Lakeside Living in a Sought After Location

Perfectly positioned in the peaceful surrounds of Lakeside Court, this well-presented brick veneer two storey townhouse offers a wonderful opportunity for those seeking a low maintenance lifestyle, quality accommodation, and an enviable location.

Designed with comfortable living in mind, the home features three generous bedrooms and two bathrooms, providing excellent space for families, professionals, retirees, or investors alike.

The two storey layout creates a practical separation of living and bedroom zones, while maintaining a warm and inviting feel throughout.

The ground level offers a welcoming living area, with a master bedroom and ensuite, functional kitchen and dining space with easy access to alfresco, laundry, and toilet.

Upstairs provides additional privacy with well-appointed bedrooms and bathroom facilities.

TYPE: For Sale

INTERNET ID: 300P198459

SALE DETAILS

\$400,000

CONTACT DETAILS

Hamilton

89 Gray Street
Hamilton, VIC
03 5551 6600

Dion McFarlane

0428 598 354

Enjoy the convenience of an attached carport, low-maintenance surrounds, and a location that places you close to everything Hamilton has to offer including schools, shops, and the picturesque walking tracks and recreational facilities around Lake Hamilton.

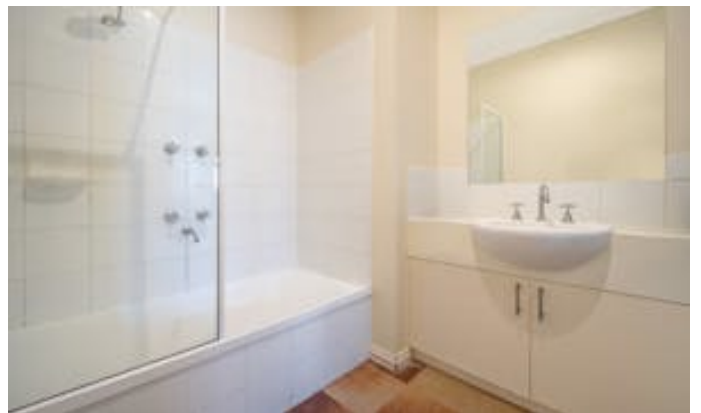
Property Features:

- Brick veneer two-storey townhouse
- Three spacious bedrooms
- Two bathrooms
- Practical kitchen with ample storage
- Attached carport and off street parking
- Low maintenance outdoor area
- Quiet court location
- Close to schools, shops and Lake Hamilton
- Ideal first home, investment or downsizer opportunity

Offering an appealing combination of location, comfort, and convenience, this Lakeside Court townhouse presents a fantastic chance to secure a quality home in one of Hamilton's desirable residential pockets.

Other features: Close to Schools, Close to Shops, Close to Transport

- Land Area 171.00 square metres
- Bedrooms: 3
- Bathrooms: 2
- Car Parks: 1
- Single carport

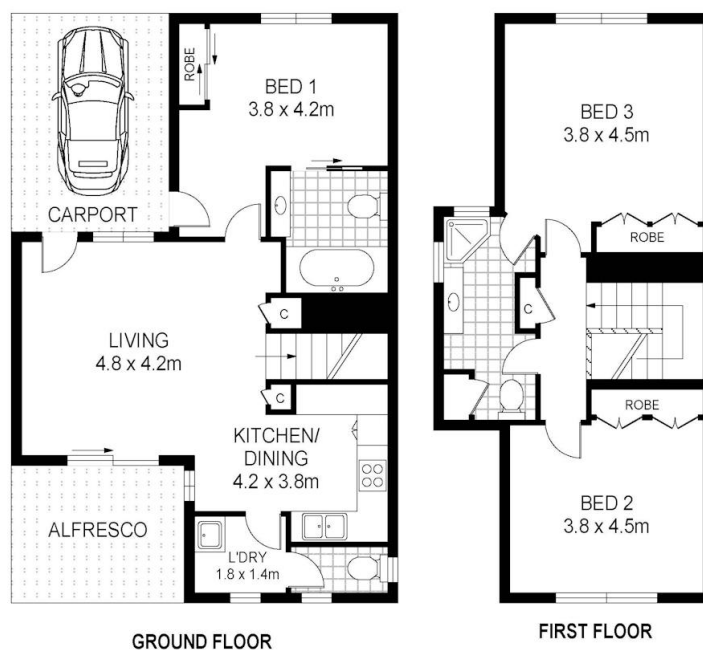






Scale in metres. Indicative only. Dimensions are approximate. All information contained herein is gathered from sources we believe to be reliable. However we cannot guarantee its accuracy and interested persons should rely on their own enquiries.

7 Lakeside Court, Hamilton



Scale in metres. Indicative only. Dimensions are approximate. All information contained herein is gathered from sources we believe to be reliable. However we cannot guarantee its accuracy and interested persons should rely on their own enquiries.

7 Lakeside Court, Hamilton