

10/10 Strangways Terrace, PORT ELLIOT, SA 5212

Perfect Holiday Lifestyle

Enjoy both a wonderful waterfront lifestyle retreat and a proven income stream, with this popular holiday rental featured on both Stayz and Airbnb, located within the tightly held and iconic "Dolphins Holiday Apartments."

This beautifully maintained solid group of just 10 apartments has benefited from recent improvements and continues to be well cared for.

Take a short stroll to the sandy beach and Flying Fish Caf , or wander into the heart of Port Elliot to enjoy its shops, hotels, caf s and the famous Port Elliot Bakery.

Unit 10 offers a light-filled open-plan living and dining area, with glass sliding doors that open onto a generous balcony complete with a BBQ and outdoor furniture where you can sit and enjoy the gentle sea breezes.

There are three spacious carpeted bedrooms (accommodating up to six guests), including a main bedroom with built-in robes, plus a modern bathroom with integrated laundry facilities.

TYPE: For Sale

INTERNET ID: 300P198497

SALE DETAILS

\$795,000 - \$820,000

CONTACT DETAILS

Elders Victor Harbor
11-13 Victoria Street
VICTOR HARBOR, SA
08 8555 9000
RLA: 62833

Deb Meagher
0429 009 132

Residents and guests also enjoy access to a communal laundry, outdoor shower and paved garden patio area. A designated carport is included, with space for a second vehicle.

This property is perfect as a holiday let or it could be the perfect family weekend getaway where you can start creating wonderful family memories!

Inspection by appointment.

Disclaimer: We have in preparing this information used our best endeavors to ensure that the information contained herein is true and accurate, but accept no responsibility and disclaim all liability in respect of any errors, omissions, inaccuracies or misstatements that may occur. Prospective purchasers should make their own enquiries to verify the information contained herein. RLA62833

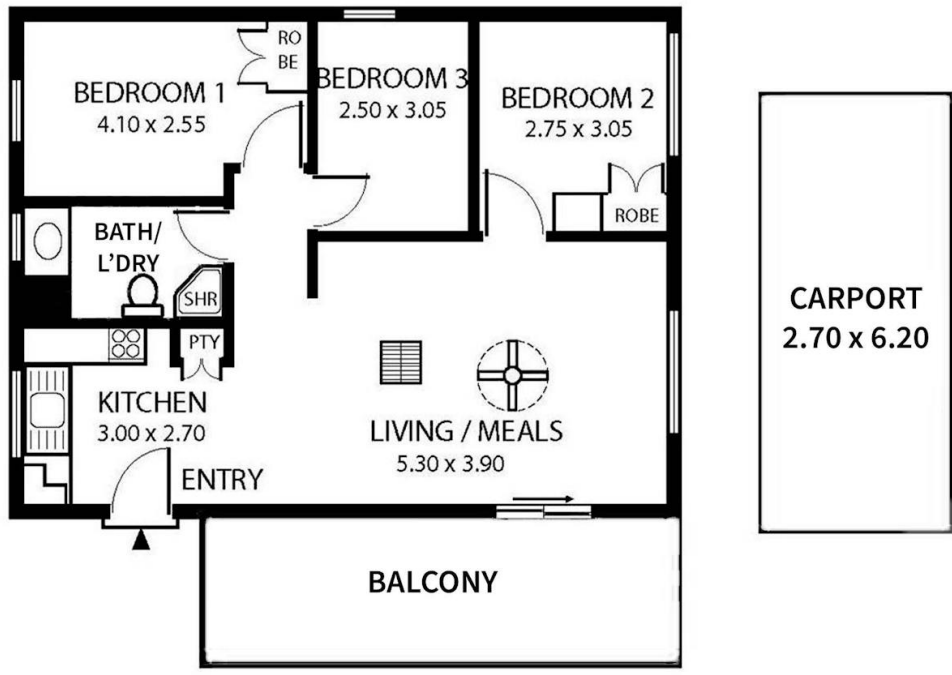
Other features: Car Parking - Surface, Close to Shops, Toilet Facilities

- Bedrooms: 3
- Bathrooms: 1
- Car Parks: 1
- Single carport









10/10 Strangways Terrace, Port Elliot

Scale in metres. This drawing is for illustration purposes only. All measurements are approximate and details intended to be relied upon should be independently verified.



PRODUCED BY
SOUTH COAST STUDIOS