



1236 West Mooreville Road, RIDGLEY, TAS 7321

Looking for a home with space, charm, and a touch of country living?

Built in 1973 and set on a near-level double block, this well-maintained home offers comfortable living in a peaceful setting. Walking distance to Ridgley primary and a 15-minute drive to Burnie.

Inside you'll find three bedrooms, all with built-in wardrobes, making it a practical choice for families, first-home buyers, or those looking to downsize without sacrificing space.

As the weather cools down, you'll love curling up beside the wood heater in the lounge creating the perfect spot to relax on those cold winter days and nights or using the ducted heating.

The kitchen is well-equipped with Chef hotplates, a Chef Classic oven, and a Bosch dishwasher, making everyday cooking and entertaining a breeze.

Outside, the established gardens create a welcoming setting and provide room to enjoy the outdoors.

Storage and parking are well catered for with a single garage attached to the home,

The particulars contained herein are supplied for information only and shall not be taken as a representation in any respect on the part of the vendor or its agent. Interested parties should contact the nominated person or office for full and current details.

TYPE: For Sale

INTERNET ID: 300P198546

SALE DETAILS

Offers Over \$650,000

CONTACT DETAILS

Elders Real Estate Burnie

72-74 Wilson Street
Burnie, TAS
03 6432 2311

Hamish Muir

0439 252 168

plus a double garage shed, offering space for vehicles, tools, hobbies, workshop or a retreat with toilet and a cosy woodheater.

Combining comfort, practicality, and a peaceful Ridgley location, this is a property you'll be proud to call home.

DISCLAIMER: While Elders Real Estate Burnie has taken every care to verify the accuracy of the details in this advertisement, we cannot guarantee its correctness. Prospective buyers or tenants need to take such action as is necessary, to satisfy themselves of any pertinent matters

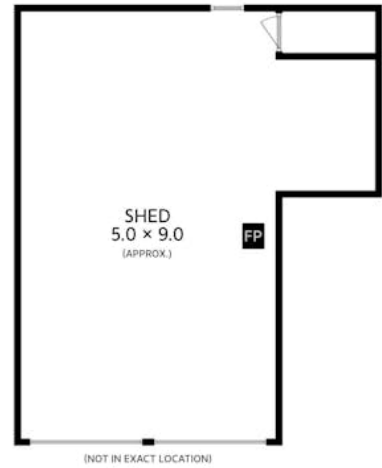
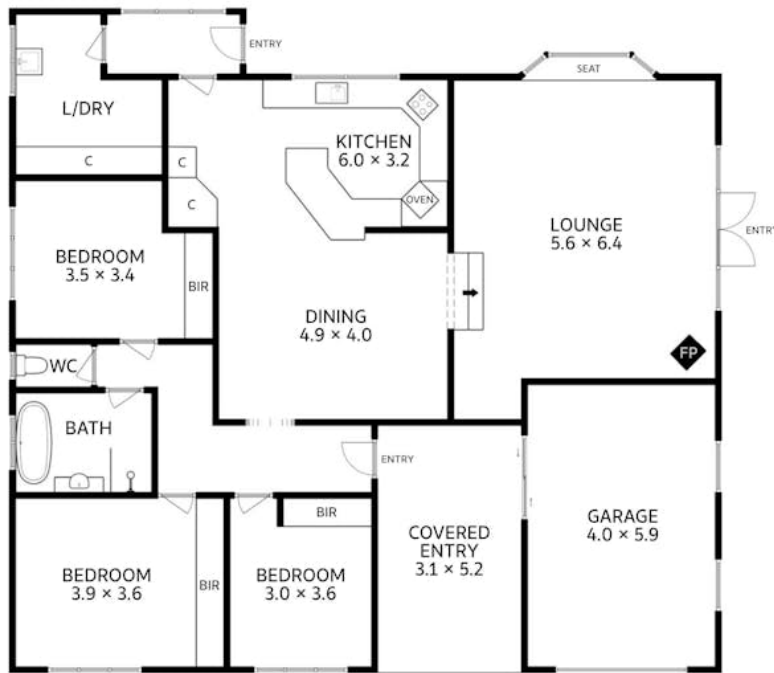
- Land Area 1,328.00 square metre
- Building Area: 154.00 square metres
- Bedrooms: 3
- Bathrooms: 1
- Single garage







1236 West Mooreville Road
Ridgley



Approx. Floor Area 154 sq m
(excluding covered entry and shed)

All measurements are internal and approximate.
This plan is a sketch for illustration, not valuation.

