



59 Siegersdorf Road, TANUNDA, SA 5352

A Landmark Vineyard Estate in Australia's Premier Wine Region

51.70 hectares, 127.75 acres

An outstanding opportunity to secure a premium wine-producing estate in the heart of the world-renowned Barossa Valley. Set across 51.7 hectares on four titles, the property comprises 31.2 hectares of established Shiraz, Cabernet Sauvignon and Grenache vineyards, producing premium grade fruit.

Supported by secure water, sustainable vineyard practices and extensive operational infrastructure-including machinery storage, office facilities and a spacious three-bedroom residence-this is a turnkey vineyard operation.

With existing supply contracts, Dorrien Vineyard offers immediate income, operational efficiency and long-term investment potential. 59 Siegersdorf Road, Nuriootpa is an exceptional opportunity to invest in one of Australia's most prestigious wine regions.

For a detailed information memorandum or to arrange your private inspection contact Dave Kanizay on 0408 834 586.

TYPE: For Sale

INTERNET ID: 300P198588

SALE DETAILS

[Contact Agent](#)

CONTACT DETAILS

Barossa

127 Murray Street
Tanunda, SA
(08) 8562 2883
RLA: 62833

David Kanizay
0408 834 586

Disclaimer:

We have in preparing this information used our best endeavours to ensure that the information contained herein is true and accurate but accept no responsibility and disclaim all liability in respect of any errors, omissions, inaccuracies, or misstatements that may occur. Prospective purchasers should make their own enquiries to verify the information contained herein. Elders Real Estate RLA62833

- Land Area 51.7 hectares
- Bedrooms: 3
- Bathrooms: 1

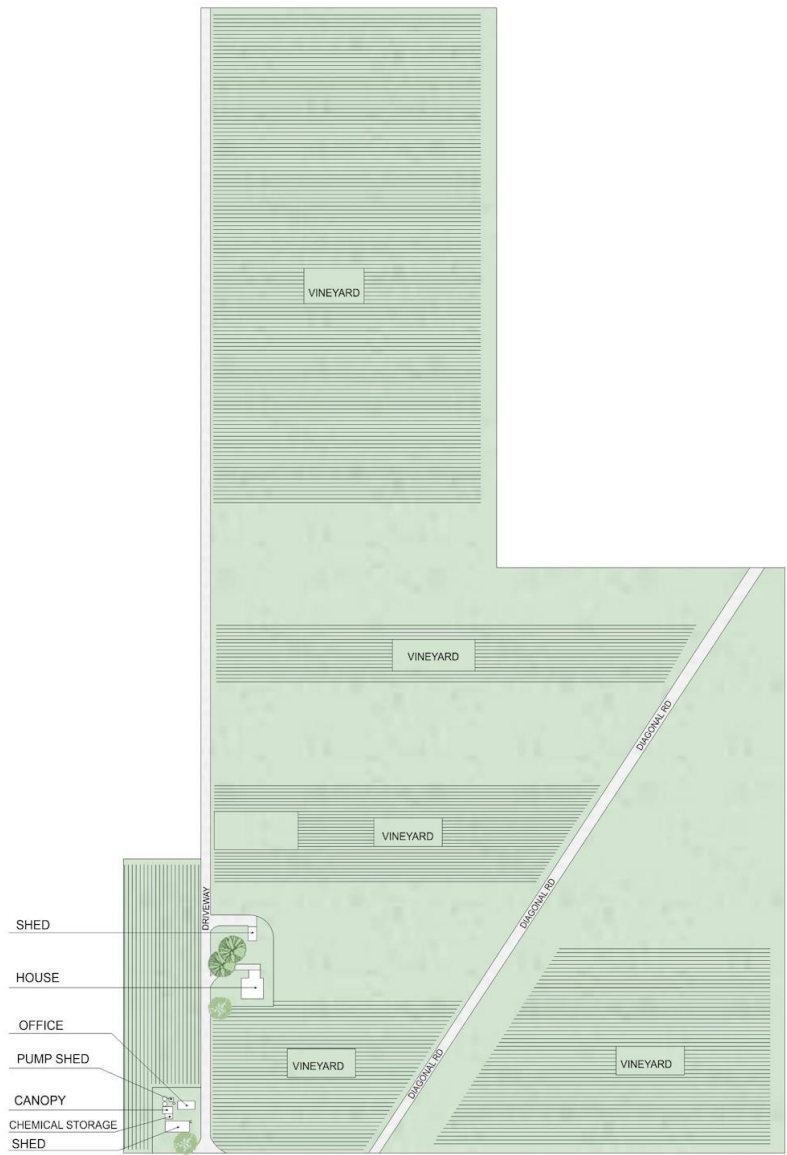
HOMESTEAD

Bedrooms	3
Bathrooms	1





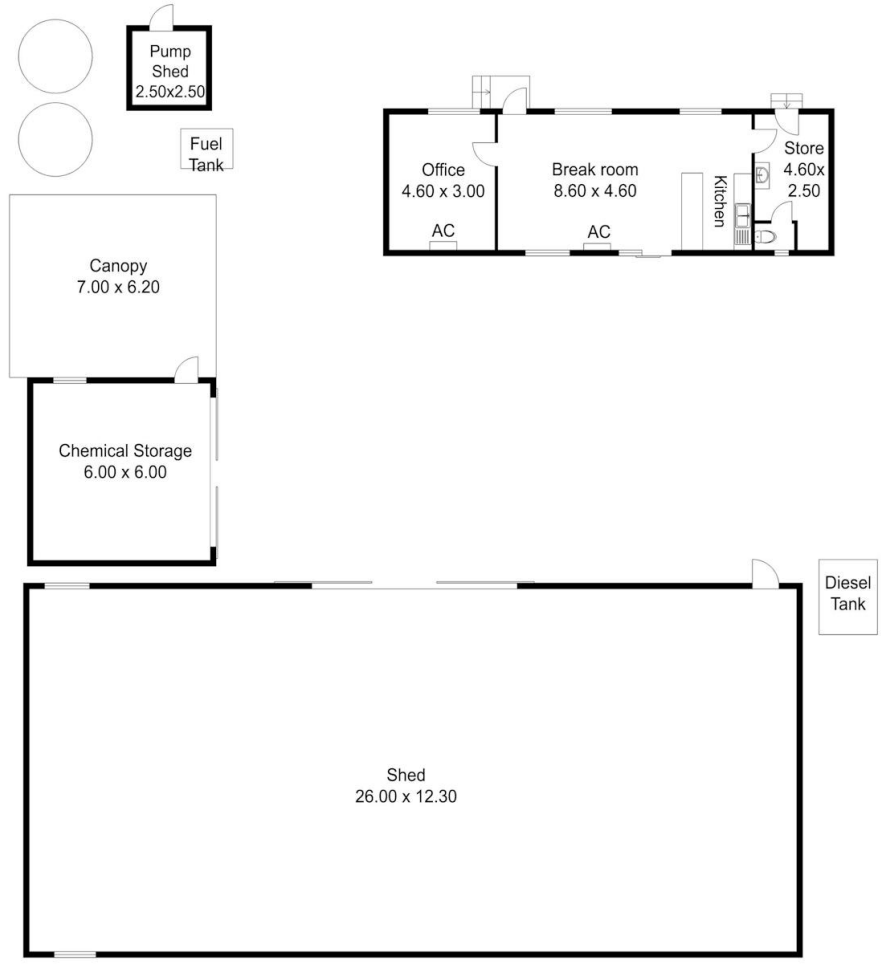




59 Seigersdorf Rd, Tanunda

Approx. 51 Hectares

Disclaimer: All measurements are approximate and are provided for illustrative purposes only. While every effort has been made to ensure accuracy, actual dimensions may vary. Interested parties should conduct their own enquiries.



Internal:	68 m ²
External:	79 m ²
Shed :	326 m ²
Total:	473 m ²

59 Seigersdorf Rd, Tanunda

Disclaimer: All measurements are approximate and are provided for illustrative purposes only. While every effort has been made to ensure accuracy, actual dimensions may vary. Interested parties should conduct their own enquiries.