



14 Shoreline Drive, CLAYTON BAY, SA 5256

A Riverside Sanctuary Where Nature and Luxury Meet

Nestled in the heart of the charming riverside township of Clayton Bay, this exceptional property offers a lifestyle many dream of but few ever find.

Surrounded by the beauty of the Lower Murray, where abundant birdlife fills the skies, frogs sing at dusk, and healthy waterways teem with fish, this is a place where nature truly takes centre stage.

Whether you enjoy boating, kayaking, fishing, leisurely nature walks, or simply relaxing amongst peaceful surroundings, Clayton Bay offers an enviable lifestyle that feels a world away from the hustle and bustle.

Meticulously renovated from top to bottom with absolutely no expense spared, this stunning home presents as brand new. Every detail has been thoughtfully considered, creating a residence that combines timeless elegance with modern comfort.

At the heart of the home is a magnificent designer kitchen featuring Caesarstone benchtops, a generous island bench, premium 900mm gas cooktop, quality appliances, and an abundance of storage. The kitchen seamlessly overlooks the spacious

The particulars contained herein are supplied for information only and shall not be taken as a representation in any respect on the part of the vendor or its agent. Interested parties should contact the nominated person or office for full and current details.

TYPE: For Sale

INTERNET ID: 300P198589

SALE DETAILS

\$730,000 - \$770,000

CONTACT DETAILS

**Sylvia Jemson-Ledger
Hills & Fleurieu
0487 301 390**

open-plan lounge, family and dining areas, creating the perfect space for entertaining family and friends.

Soaring 10-foot ceilings, decorative cornices, solid timber doors, and beautiful timber look vinyl plank flooring throughout the living areas add warmth, character and sophistication. Large windows invite natural light into every room, enhancing the home's welcoming atmosphere.

Step outside to discover a fabulous timber-decked entertaining area, complete with an outdoor toilet and surrounded by beautifully landscaped gardens. This private sanctuary is the perfect place to enjoy your morning coffee, entertain guests, or unwind while taking in the peaceful surroundings.

The accommodation comprises three generous bedrooms, with new carpets to the two largest bedrooms and timber floating floors to the third. The luxurious new bathroom has been beautifully appointed with a double sized shower, vanity and toilet, creating a resort-style feel.

Further features include:

- Triple garage with power, concrete floor, lighting and multiple power points
- Two automatic roller doors with generous 2.7-metre clearance
- Convenient pedestrian access door
- Drive-through access to the rear yard
- Large turning circle ideal for caravans, boats and trailers
- Split-system air conditioning
- Ceiling fans
- Downlights throughout the living areas
- Fully landscaped front and rear gardens
- Lush lawns and feature moss-rock retaining walls
- Immaculate presentation throughout
- Set on a 932m2 allotment

This is a property where every detail has been completed to perfection. Simply move in, unpack, and start enjoying the relaxed riverside lifestyle that Clayton Bay is famous for.

A rare opportunity to secure a beautifully renovated home in one of South Australia's most peaceful and picturesque river communities.

NB Virtual Furniture has been used in some of the photography

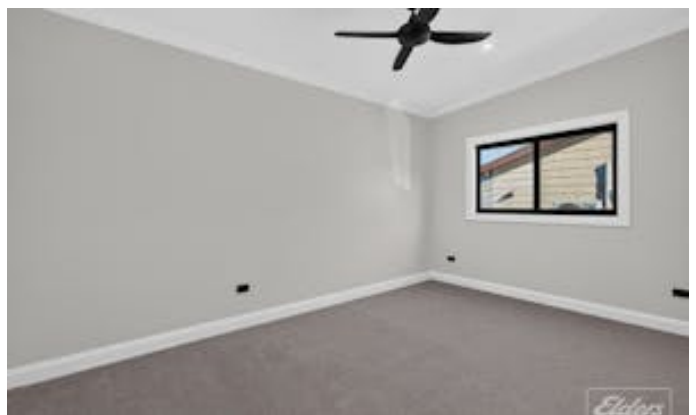
Disclaimer: We have in preparing this information used our best endeavours to ensure that the information contained herein is true and accurate but accept no responsibility and disclaim all liability in respect of any errors, omissions, inaccuracies or misstatements that may occur. Prospective purchasers should make their own enquiries to verify the information contained herein. RLA 62833

Other features: Carpeted, Roller Door Access

- Land Area 935.00 square metres
- Bedrooms: 3
- Bathrooms: 1
- Car Parks: 6
- Double garage
- Floorboards











14 Shoreline Dr, Clayton Bay

Scale in metres. This drawing is for illustration purposes only. All measurements are approximate and details intended to be relied upon should be independently verified.



PRODUCED BY
SOUTH COAST STUDIOS