



8A Maxwell Street, KAPUNDA, SA 5373

A Home Designed for Every Stage of Family Life

Positioned in a sought-after pocket of Kapunda, this beautifully presented Sterling Homes residence, built in 2013, delivers the perfect combination of space, comfort, and flexibility for the modern family. Set on an approximate 680m² allotment, the thoughtfully designed floorplan offers multiple living zones, up to five bedrooms, and seamless indoor-outdoor entertaining, creating a home that can easily adapt as your family's needs evolve.

From the moment you arrive, the impressive timber double doors create a warm welcome, opening to interiors where natural oak hybrid flooring flows through the main living areas. At the front of the home, a spacious lounge and dining area, complete with a reverse-cycle split system for year-round comfort.

At the heart of the home, the light-filled open plan living area is designed for everyday family life with the warm embrace of the slow combustion heater. The contemporary kitchen overlooks the central living space and features a large bay window, generous bench and cupboard space, stainless steel appliances, an island breakfast bar, and an oversized walk-in pantry, making it as practical as it is stylish.

The spacious master suite offers a private retreat for parents, complete with double

The particulars contained herein are supplied for information only and shall not be taken as a representation in any respect on the part of the vendor or its agent. Interested parties should contact the nominated person or office for full and current details.

TYPE: For Sale

INTERNET ID: 300P198690

SALE DETAILS

\$799,000 - \$829,000

CONTACT DETAILS

Barossa

127 Murray Street

Tanunda, SA

(08) 8562 2883

RLA: 62833

Teri Wenske

0409 687 465

door entry, an oversized ensuite, and a walk-in robe. Bedrooms two, three, and four are all generously sized with built-in robes, while the fifth bedroom offers the flexibility to be used as a nursery, guest room, home office, or study.

Comfort is assured throughout every season with evaporative ducted air conditioning, a reverse-cycle split system, and a cosy slow combustion heater. Adding to the home's efficiency is a 6.3kW solar system, helping to keep energy costs down.

Step outside and you'll discover an impressive pitched-roof alfresco area with paved flooring, seamlessly extending the indoor living space and providing the ideal setting for year-round entertaining with family and friends. The low-maintenance backyard has been thoughtfully designed with plenty of lawn for children and pets to enjoy, along with a veggie patch for those with a green thumb.

Offering an abundance of living space, a highly flexible floorplan, and quality finishes throughout, this exceptional family home is perfectly positioned in one of Kapunda's most desirable locations. Whether you're accommodating a growing family, working from home, or simply looking for more room to enjoy, 8A Maxwell Street is a home that truly has it all.

Property Information

Council: Light Regional Council

Council Rates: \$3,291.14 per annum

Zoning: N Neighbourhood

Local Government Description: Residential

Frontage: 20m approx

SA Water: Supply Charge \$82.30 per quarter

Solar System: 6.3kw Solar System

Year Built: 2013

Land Size: 680m² approx

Disclaimer:

We have in preparing this information used our best endeavours to ensure that the information contained herein is true and accurate but accept no responsibility and disclaim all liability in respect of any errors, omissions, inaccuracies, or misstatements that may occur. Prospective purchasers should make their own enquiries to verify the information contained herein. Elders Real Estate RLA62833

Other features: Close to Schools, Close to Shops

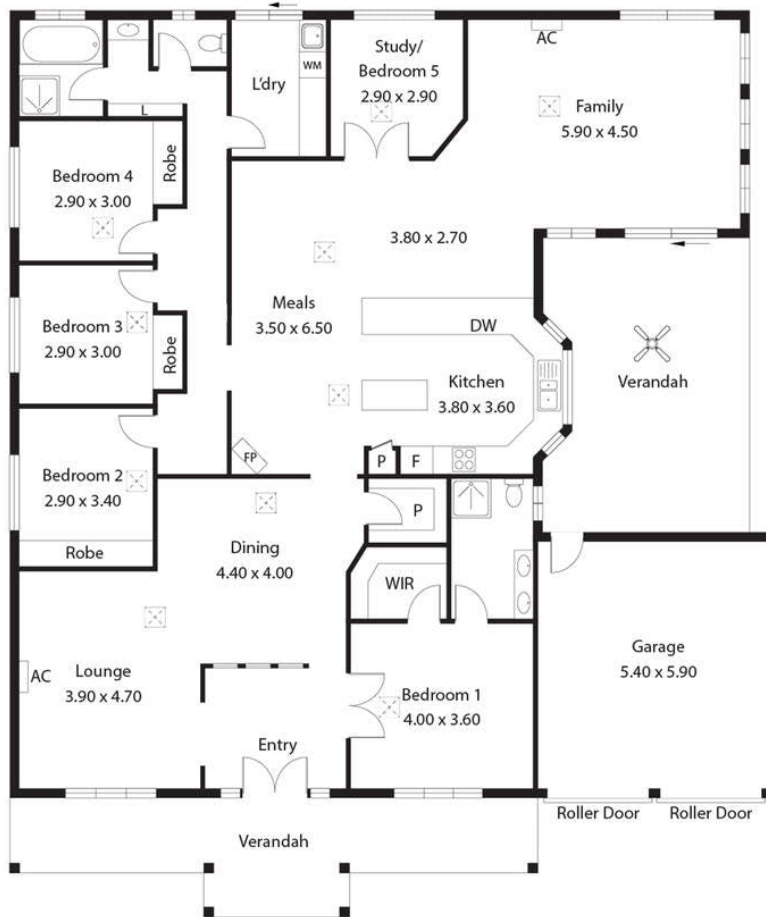
- Land Area 680.00 square metres
- Building Area: 261.00 square metres
- Bedrooms: 5
- Bathrooms: 2
- Car Parks: 2
- Double garage
- Ensuite







8A Maxwell Street,
KAPUNDA



| | |
|---------------|-------------------|
| Living: | 210.00SQ.M |
| Garage: | 31.86SQ.M |
| Verandah: | 52.78SQ.M |
| TOTAL: | 294.64SQ.M |

This Drawing is for illustration purposes only. All measurements are internal and approximate. Details intended to be relied upon should be independently verified.