



22 Emery Avenue, WOODROFFE, NT 0830

WONDERS IN WOODROFFE

Discover comfort and convenience in this well-presented home situated in a quiet Woodroffe street. With a spacious layout and a fantastic rear yard, this property is perfect for families looking to enjoy everyday living with plenty of outdoor space.

Property Features:

- Unfurnished
- Large kitchen with island bench + gas cooking
- Generous open-plan living and dining area
- Dining opens onto a covered rear patio - perfect for entertaining
- 3 bedrooms, all with vinyl flooring
- Neat and tidy bathroom
- Patio overlooks a wide lawn and easy-care gardens
- Automatic front gate for privacy and security

The particulars contained herein are supplied for information only and shall not be taken as a representation in any respect on the part of the vendor or its agent. Interested parties should contact the nominated person or office for full and current details.

TYPE: For Rent

INTERNET ID: 300P198943

RENTAL DETAILS

Rent / Lease:

\$620 per week

CONTACT DETAILS

Darwin

70 Smith Street

DARWIN, NT

08 8946 0500

Sharon Clough

0409 271 969

- Internal laundry facilities
- Double carport + internal shed for added storage
- Pets on application

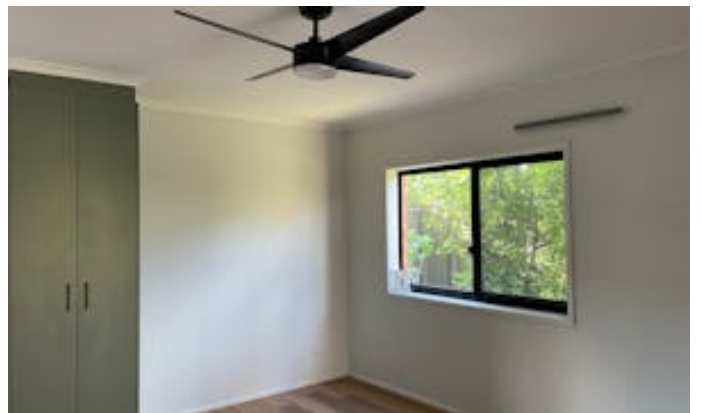
Located just moments from local shops, schools, parks and Palmerston CBD conveniences - this home ticks all the boxes for easy Territory living!

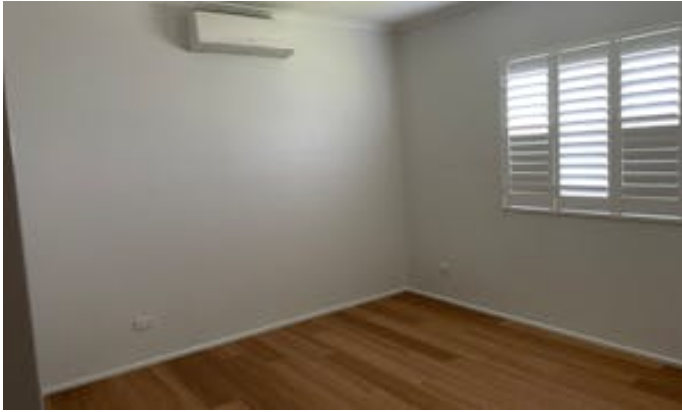
How to apply? A link will be sent via 2Apply once the property has been inspected.

Elders does NOT accept 1FORM applications. Please leave your details to register for the next available inspection.

Other features: Close to Schools, Close to Shops, Close to Transport

- This property is: Unfurnished
- Pets: Yes
- Available Now
- Bedrooms: 3
- Bathrooms: 1
- Car Parks: 2







0m 1m 2m 3m 4m 5m SCALE(METRES)
PLANS SHOWN ONLY INDICATIVE OF LAYOUT. DIMENSIONS ARE APPROXIMATE.

22 EMERY AVENUE