



2/15 Yale Parade, DURACK, NT 0830

MODERN TOWNHOUSE BACKING ONTO PALMERSTON GOLF COURSE WITH SPA & LAKESIDE LIFESTYLE

Enjoy the perfect blend of comfort, space and lifestyle in this beautifully presented three-bedroom townhouse, ideally positioned in one of Durack's most sought-after pockets.

Backing directly onto Palmerston Golf Course with gated access to picturesque lakeside walking paths, this spacious home offers relaxed indoor-outdoor living, a private courtyard with an above-ground spa, and all the conveniences of modern family living.

Property Features:

- Spacious three-bedroom townhouse in a peaceful, leafy location
- Open-plan living and dining area filled with natural light
- Modern kitchen featuring stainless-steel appliances, ample storage and striking red glass splashback

TYPE: For Rent

INTERNET ID: 300P199056

RENTAL DETAILS

Rent / Lease:

\$700 per week

CONTACT DETAILS

Darwin

70 Smith Street
DARWIN, NT
08 8946 0500

Korey Ainslie
0438 780 050

- Covered rear entertaining deck overlooking the easy-care courtyard
- Above-ground spa perfect for relaxing after a long day
- Private rear gate with direct access to lakeside walking paths and Palmerston Golf Course
- Three generous upstairs bedrooms with plush carpet and high ceilings
- Built-in wardrobes to two bedrooms
- Main bedroom with convenient Jack-and-Jill access to the family bathroom
- Two full bathrooms, including one on the ground floor adjoining the laundry
- Split-system air conditioning throughout for year-round comfort
- Under-stair storage
- Single carport plus additional off-street parking on the driveway
- Walking distance to Durack Primary School
- Minutes from Palmerston shopping centres, restaurants, schools and public transport

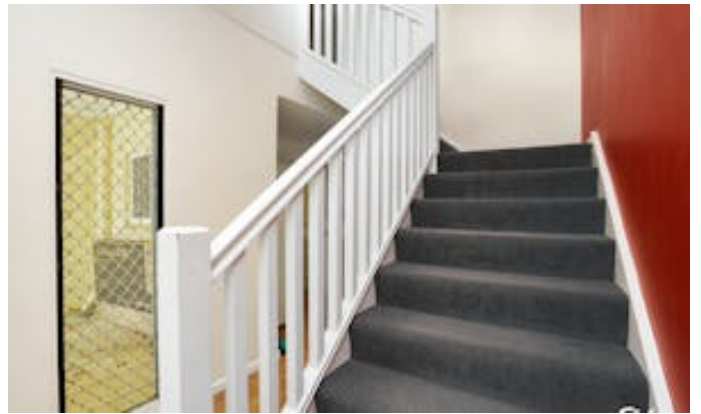
This is a fantastic opportunity to secure a low-maintenance home in a highly desirable lakeside location, offering the perfect balance of lifestyle, convenience and comfort.

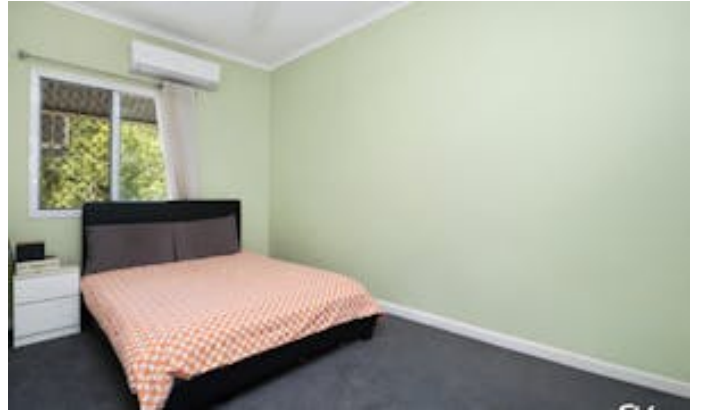
How to apply? A link will be sent via 2Apply once the property has been inspected.

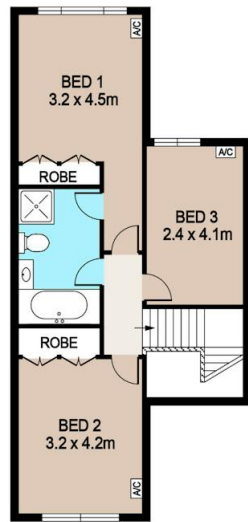
Elders does NOT accept 1FORM applications. Please leave your details to register for the next available inspection.

Other features: Close to Schools, Close to Shops, Close to Transport, Golf Course Estate, Spa

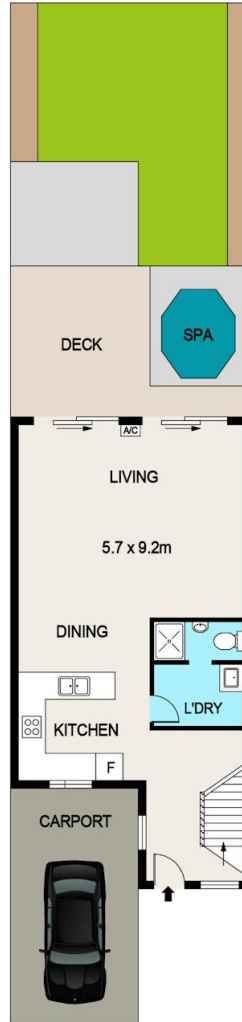
- This property is: Unfurnished
- Pets: No
- Available on: 24/07/26
- Bedrooms: 3
- Bathrooms: 2
- Car Parks: 1
- Ensuite







FIRST FLOOR



GROUND FLOOR

2/15 YALE PARADE, DURACK

DISCLAIMER
PLANS SHOWN ARE FOR MARKETING PURPOSES ONLY, ALL DIMENSIONS ARE APPROXIMATE AND NOT TO SCALE. THEY ARE SUBJECT TO ERRORS AND INACCURACIES AND NO LIABILITY WILL BE ACCEPTED. INTERESTED PARTIES SHOULD MAKE THEIR OWN INQUIRES.