



## 9 Evelyn Sturt Drive, WILLUNGA, SA 5172

'A Family Home!'

THIS PROEPRTY IS NOW UNDER CONTRACT

Attractive conventional style home tucked away in the quiet back street of Willunga township, yet still within comfortable walking distance for the kids and the whole family to the schools, Main Street, shopping and all of the community facilities.

The home enjoys a host of features including 4 bedrooms, the master having a large walk-in robe, plus a second walk-through door which provides a two-way access point to the main and only bathroom.

A large formal lounge room is complete with a reverse cycle air-conditioner and adjoins the central kitchen which over looks a meals and informal family room. The kitchen has ample bench and cupboard space and incorporates the normal appliances including gas hot plates, electric oven and dishwasher. A combustion heater in the family area provides ample heating in the winter months. The home has recently undergone an extensive make-over featuring brand new vogue bathroom, neutral repaint throughout and new carpets which are sure to impress.

Other improvements of this impressive property include double carport, beautiful north facing all weather entertaining verandah, double garage with two adjoining small sheds

The particulars contained herein are supplied for information only and shall not be taken as a representation in any respect on the part of the vendor or its agent. Interested parties should contact the nominated person or office for full and current details.

**TYPE:** Sold

**INTERNET ID:** 300P22217

**SALE DETAILS**

**NOW UNDER  
CONTRACT**

**CONTACT DETAILS**

**Jurgen Ollwitz**  
0408 083 107

collectively providing a store area, workshop plus more under cover parking.

The property has an incredible array of mature palm trees and low maintenance garden beds.

This property provides the opportunity to sit down and just relax.

Come and have a look, I think you will enjoy it.

- Land Area 704.00 square metres
- Bedrooms: 4
- Bathrooms: 1
- 4 car carport



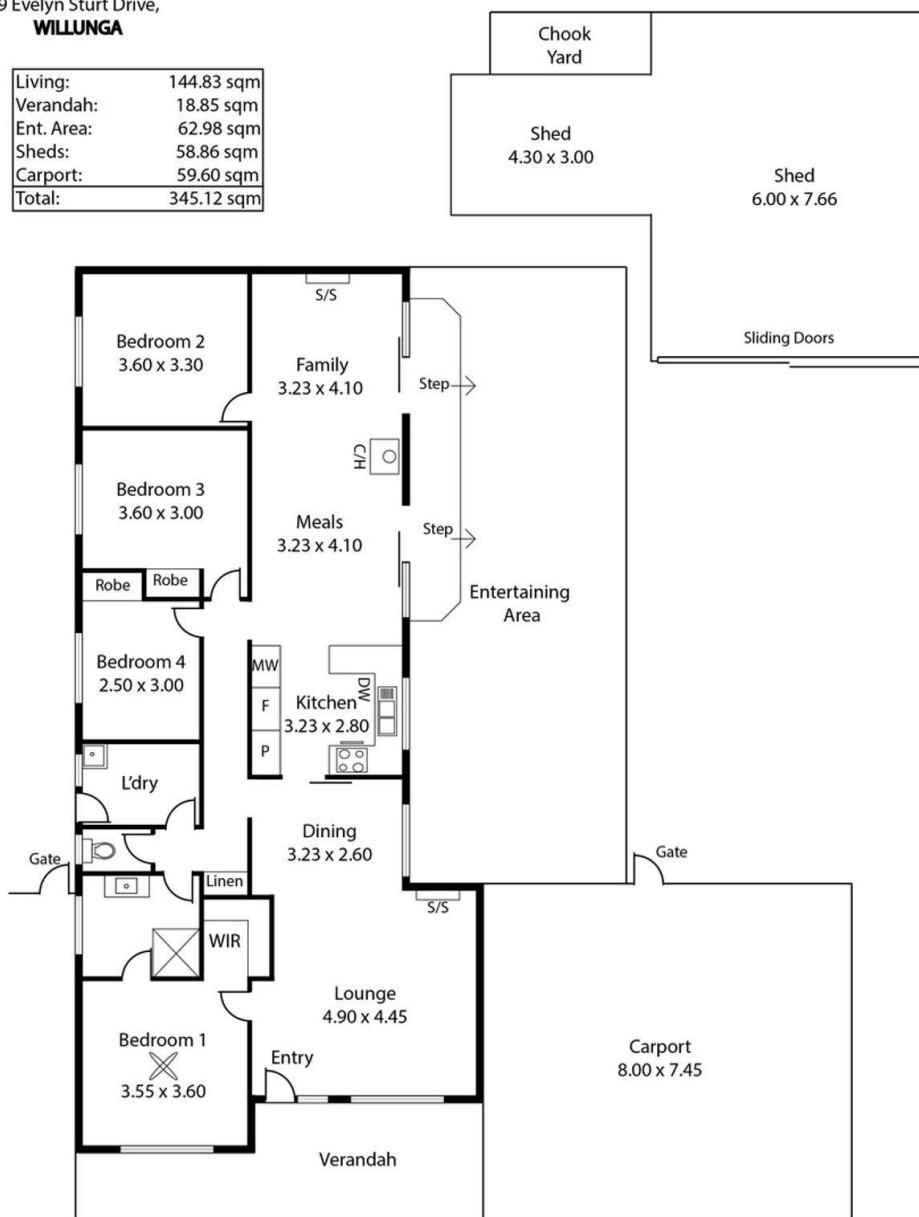






9 Evelyn Sturt Drive,  
**WILLUNGA**

Living:	144.83 sqm
Verandah:	18.85 sqm
Ent. Area:	62.98 sqm
Sheds:	58.86 sqm
Carport:	59.60 sqm
Total:	345.12 sqm



This Drawing is for illustration purposes only.  
All measurements are internal and approximate.  
Details intended to be relied upon should be  
independently verified.

Produced by Open2view.com