



16 Beaumont Court, MOUNT COMPASS, SA 5210

'Modern home in a rural community'

PRICE GUIDE \$530,000

This delightful property is on a safe and secure cul-de-sac in a new estate in the rural township of Mount Compass, and also boasts some nice views of the local countryside. The beautiful spacious modern 2018-built home has been thoughtfully designed with all the space and features that you have been looking for. It offers an excellent mix of indoor and outdoor living spaces, and this includes an undercover pergola area and also a paved sitting area, with both accessed from the large open plan kitchen/dine/family room.

The picturesque gardens are low-maintenance and the nice lawned area down one side of the house provides a good safe and secure environment for children and pets.

Other features that are designed to increase living space quality include;

Low maintenance property

3 generous sized bedrooms (2 with built in robes)

TYPE: Sold

INTERNET ID: 300P22233

SALE DETAILS

Contact Agent

CONTACT DETAILS

Ross Coleman
0427836733

Master with WIR & en-suite

Home theatre room

Open plan family area/kitchen set at the rear of the house.

Kitchen with dishwasher and gas cook top

Large sliding doors open to the outdoor alfresco/entertain areas.

Ducted reverse cycle air for year-round comfort

Remote controlled roller doors on the double garage

Quality floor coverings

Connected to SA Water mains, power, NBN broadband and common effluent

3kW (approx.) solar system

This home is perfect for those wanting a modern near-new large family home to move straight into, with all of the hard work already done, including established gardens back and front and retaining walls.

Stepping into this beautiful property set within a great rural community is most impressive, and equally impressive is the fact that such a quiet, relaxing and quality address is so close to everything.

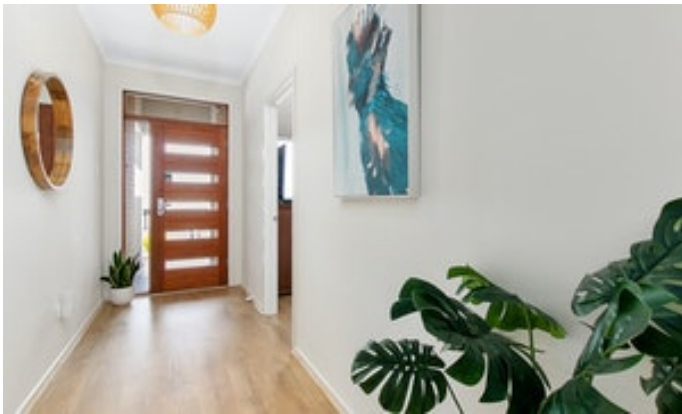
The property is in a great location with other modern homes, just a short distance to the excellent R-12 school, shopping, tavern, services and golf course in Mount Compass.

Mount Compass is an ideal country lifestyle location for families given its country community ambience, and being central on the beautiful Fleurieu Peninsula to the main country service and tourism centres of Victor Harbor and McLaren Vale, which are both only around a 20 minute drive away.

The Adelaide CBD is only around 60 minutes by car via the Southern Expressway.

This all adds up to the opportunity to create a lovely home and rural lifestyle that anyone would be proud to call their own.

- Land Area 566.00 square metres
- Bedrooms: 3
- Bathrooms: 2
- Double garage

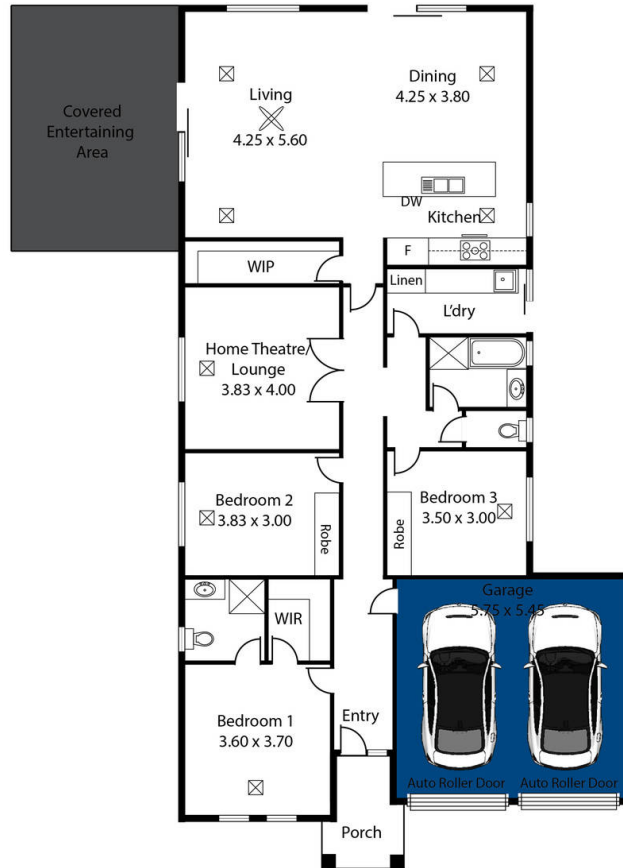








16 Beaumont Court,
MOUNT COMPASS



Living:	160.16 sqm
Porch:	4.06 sqm
Ent. Area:	25.32 sqm
Garage:	35.46 sqm
Total:	225.00 sqm



This Drawing is for illustration purposes only.
All measurements are internal and approximate.
Details intended to be relied upon should be
independently verified.

Produced by

