



25 Islander Drive, ENCOUNTER BAY, SA 5211

Welcome to Lake Living

Welcome to lakeside living! This lovely property in such a tightly held location is being offered for sale for the first time in years.

Perfect for those who love the idea of lake and ocean water sports.

The stunning views with uninterrupted lake views from the living and entertaining areas with easy access to the waters edge.

What we love about this home:

Garage with auto double door and secure private gate access

Well established garden courtyard with mature plants and pergola

Timber all eclectic kitchen with breakfast bar, under bench oven

Spacious living room with spectacular lake views

Private lakefront deck

The particulars contained herein are supplied for information only and shall not be taken as a representation in any respect on the part of the vendor or its agent. Interested parties should contact the nominated person or office for full and current details.

TYPE: Sold

INTERNET ID: 300P27179

SALE DETAILS

SOLD

CONTACT DETAILS

Barossa

127 Murray Street

Tanunda, SA

(08) 8562 2883

RLA: 62833

Robyn Stanbury

0478 361 414

Master bedroom with ceiling fan, built-in wardrobe and ensuite

Bedrooms two and three both with built in robes and ceiling fans

Private courtyard

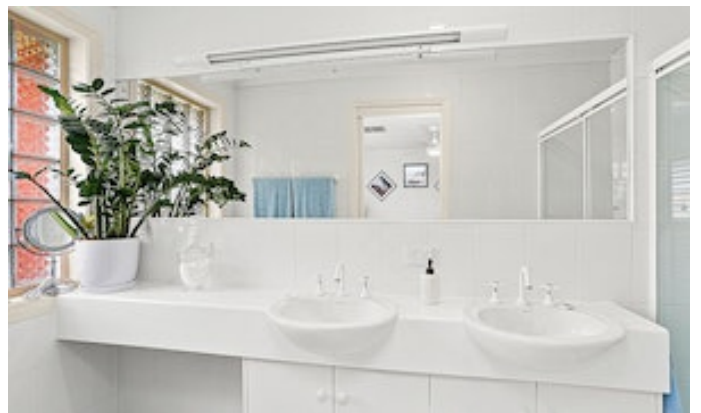
Enjoy a lazy morning cuppa, cleansing ale or cheeky wine in the early evening while watching the ever changing colour of the water and rowers passing by. Perfectly positioned within short distance to the Encounter jetty and boat ramp.

This is certainly not a property to miss, if a lock up and leave lifestyle is high on your priority list!

Disclaimer

*Prospective purchasers are encouraged to undertake their own enquiries in relation to the property. The information provided by and on behalf of the vendor may be approximate or inaccurate and may be incomplete. RLA: 62833.

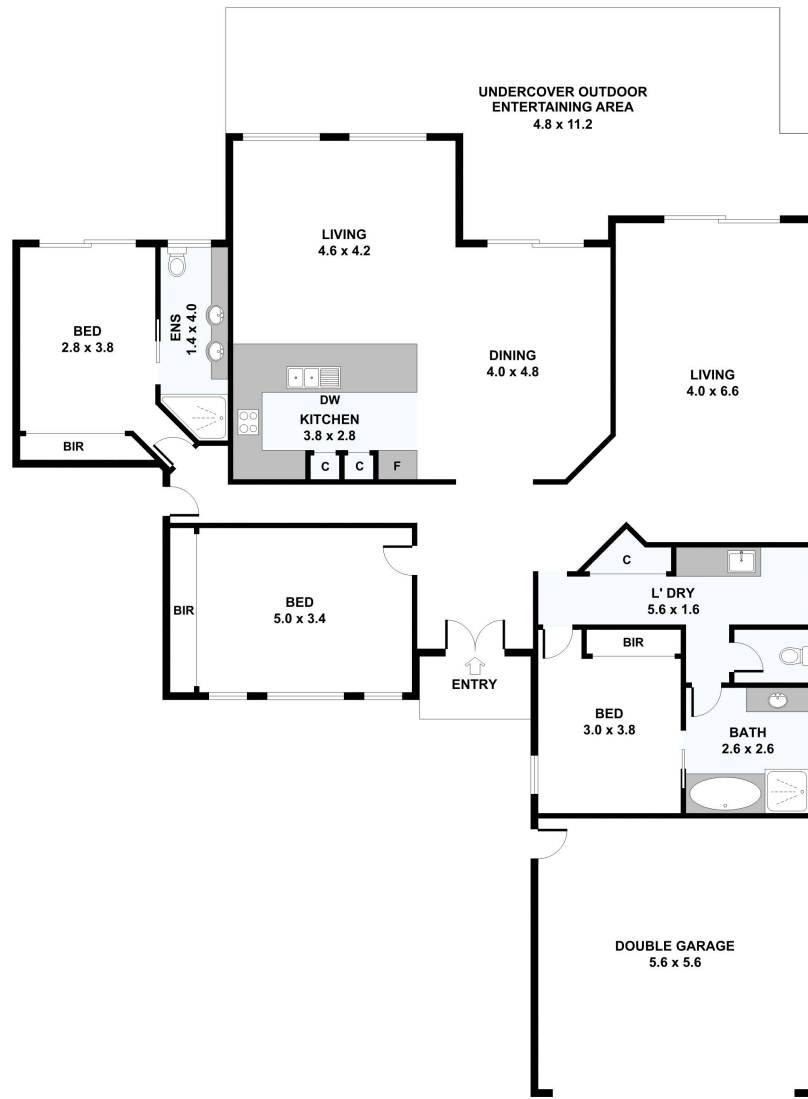
- Land Area 543.00 square metres
- Building Area: 19.00 square metres
- Bedrooms: 3
- Bathrooms: 2
- Double garage







25 Islander Drive, Encounter Bay



Please note: All stated dimensions are approximate only. Particulars given are for general information only and do not constitute any representation on the part of the vendor or agent.

