

19 Dickerson Street, BARMERA, SA 5345

Executive Living in the Heart of Barmera

This beautifully appointed residence has been extensively renovated during the current ownership and now presents as an executive family home.

The renovation project included a substantial improvement to the home including new bathrooms, kitchen, shedding, and significant improvements to the main structure.

The kitchen and dining area have been thoughtfully designed for family living and entertaining, offering extensive bench space, a dishwasher, breakfast bar, quality appliances, and elegant shaker-profile cabinetry.

The home offers three generous bedrooms under the main roof. The stylish master bathroom exudes modern luxury, featuring en-suite and much more.

Outdoor living is a true highlight of this property. A spacious, entertaining area can be enjoyed year-round, complemented by an outlook over the rear yard and fire pit area.

Rear lane access to the 3 x bay shed provides ample space for vehicle storage or a workshop. Parking is accommodated by the carport and there is additional space at the

The particulars contained herein are supplied for information only and shall not be taken as a representation in any respect on the part of the vendor or its agent. Interested parties should contact the nominated person or office for full and current details.

TYPE: For Sale

INTERNET ID: 300P45915

SALE DETAILS

\$515,000

CONTACT DETAILS

Elders Riverland

2 East Terrace

LOXTON, SA

8588 6066

RLA: 62833

Raphael Liddle

0405 005 138

rear yard and front yard for off street parking.

Ideally located on Dickerson Street, this property offers a convenient lifestyle within walking distance to Barmera's CBD, the Sporting Precinct, schools and the iconic Lake Bonney.

Barmera is situated approximately 256 km east of Adelaide on the southern bank of the River Murray, in the heart of South Australia's picturesque Riverland region.

Property Particulars:

Land Size 1,006m²

Rear Lane Access

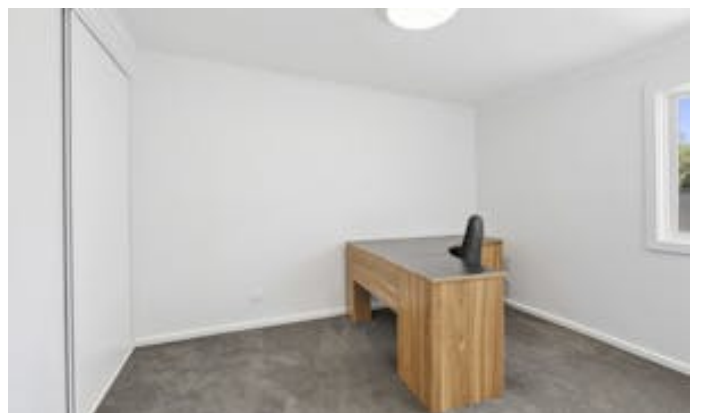
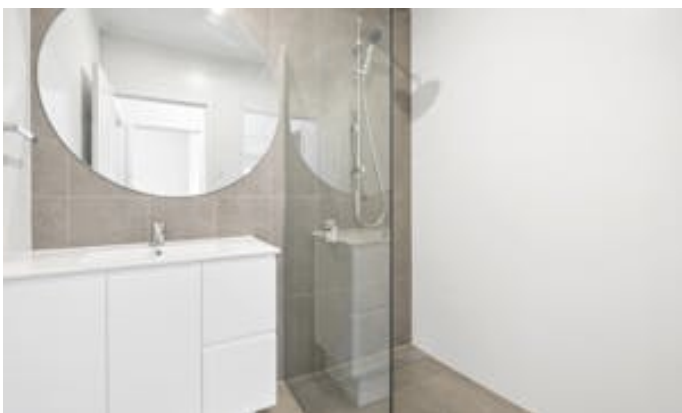
Date built 1946

Ducted heating & cooling

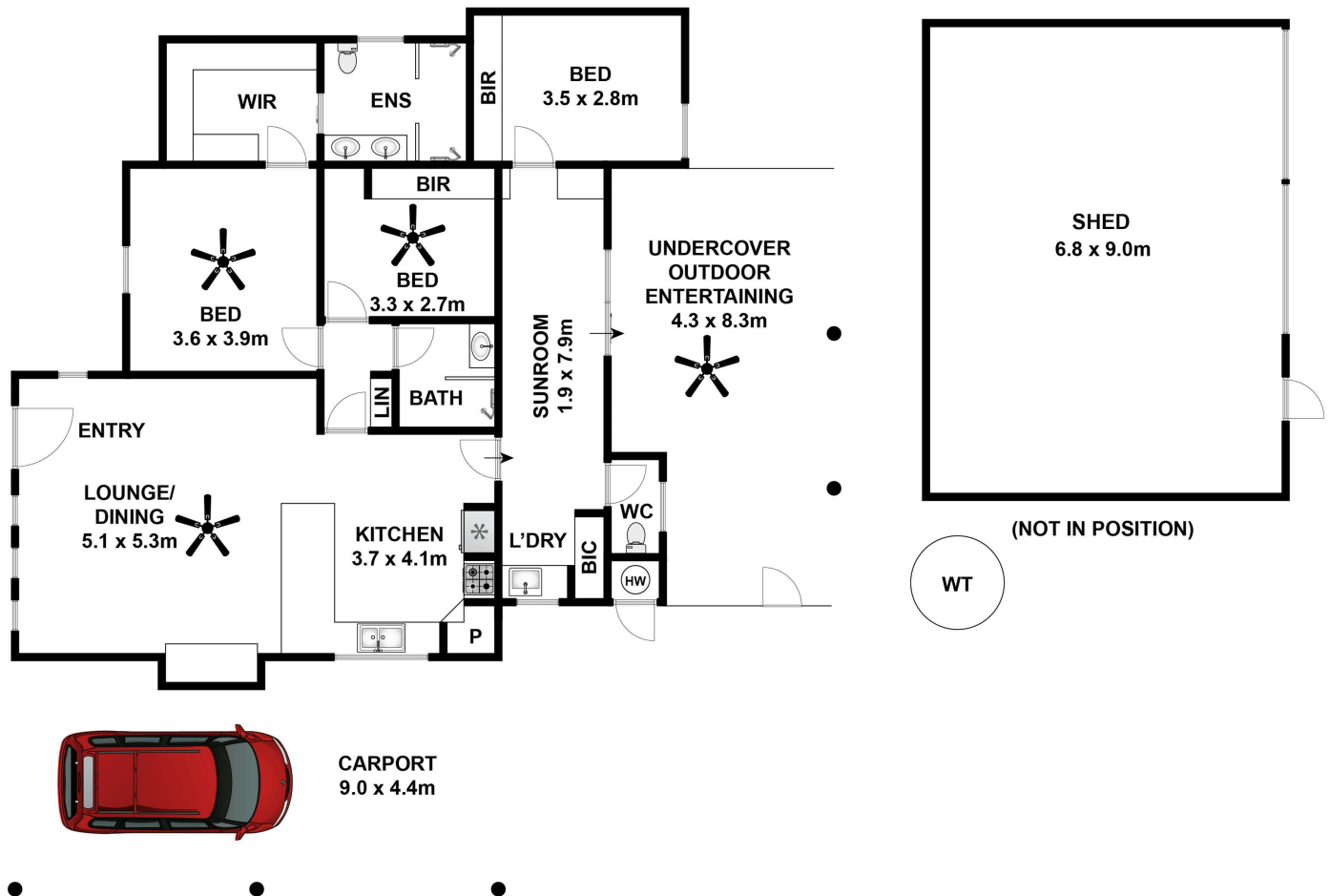
Berri Barmera Council Zoning Neighbourhood

Disclaimer: In preparing this information we have used our best endeavours to ensure details contained herein are true and accurate, however we accept no responsibility and disclaim all liability in respect of any errors, omissions, or inaccuracies. Prospective purchasers should make their own enquiries to verify the information contained herein.
RLA62833

- Land Area 1,006.00 square metre
- Bedrooms: 3
- Bathrooms: 2
- Car Parks: 2
- Double garage
- Double carport







Approx House Area 127m²

Whilst bwrm.com.au has made every attempt to ensure the accuracy of the floor plan contained here, measurements are approximate and no responsibility is taken for any error, omission, or mis-statement. This plan is for illustrative purposes only.

19 Dickerson Street, Barmera

Elders

Real Estate