



210 SIXTEENTH Street, RENMARK, SA 5341

Solid Home with Good Shedding

Located close to Renmark's sporting facilities, this solid 4-bedroom home is set on a 950m² double allotment, with the convenience of rear lane access. The home boasts a generous lounge with a fan forced, slow combustion heater, along with a good-sized kitchen/dining area. Roller shutters have been installed on most windows and there is a ducted evaporative air-conditioning system.

Outside features excellent shedding and multiple carports, so undercover parking isn't an issue. One of the sheds incorporates a lined roomed, with a ceiling fan, possibly suitable as a man cave, play room or a craft room. Currently tenanted on a periodic lease for \$290 per week, so call now for your private inspection.

Disclaimer: We have in preparing this information used our best endeavours to ensure that the information contained herein is true and accurate but accept no responsibility and disclaim all liability in respect of any errors, omissions, inaccuracies, or misstatements that may occur. Prospective purchasers should make their own enquiries to verify the information contained herein. Elders Real Estate RLA62833

- Land Area 950.00 square metres
- Building Area: 149.00 square metres
- Bedrooms: 4

TYPE: Sold

INTERNET ID: 300P45993

SALE DETAILS

UNDER CONTRACT

CONTACT DETAILS

Elders Riverland

2 East Terrace

LOXTON, SA

8588 6066

RLA: 62833

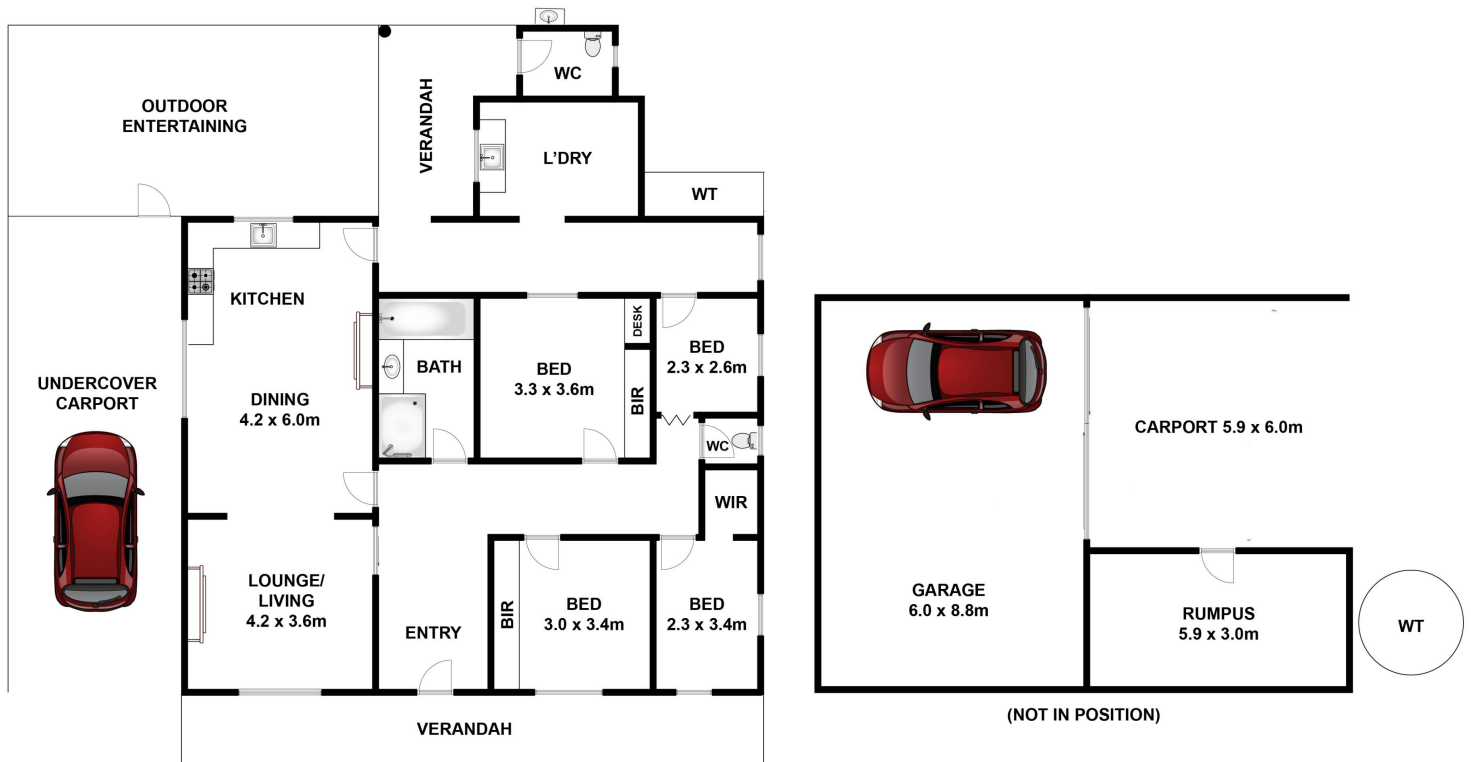
David Kanizay

0408 834 586

- Bathrooms: 1
- Car Parks: 4







Approx House Area 159m²

Whilst bwrn.com.au has made every attempt to ensure the accuracy of the floor plan contained here, measurements are approximate and no responsibility is taken for any error, omission, or mis-statement. This plan is for illustrative purposes only.

210 Sixteenth Street, Renmark

