



67 Hillman Street, SPENCER PARK, WA 6330

Large Family Home in Great Location With Town Views

Need space? This home has plenty. Located in the convenient and sought after Hillman Street in Spencer Park, this home is deceptively large and has very tidy street appeal.

Only a 5 minute drive to the centre of town and close to shops, restaurants and cafes, numerous schools, healthcare and the beautiful Albany beaches. Whether you have children to get to school, or work in the city centre, this home is perfect for families or those who want to live the town lifestyle.

The very solid brick and tile house is split into two roomy levels, the top floor consists of four bedrooms and a study, a spacious living area with reverse cycle, well maintained bathroom with bath, shower and separate toilet, and kitchen. The modern kitchen and dining is not only eye-catching with it's green glass splashback, but also practical with an island bench, plenty of storage and expansive views over the town and Mt Clarence. A big walk in pantry completes this space and will make home cooking a breeze.

The bottom level of the house is currently set up as a separate studio flat. Perfect for a teenager retreat, huge games room or second living area, it has a cosy tile fire, double bedroom, bathroom with shower and toilet, and a laundry that has been converted into a small kitchen. The connected double garage has extra space for storage and a reverse cycle air conditioner.

The particulars contained herein are supplied for information only and shall not be taken as a representation in any respect on the part of the vendor or its agent. Interested parties should contact the nominated person or office for full and current details.

TYPE: Sold

INTERNET ID: 300P4683

SALE DETAILS

Offers Above \$550,000

CONTACT DETAILS

Albany Real Estate
189 Chester Pass Road
ALBANY, WA
08 9842 7900

Chris Wallace
0437 152 471

The spacious and fully enclosed backyard has plenty of room to turn around with its side access and concrete driveway. Park your caravan, boat or trailer with ease. With grassed areas for playing, a well sized garden shed and a paved area ready to construct a bigger shed on or make into a patio area, there are endless possibilities for making the most of this backyard. Set up raised veggie beds for a bountiful home harvest or just let the children run free, knowing they have a safe place to play.

Things you'll love:

Large elevated block with views over town and Mt Clarence

Sought after neighbourhood close to town, schools and shops

10 solar panels and instant gas HWS

Large master bedroom with floor to ceiling built in robe

Five bedrooms plus a study

Modern kitchen with island bench, stone benchtops and big walk in pantry

Separate lounge with reverse cycle air conditioning

Large downstairs living area with bedroom, bathroom and converted kitchen

Huge double garage with room for storage and reverse cycle air conditioning

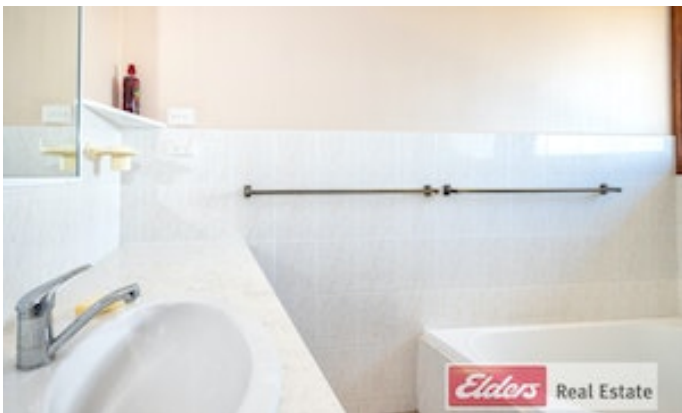
Big backyard fully enclosed and with paved area ready for shed

Perfect for the large or growing family, this home has everything you need to enjoy spacious and comfortable living right in town. Don't miss out on this one, organise your private viewing with Chris Wallace from Elders Real Estate on 0437 152 471.

Other features: Close to Schools, Close to Shops, Close to Transport

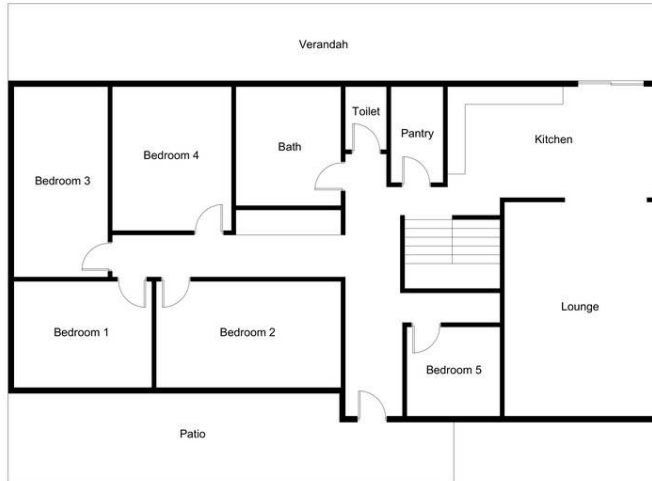
- Land Area 769.00 square metres
- Bedrooms: 5
- Bathrooms: 2
- Double garage



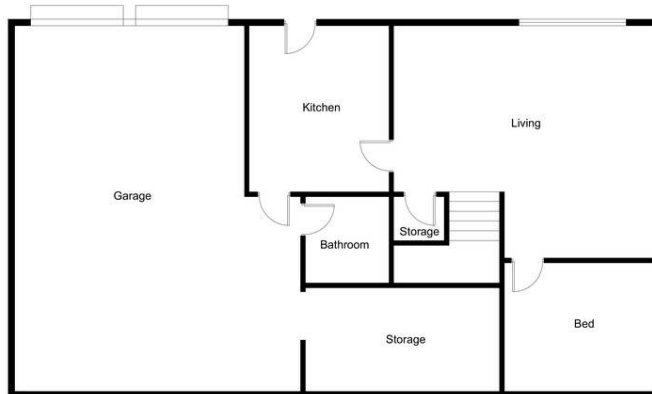








UPSTAIRS



DOWNSTAIRS

This floor plan including furniture, fixture measurements and dimensions are approximate and for illustrative purposes only. BoxBrownie.com gives no guarantee, warranty or representation as to the accuracy and layout. All enquiries must be directed to the agent, vendor or party representing this floor plan.

67 Hillman Street Spencer Park