



5 Wodonga Avenue, LOXTON, SA 5333

Sold by Raph Liddle Elders Loxton

RLA 62833

- Land Area 1,150.00 square metre
- Bedrooms: 2
- Bathrooms: 1
- Car Parks: 2
- Single garage

TYPE: Sold

INTERNET ID: 300P47709

SALE DETAILS

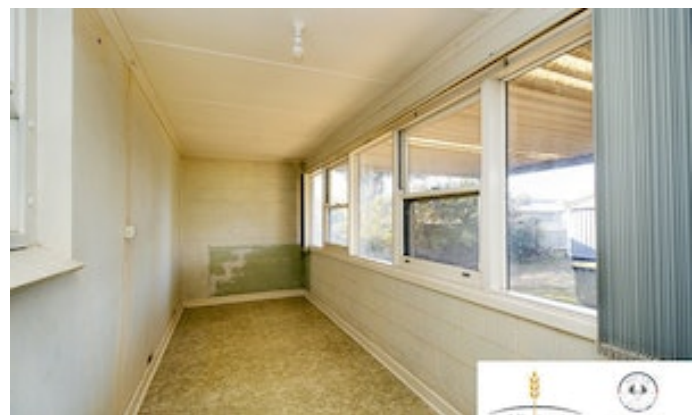
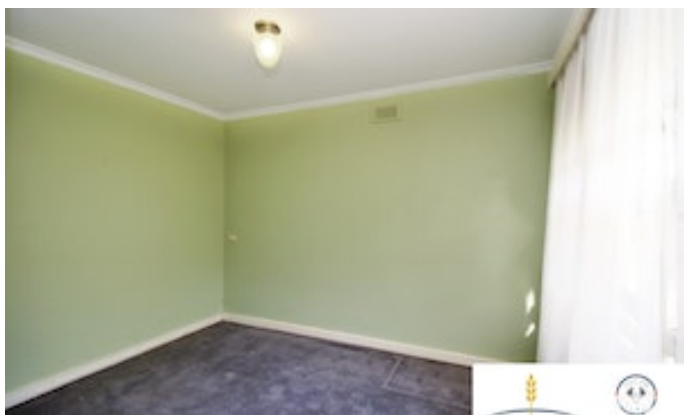
Under Contract

CONTACT DETAILS

Elders Riverland

2 East Terrace
LOXTON, SA
8588 6066
RLA: 62833

Raphael Liddle
0405 005 138





**FLOOR PLAN**

5 Wodonga Ave. Loxton

Elders Real Estate

Approx. Living Area:
102 sq.m.Plan & Colours for illustration purposes Only.
All measurements are approx.