



9290 Goyder Highway, STUART, SA 5320

Prime River front Holding

53.42 hectares, 132.00 acres

"Pindari Park" is being offered For Sale. This beautiful cliff top property offers river views with direct access. Some of the Many Features are: - * Scattered native trees * Salt-bush * Large garden with automatic watering system * New fencing on 3 sides of the property * Gravel roads & path-ways * Cottage features a sun-room with river views * Large windows and doors with safety glass * Spacious open plan dining /lounge with open fire place * Butler's pantry * Computer area * Outdoor kitchen on veranda * "Captain Cook" BBQ/gas * Electric stove * brick Pizza oven * Edwards solar hot water system on the roof * Approximately 6kW Solar system * "Carrier" air conditioner in Lounge * "Fujitsu" air conditioner in sun-room * Gutter guard on the back roof * Laundry and spare bathroom attached to car shed * Large Garage * Three rain water tanks at side of cottage * One rain water tank at back of car shed * Small rain water tank at side of veranda. * Two large holding tanks for river water * 500 KI Water licence * Pressure pump draws water from the River * Rain water used in house only * Irrigation system for 28 Fruit & 14 Olive trees * 500 tree Woodlot planted in 2000.

Disclaimer: In preparing this information we have used our best endeavours to ensure details contained herein are true and accurate, however we accept no responsibility and disclaim all liability in respect of any errors, omissions or inaccuracies. Prospective

TYPE: Sold

INTERNET ID: 300P47855

SALE DETAILS

740000

CONTACT DETAILS

Elders Riverland
2 East Terrace
LOXTON, SA
8588 6066
RLA: 62833

Wayne Kleemann
0417 000 988

purchasers should make their own enquiries to verify the information contained herein.
RLA62833

- Land Area 53.4185 hectares
- Bedrooms: 2
- Bathrooms: 1



HOMESTEAD

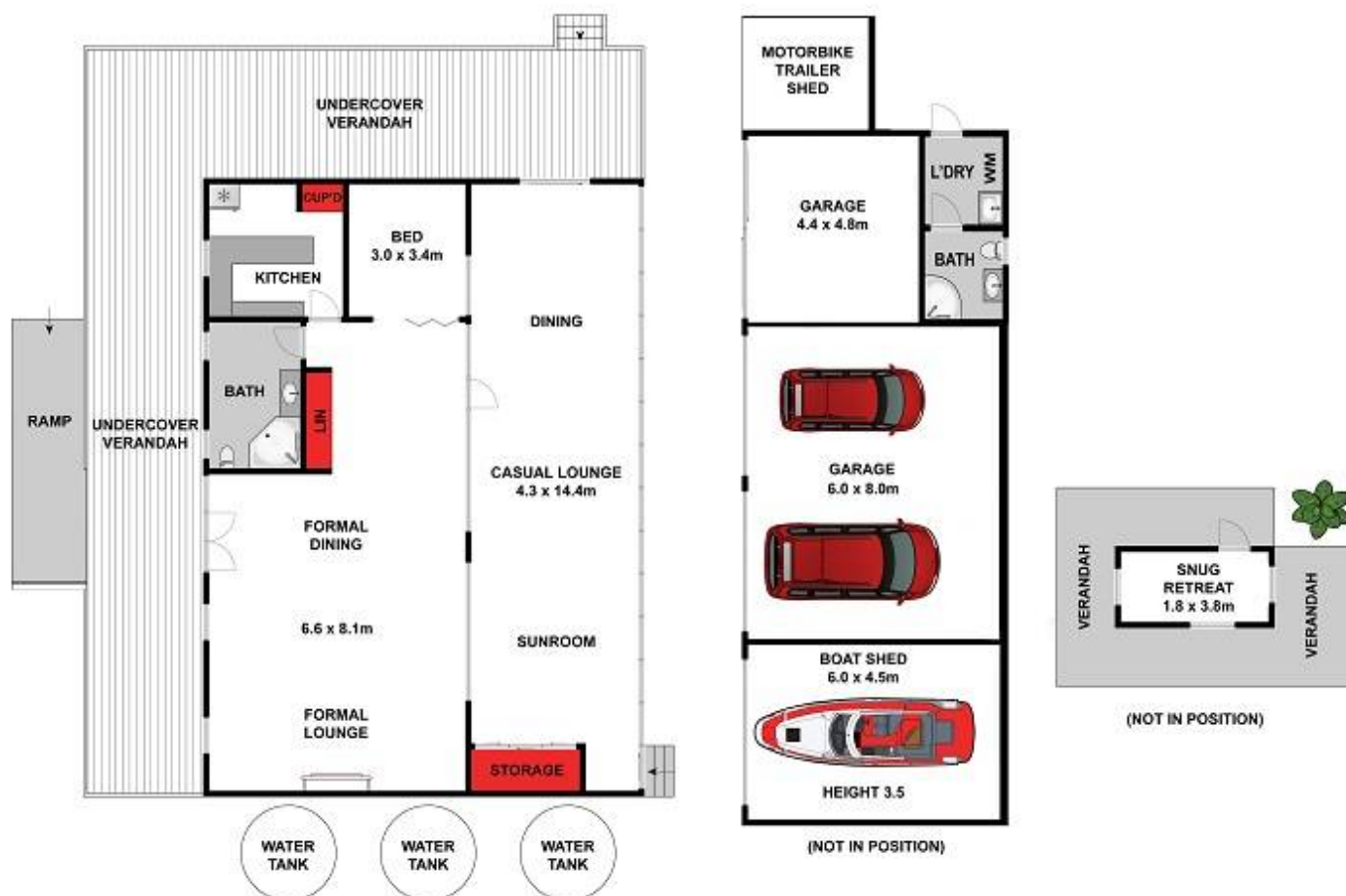
| | |
|------------------|---|
| Bedrooms | 2 |
| Bathrooms | 1 |











Approx House Area 177m²

Whilst bwrm.com.au has made every attempt to ensure the accuracy of the floor plan contained here, measurements are approximate and no responsibility is taken for any error, omission, or mis-statement. This plan is for illustrative purposes only.

9290 Goyder Highway, Stuart

Elders

Real Estate