



## 111 Paruna Road, LOXTON, SA 5333

Sold By Raph Liddle Elders Loxton

RLA 62833

Other features: Heating

- Land Area 1,006.00 square metre
- Bedrooms: 4
- Bathrooms: 1
- Car Parks: 2
- Double garage

**TYPE:** Sold

**INTERNET ID:** 300P50690

**SALE DETAILS**

**Under Contract**

**CONTACT DETAILS**

**Elders Riverland**

2 East Terrace

LOXTON, SA

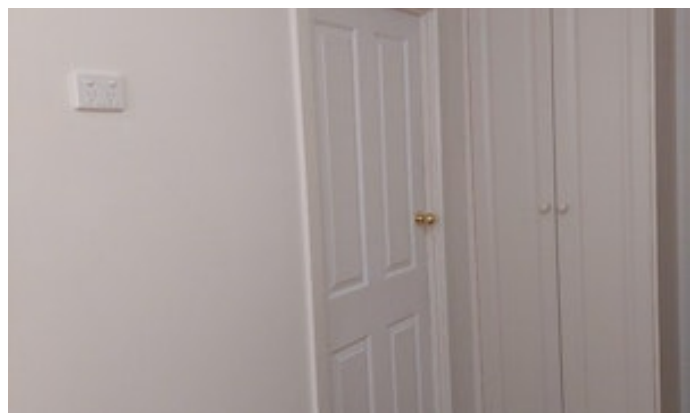
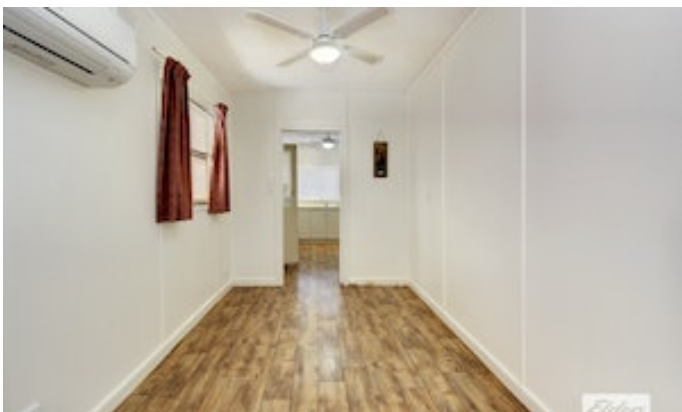
8588 6066

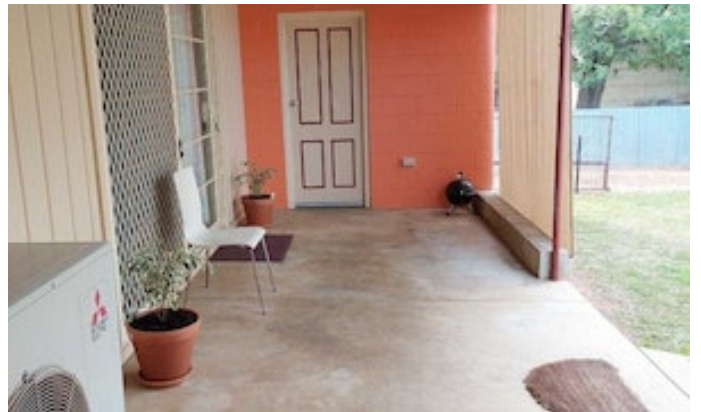
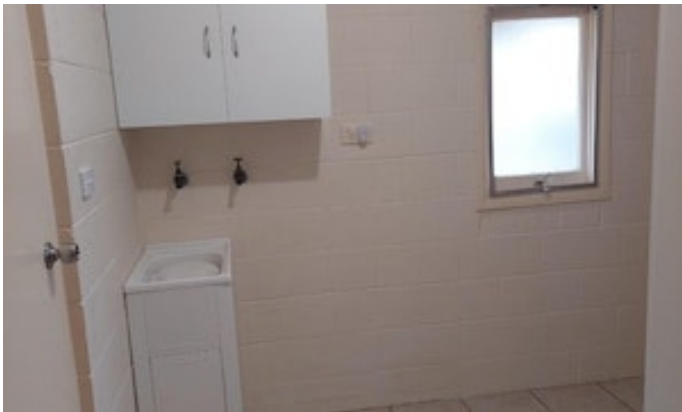
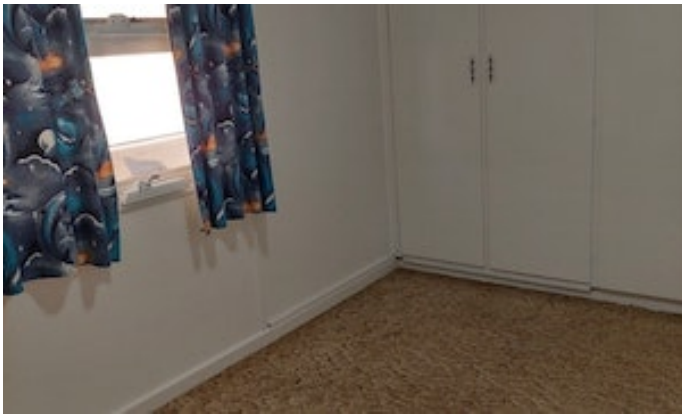
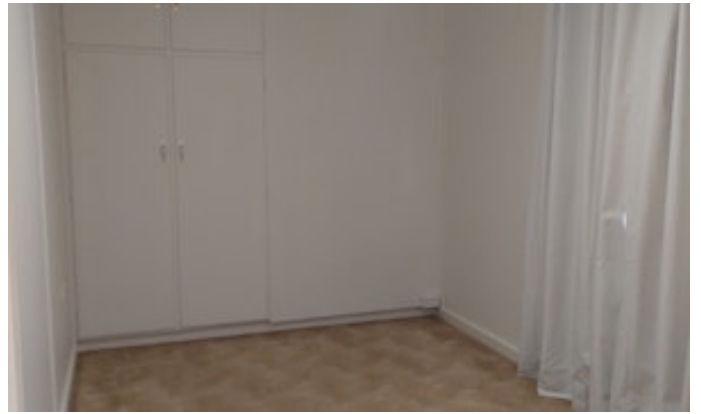
RLA: 62833

**Raphael Liddle**

0405 005 138











**FLOOR PLAN**

111 Paruna Rd. Loxton



Real Estate

Approx. Living Area:  
96 sq.m.

Plan & Colours for illustration purposes Only. All  
measurements are approx.