



1461 Boundary Road, BURDETT, SA 5253

Country Living with Room for Pets and "Toys"

• 4 Bedroom Systembuilt home on approx 74 acres

• Ensuite & walk-in robe to main

• Open plan kitchen/dining/living with slow combustion & split system air cond

• 3 Way bathroom

• 14m x 12m workshop, double garage & carport, sundry sheds

• Rainwater plumbed to house, no mains

• 23km to Murray Bridge & 97 to the Toll Gate

Other features: Heating

- Bedrooms: 4
- Bathrooms: 2
- Double garage

TYPE: Sold

INTERNET ID: 300P58032

SALE DETAILS

Offers Over \$415,000

CONTACT DETAILS

Murray Bridge

93 Railway Terrace

TAILEM BEND, SA

08 8572 8006

RLA: 62833

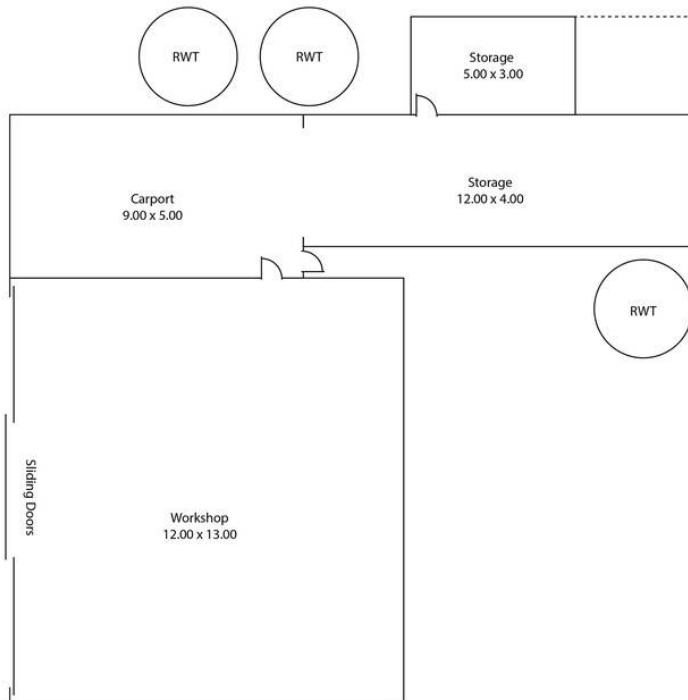
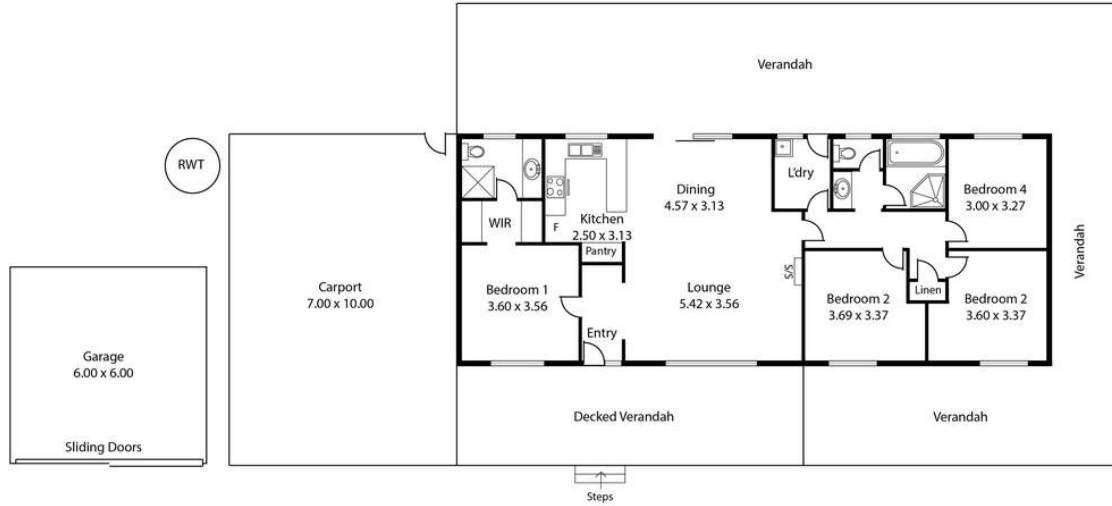
John Robinson

0409 609 457





1461 Boundary Road,
BURDETT



Living: 129.93 sqm
 Verandah: 159.75 sqm
 Carports: 115.00 sqm
 Garage: 36.00 sqm
 Workshop: 156.00 sqm
 Storage: 63.00 sqm
 Total: 659.68 sqm

This Drawing is for illustration purposes only.
 Not To Scale. All measurements are internal and approximate.
 Details intended to be relied upon should be independently verified.
 Produced by Open2view.com