



18/48 Sabine Road, MILLNER, NT 0810

PERFECT INVESTMENT OR FIRST HOME

Presenting the perfect opportunity to kick start your rental portfolio or get your foot in the door if you are a first home buyer with this well positioned upper-level unit that offers two oversized bedrooms and spacious open plan living with lovely palm tree and pool views in a peaceful and well-maintained complex which has been recently repainted externally for a fresh new look. Within close proximity to several local shopping centres and the Nightcliff foreshore, it's vacant and it's the perfect starter package.

Here's what we love about this home:

- Spacious open floor plan design encompassing the living, dining and kitchen in one large light filled space
- Upgraded kitchen which features plentiful overhead storage, cupboards and countertops
- Two extra-large bedrooms with full sized built-in robes
- Fully tiled main bathroom featuring a shower recess with extra deep base which can be filled with water for a mini bath and mirrored vanity

The particulars contained herein are supplied for information only and shall not be taken as a representation in any respect on the part of the vendor or its agent. Interested parties should contact the nominated person or office for full and current details.

TYPE: Sold

INTERNET ID: 300P64180

SALE DETAILS

SOLD

CONTACT DETAILS

leanyer

Shop 13B Hibiscus
Shopping Town 8 Leanyer
Drive Leanyer
DARWIN, NT
08 8995 7500

Derek Hart

0409 702 631

- Spacious private balcony off the living area via glass sliding doors with shady palm tree top and lap pool views
- Cool ceramic tiles
- Private external lockable laundry
- Allocated parking for residents

The complex is neat, tidy and well maintained. Surprisingly quiet and well positioned, central to major and local shopping centres, beaches, cafes, public transport and a 10-minute drive to the Darwin CBD. All this practicality and affordability bundled into a tidy little package which you could call home.

The current owner is willing to look at all offers as there is no set price. â##Make a Start with Team Derek Hartâ##.

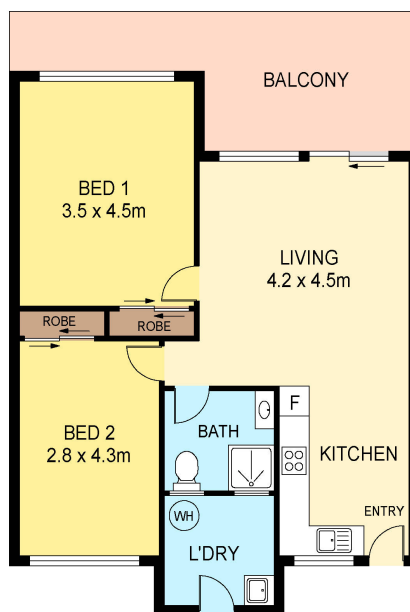
All offers submitted before 5 pm on 03/11/2023.

Other features: Close to Schools, Close to Shops, Close to Transport, Lift Installed, Pool

- Building Area: 10.00 square metres
- Bedrooms: 2
- Bathrooms: 1
- Car Parks: 1







Scale in metres. Indicative only. Dimensions are approximate. All information contained herein is gathered from sources we believe to be reliable. However we cannot guarantee its accuracy and interested persons should rely on their own enquiries.

18/48 Sabine Road, Millner