

66 Currawong Drive, HOWARD SPRINGS, NT 0835

FAMILY RESORT STYLE OASIS

Take advantage of this excellent opportunity for all the family to make the move onto a beautiful rural property located just 10 minutes to Palmerston and Coolalinga. This impressive, spacious three-bedroom home provides flawless interiors, space, privacy, and the peace needed for effortless family living. Nestled away from the street, this peaceful residence is ideal for an owner occupier or investor.

The living area welcomes you in and flows to the dining and the modern kitchen. Boasting three spacious bedrooms and a private ensuite off the master bedroom. If entertaining is your forte, then you will enjoy the swimming pool with a resort styled bar and outdoor entertainment area with a BBQ area. There is a granny flat for accommodating guests along with a gym area. Smart, sophisticated, and contemporary make this home impossible to surpass.

The dining area adjoins a fully equipped modern U-shape kitchen with dual sinks, ample storage and bench space, breakfast bar, and overhead storage cabinets. To provide extra comfort, there is air conditioning and ceiling fans throughout which easily cools the entire house during Darwin's humid climate.

Spacious master bedroom with sliding door access to a private undercover courtyard

The particulars contained herein are supplied for information only and shall not be taken as a representation in any respect on the part of the vendor or its agent. Interested parties should contact the nominated person or office for full and current details.

TYPE: Sold

INTERNET ID: 300P67701

SALE DETAILS

SOLD

CONTACT DETAILS

Palmerston

4/11 Palmerston Cct
Palmerston, NT
08 8931 5000

Rayna Kirikino

0400 456 484

and outdoor shower - perfect for relaxing after a long day. Walk-through wardrobe leads into the spectacular ensuite featuring large, mirrored vanity, a separate shower and toilet.

There are two additional generous sized bedrooms each with air conditioning and ceiling fans and sliding door access to the outdoor verandah, one includes a built-in wardrobe,. The main bathroom boasts an impressive low set bath, large shower with sliding glass screen, a wooden vanity with ample storage space and a separate toilet. Gorgeous tiling compliments this bathroom, while the stylish lighting completes the space.

Overlooking the surrounding bushland and pool, the enormous entertainer's deck is perfectly designed for entertaining your family and guests. On one side there is a large inground pool and shade cloth with a resort style bar and timber decking fully fenced. A BBQ area along with plenty of undercover verandah for entertaining and unwinding at the end of the week and additional parking space for two vehicles. As a bonus you will find there is plenty of grassed area for the kids or pets to enjoy. On the other side you will find an undercover verandah with sliding door access to the house and external laundry.

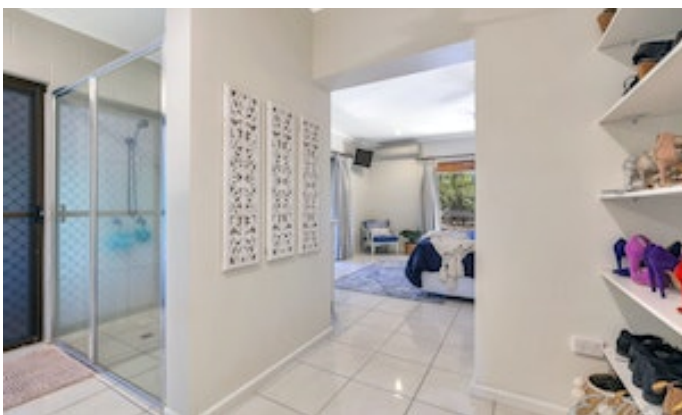
In addition to the already amazing features of this property there is a large demountable/granny flat measuring approximately 15m x 8m. It has been converted into a liveable space featuring a large kitchen, lounge area, bedroom with built in robe, and bathroom. A small private deck via sliding door access, provides the opportunity to pause and take in the serenity of the environment.

Next up is the shed measuring approx. 6m x 12m with multiple sliding door access and an extra area set up for a home styled gym. With ceiling fans throughout, it is perfect to use for any kind of lifestyle, workshop or as an additional retreat for teenagers.

Beyond the granny flat and shed you will discover an arrangement of features. Including a smaller shed perfect for storing gardening equipment, an external laundry for convenience, and two small shower rooms with toilet to accommodate the larger family lifestyle.

The manageable-sized block of land provides generous parking for four or more vehicles with room for a boat, caravan, trailers, or a new shed if desired. If the country lifestyle is what you are after but still close enough to amenities for your family and friends, this is one you have been waiting for. With plenty of natural light throughout, it is a modern sanctuary that will be a joy to return home to. This place is not one to be missed.

- Land Area 8,320.00 square metres
- Building Area: 210.00 square metres
- Bedrooms: 4
- Bathrooms: 5
- 4 car carport











0 1 2 3 4 5
 Scale in meters. Indicative only. Dimensions are approximate. All information contained herein is gathered from sources we believe to be reliable. However we cannot guarantee its accuracy and interested persons should rely on their own enquiries

66 Currawong Dr, Howard Springs