



3 Needwood Drive, NARACOORTE, SA 5271

First Home Or Invest At Affordable Price Point

First home buyers and investors will love this neat and tidy three bedroom timber frame home in an affordable price bracket.

Situated on a large allotment of 1,011m² only a short walk from the town centre, there is a lot to like about this home. Just a few updates such as a lick of paint would help to maximise its potential.

The property has been in the same family for 55 years, and is now ready for new owners to take over and put their own stamp on it.

Three bedrooms are all of good size, main with built-ins. A large kitchen/dining space with split system air conditioning and heating flows into a comfortable lounge room with ceiling fan.

The tiled bathroom has shower, bath and vanity. The toilet is separate. Laundry with concrete floor has concrete wash trough. Approximately 5,000 litres of rainwater is plumbed to the home for drinking water.

TYPE: Sold

INTERNET ID: 300P69041

SALE DETAILS

\$210,000

CONTACT DETAILS

Naracoorte

Shop 5/26 Robertson Street

Naracoorte, SA

08 8762 7900

RLA: 62833

Lee Curnow

0427 620 864

At the rear is a covered outdoor entertaining area. The large, fully fenced back yard features a good size garage with power and concrete floor. There are also two smaller open-sided sheds for storage and wood, with ample space for a veggie garden.

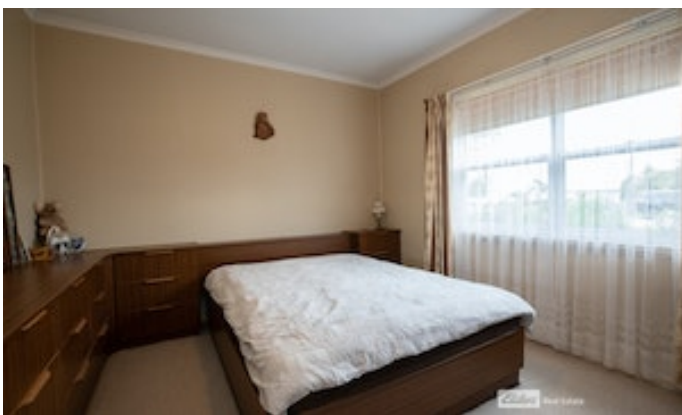
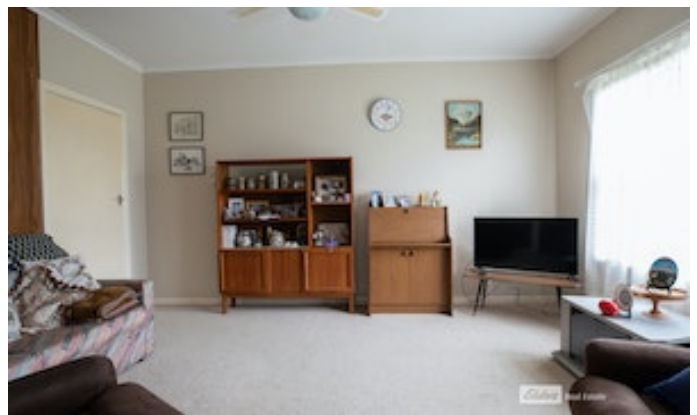
A double carport is located next to the house also providing vehicle access to the back yard.

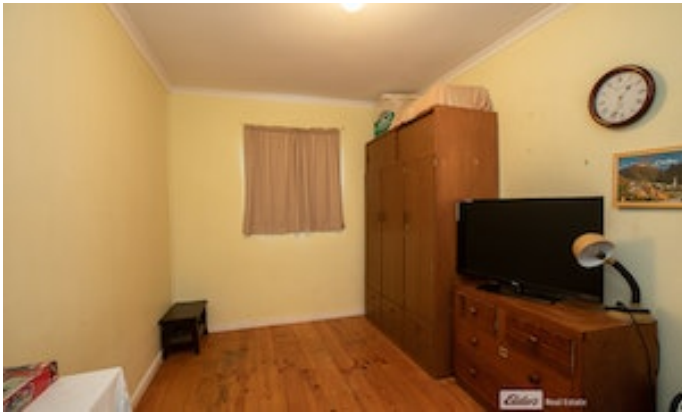
Properties in this price range, with little work to do, are rare in the current market. This one is vacant and available to move into immediately after sale.

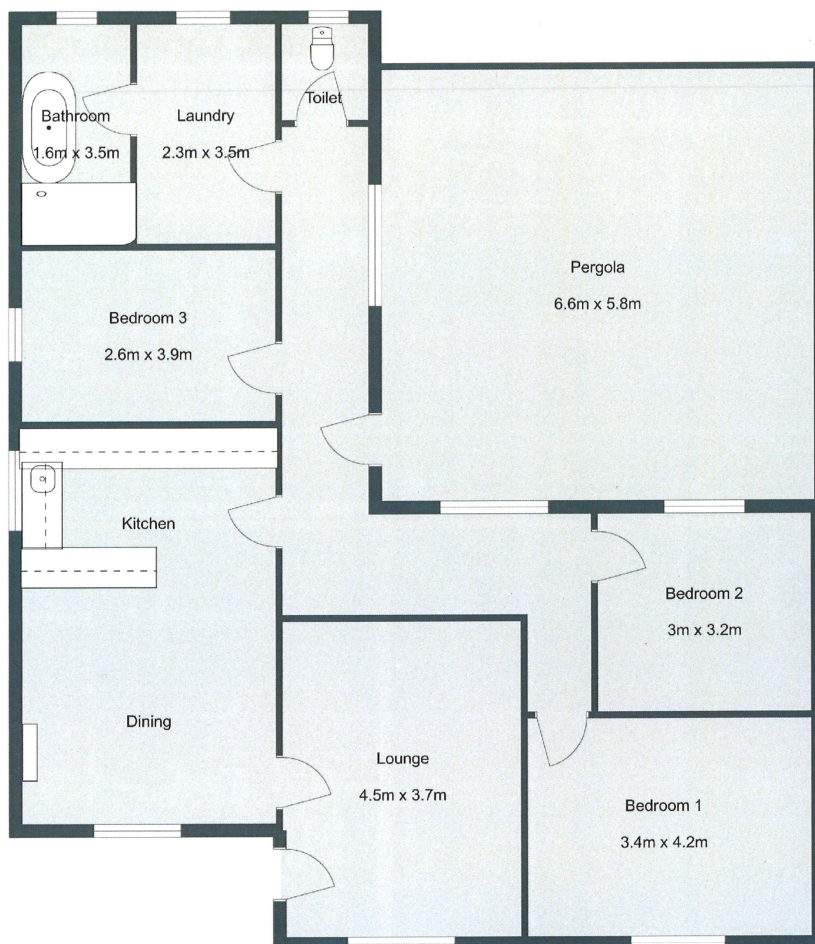
First home buyers and investors - be quick to book an inspection with Lee on 0427 620 864!

Disclaimer: We have in preparing this information used our best endeavours to ensure that the information contained herein is true and accurate, but accept no responsibility and disclaim all liability in respect of any errors, omissions, inaccuracies or misstatements that may occur. Prospective purchasers should make their own enquiries to verify the information contained herein. RLA62833

- Land Area 1,011.00 square metre
- Bedrooms: 3
- Bathrooms: 1
- Double carport







THIS FLOOR PLAN IS FOR ILLUSTRATION PURPOSES ONLY