



2 Dolphin Avenue, ENCOUNTER BAY, SA 5211

POSITION – PRICE – POTENTIAL

Price Guide \$560,000

2 Dolphin Avenue, Encounter Bay. â## This is a delightful home, built in 1993, in a great position for

whatever you desire. A flat corner allotment of 691sqm, close to schools, local amenities. A short

drive into the centre of town or the seafront.

This property presents like a new home, immaculately maintained and cared for, not a thing to do

other than to put your stamp on it.

Comprising of a large, spacious lounge and semi formal dining area. Square kitchen with plenty of

bench and cupboard space and with a second, casual dining area adjoining.

Master bedroom with ensuite bathroom and large built-in robe. Split system air

The particulars contained herein are supplied for information only and shall not be taken as a representation in any respect on the part of the vendor or its agent. Interested parties should contact the nominated person or office for full and current details.

TYPE: Sold

INTERNET ID: 300P69583

SALE DETAILS

\$560,000

CONTACT DETAILS

Elders Victor Harbor
11-13 Victoria Street
VICTOR HARBOR, SA
08 8555 9000
RLA: 62833

Bill Harvey
0417 820 311

conditioner.

Bedrooms 2 & 3 are well sized and 3 has BIR.

The main bathroom has all separate components and is very family friendly. Large separate laundry

with outside access.

Single garage (currently used as an office), would also make a great games room. Double carport

and double shed / workshop / garage.

Some additional features include, ducted reverse cycle air-conditioning, 3 x split system, reverse

cycle air-conditioners. Insulation, Lots of space for a caravan, boat or work vehicles.

This area is always in demand and this home is bound to be a popular, would be ideal for first home

owners, investors, retirees or even a holiday getaway so do not delay, make an appt or call into an

open and judge for yourself what fantastic value this property is.

Disclaimer: We have in preparing this information used our best endeavours to ensure that the information contained herein is true and accurate, but accept no responsibility and disclaim all liability in respect of any errors, omissions, inaccuracies or misstatements that may occur. Prospective purchasers should make their own enquiries to verify the information contained herein. RLA 62833

Other features: Carpeted, Close to Schools, Security System

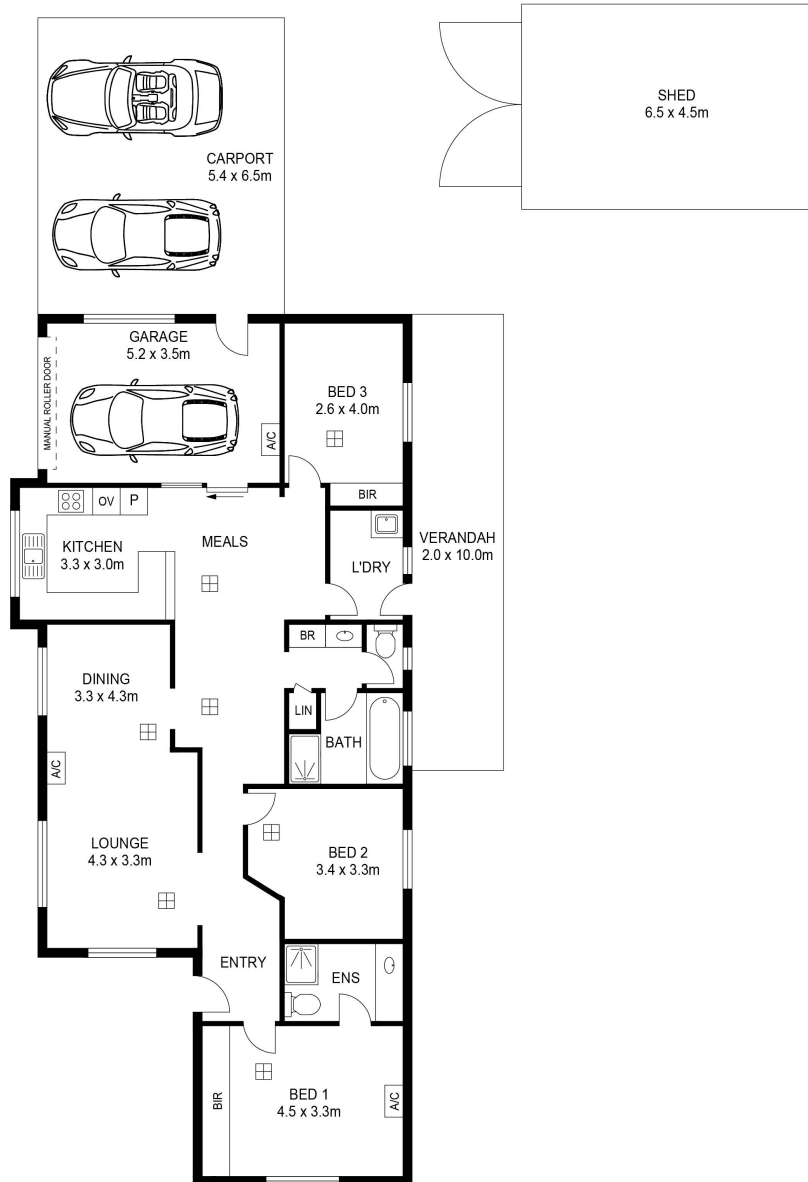
- Land Area 691.00 square metres
- Building Area: 135.00 square metres
- Bedrooms: 3
- Bathrooms: 2
- Car Parks: 4
- Ensuite











This drawing is for display purpose only.
All measurements are approximate and information
intended to be relied upon should be independently verified.
Created by www.angelagilesphotography.com