



33 Wodonga Avenue, LOXTON, SA 5333

Available Now! Picture Perfect

Picture perfect inside and out! This very well cared for home holds an abundance of street appeal with established gardens & lush green lawn.

Inside you are immediately impressed by the polished timber floors, light filled rooms with natural colour tones.

The lounge is a comfortable space and leads you into the dining/kitchen areas. The upgraded kitchen provides a functional design, gas cooktop, storage options, dishwasher & rainwater.

The sleeping zones consist of 3 bedrooms with bedroom 1 featuring built in robes & ceiling fan while bedroom 2 also includes ceiling fan.

There's a large outdoor entertaining area which overlooks the beautiful gardens & surrounds. The rear yard has been cleverly sectioned off into two areas allowing an immediate area for entertaining and security for pets then the second section allows an abundance of space to store vehicles, boats, caravans or if you are seeking space to build a larger shed. The storage shed provides immediate space to house your tools.

The particulars contained herein are supplied for information only and shall not be taken as a representation in any respect on the part of the vendor or its agent. Interested parties should contact the nominated person or office for full and current details.

TYPE: Sold

INTERNET ID: 300P70178

SALE DETAILS

Under Contract

CONTACT DETAILS

Elders Riverland

2 East Terrace

LOXTON, SA

8588 6066

RLA: 62833

Raphael Liddle

0405 005 138

Located in a very well-established residential area of Loxton and being just a short stroll to Loxton's CBD, local schools and more.

Property Particulars:

3 bedrooms

Land Size 1,011m²

Date Built 1953

Council Rates \$1,890 p/a approximately

Timber floors

Rainwater storage

Upgraded kitchen

Gas heating

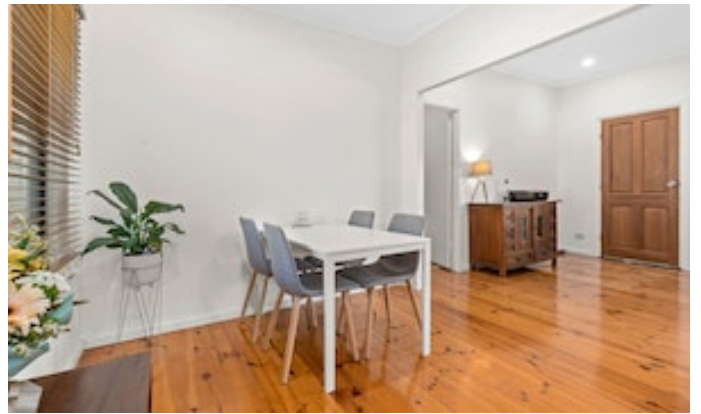
Ducted evaporative air-conditioning

Ceiling fans bedrooms 1, 2 & lounge

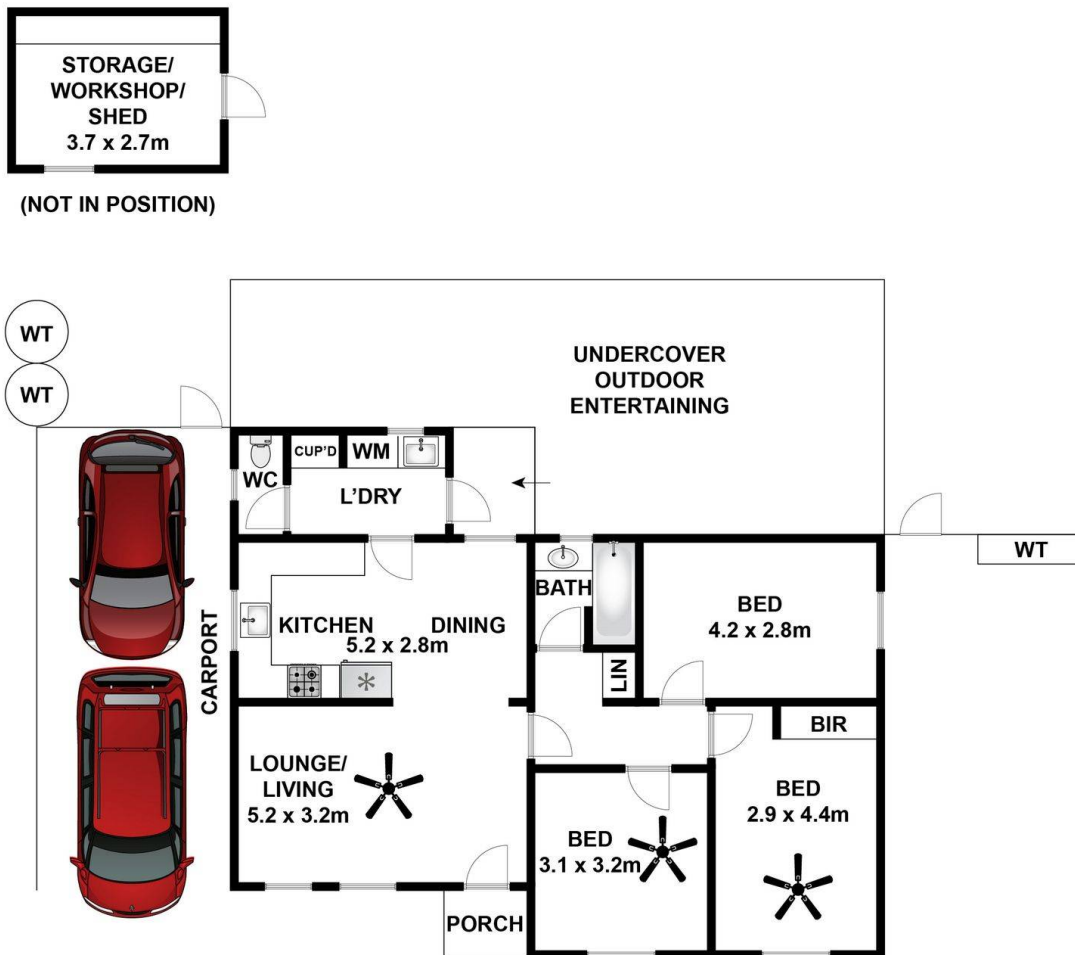
Rear lane access

Disclaimer: In preparing this information we have used our best endeavours to ensure details contained herein are true and accurate, however we accept no responsibility and disclaim all liability in respect of any errors, omissions or inaccuracies. Prospective purchasers should make their own enquiries to verify the information contained herein.
RLA62833

- Land Area 1,011.00 square metre
- Bedrooms: 3
- Bathrooms: 1
- Car Parks: 4
- Single carport







Approx House Area 88m²

Whilst bwrn.com.au has made every attempt to ensure the accuracy of the floor plan contained here, measurements are approximate and no responsibility is taken for any error, omission, or mis-statement. This plan is for illustrative purposes only.

33 Wodonga Avenue, Loxton

