



3 Driver Close, ATHERTON, QLD 4883

Now complete and ready for inspection

Golf View Estate is one of the newest subdivisions in Atherton. Not only surrounded by mountain ranges and a stones throw from the Junior Football fields, you can quite literally walk across the road and on to the fairway. This subdivision is ideally located within a picturesque and peaceful part of town and yet you are only minutes from Schools, Cafes, Supermarkets and the main street of Atherton.

3 Driver Close, provides an exciting opportunity to secure a brand new quality built home. With the building boom showing no signs of slowing down this is the perfect opportunity to have the luxury of a new home without the wait!

Built by one of the most highly regarded Builders on the Tablelands and the quality is exceptional. Cleverly designed this home offers a lot of bang for your buck with Open plan living, 4 Bedrooms, Study, 2 bathrooms and plenty of storage. The style of this home is classic with its neutral colour palette and subtle additions of texture and timber, it is sure to impress. Features of this executive home include the following:

Open Plan Living/Kitchen/Dining - vinyl plank flooring, fans, reverse cycle air-conditioning, generous in size and flows directly onto the patio making entertaining a breeze.

The particulars contained herein are supplied for information only and shall not be taken as a representation in any respect on the part of the vendor or its agent. Interested parties should contact the nominated person or office for full and current details.

TYPE: Sold

INTERNET ID: 30P0652

SALE DETAILS

CONTACT AGENT

CONTACT DETAILS

Malanda

21 James Street, Malanda
Malanda, QLD
07 4096 5666

Michelle Raso

0428 116 136

Kitchen - Modern in style with stone benchtops, soft close drawers, Smeg cooktop and oven and Asko dishwasher, generous size walk in pantry which will be fully fitted with custom built cabinetry including a benchtop for your appliances and ample shelving.

4 bedrooms - 3 with built-ins, mirrored doors, vinyl plank flooring and fans.

Master Bedroom - vinyl plank flooring, fan, reverse cycle air-conditioning, tv outlet, his and hers walk in robe and an en-suite which is tiled to the ceiling, double basin wall mounted vanity and both rain and hand held shower heads.

Study with a built in desk.

Storage - There is both a walk in linen cupboard, for your larger household items and also a 2nd linen cupboard which is conveniently located near the main bathroom.

Laundry - stone benchtops to match the kitchen with cupboards below. The laundry offers direct access to the outside.

Main Bathroom - Tiled to the ceiling throughout, bathtub, separate shower and wall mounted vanity. The toilet is also separate.

Double Garage - with timber look remote panel lift door.

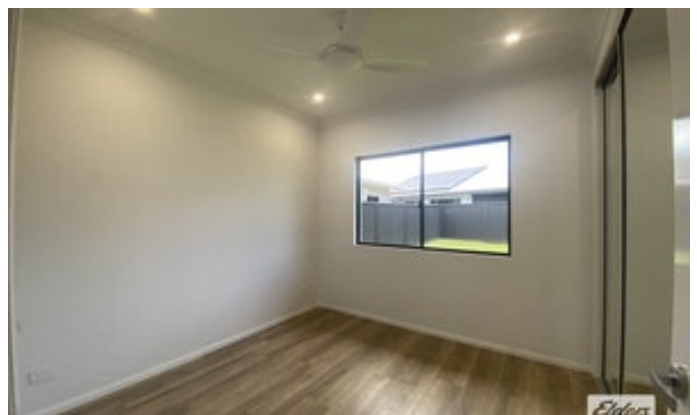
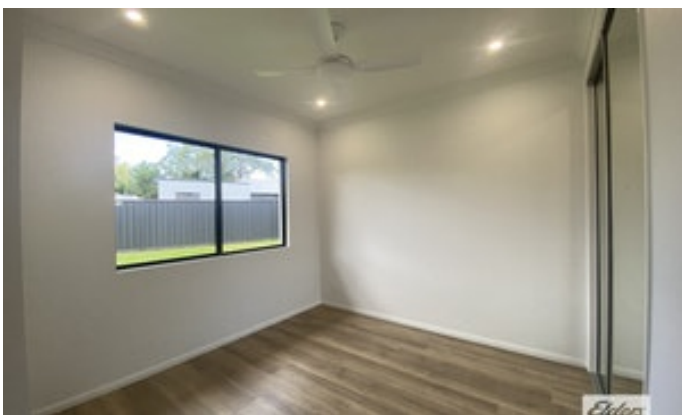
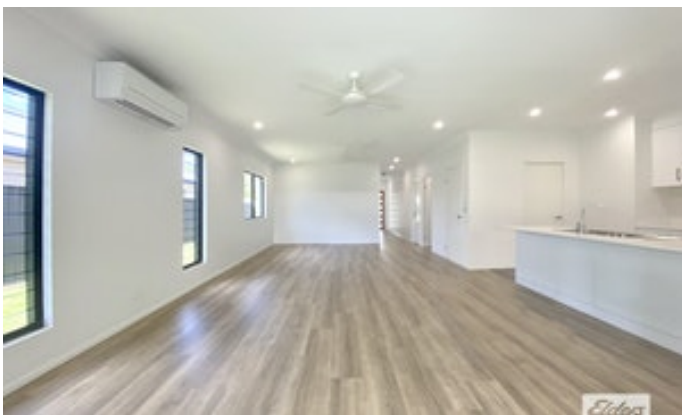
Outdoor Living Area - The patio which is fully tiled, with a ceiling fan and tv outlet.

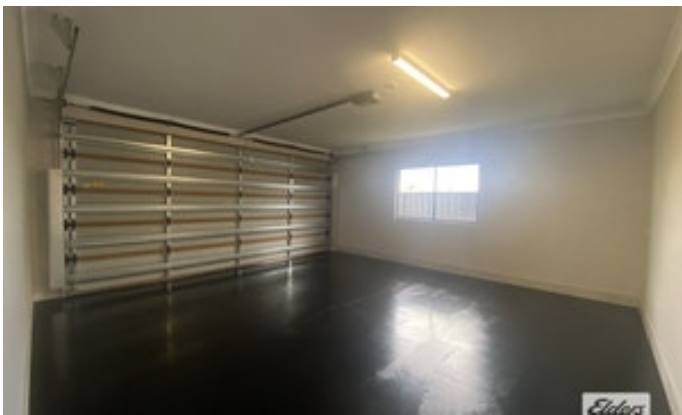
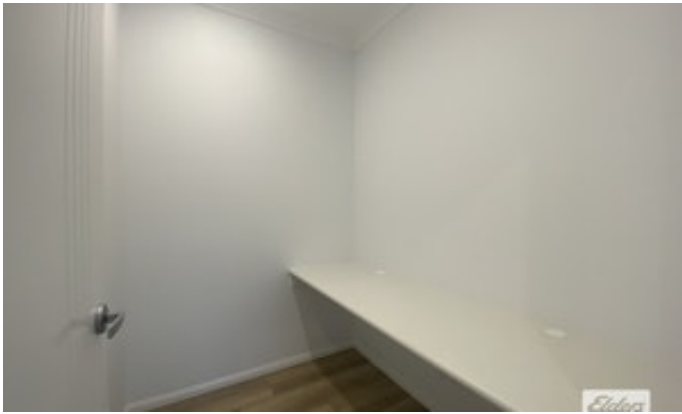
Outside the features continue with black Oxide driveway and pathways around the perimeter of the home, letter box, washing line and fully fenced around 3 sides.

The block is low maintenance at 537m² and is fully turfed, the home also offers side access wide enough to access the backyard or park your golf buggy or caravan.

There are a few finishing touches to complete this beautiful home which is priced at \$520,000. Attend our Open home this Saturday or arrange a private viewing by contacting Elders Listed Agent Michelle Raso on 0428 116 136 or email michelle.raso@eldersrealestate.com.au.

- Bedrooms: 4
- Bathrooms: 2
- Double garage
- Air Conditioning









FLOOR PLAN